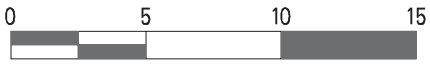
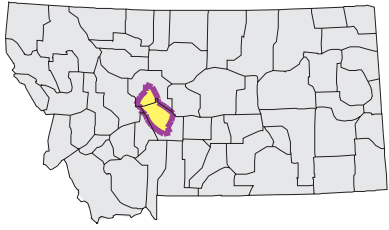
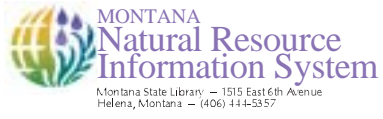


SMITH Watershed

National Land Cover Database



Mapscale 1: 450000 Scale in miles:



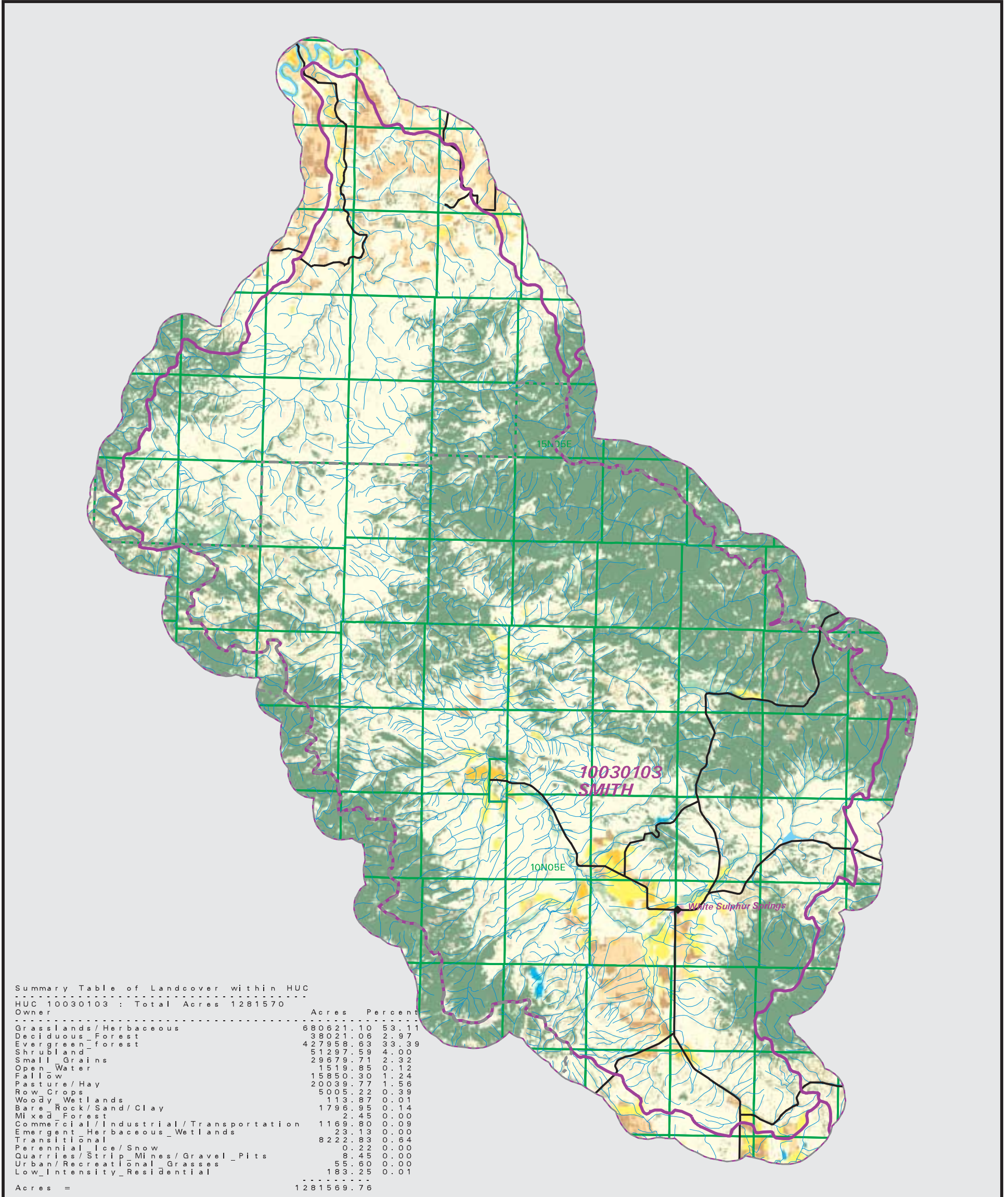
Date created: November 01, 2003

Map Request: 04MSL0001 - 10030103 - NLCD

- County Border
- Highway
- Public Land Survey System Townships
- Fourth Code Watersheds
- Open Water
- Perennial Ice/Snow
- Low Intensity Residential
- High Intensity Residential
- Commercial/Industrial Transportation
- Bare Rock/Sand/Clay
- Quarries/Strip Mines Gravel Pits
- Transitional
- Deciduous Forest
- Evergreen Forest
- Mixed Forest
- Shrubland
- Grasslands/Herbaceous
- Pasture/Hay
- Row Crops
- Small Grains
- Fallow
- Urban/Recreational Grasses
- Woody Wetlands
- Emergent Herbaceous Wetlands

SOURCE:
US Geological Survey NLCD files.
Data from 30-meter Landsat thematic mapper (TM), 1986-1995.
This data is intended to display land use patterns, rather than identification of the land use at any particular point.
The source data being in raster format, no attempt has been made to summarize the types or limit the legend to the displayed data.

This map is to be used as a primary reference source and is not intended for use in site - specific planning. This is public information and may be interpreted by organizations, agencies, units of government, or others, based on needs; however, they are responsible for the appropriate application. Federal, State, or local regulatory bodies are not to reassign to the Natural Resource Information System any authority for the decisions they make.



Summary Table of Landcover within HUC		
HUC 10030103 : Total Acres 1281570		
Owner	Acres	Percent
Grasslands/Herbaceous	680621.10	53.11
Deciduous_Forest	38021.06	2.97
Evergreen_forest	427958.63	33.39
Shrubland	51297.59	4.00
Small_Grains	29679.71	2.32
Open_Water	1519.85	0.12
Fallow	15850.30	1.24
Pasture/Hay	20039.77	1.56
Row_Crops	5005.22	0.39
Woody_Wetlands	113.87	0.01
Bare_Rock/Sand/Clay	1796.95	0.14
Mixed_Forest	2.45	0.00
Commercial/Industrial/Transportation	1169.80	0.09
Emergent_Herbaceous_Wetlands	23.13	0.00
Transitional	8222.83	0.64
Perennial_Ice/Snow	0.22	0.00
Quarries/Strip_Mines/Gravel_Pits	8.45	0.00
Urban/Recreational_Grasses	55.60	0.00
Low_Intensity_Residential	183.25	0.01
Acres =	1281569.76	