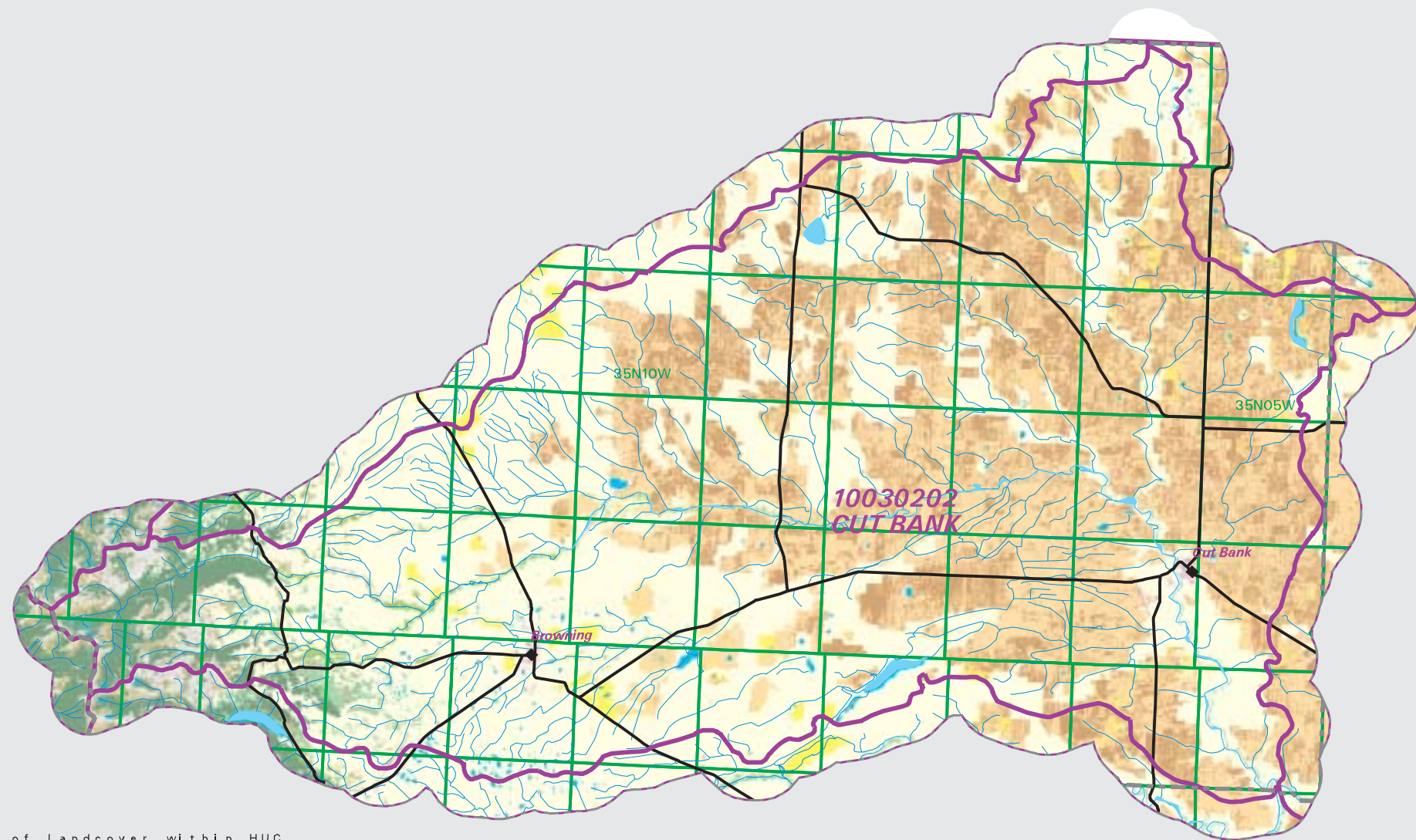


# CUT BANK Watershed

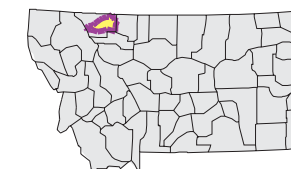
## National Land Cover Database

- County Border
- Highway
- Public Land Survey System Townships
- Fourth Code Watersheds
- Open Water
- Perennial Ice/Snow
- Low Intensity Residential
- High Intensity Residential
- Commercial/Industrial Transportation
- Bare Rock/Sand/Clay
- Deciduous Forest
- Evergreen Forest
- Mixed Forest
- Shrubland
- Grasslands/Herbaceous
- Pasture/Hay
- Row Crops
- Small Grains
- Fallow
- Urban/Recreational Grasses
- Woody Wetlands
- Emergent Herbaceous Wetlands



SOURCE:  
 US Geological Survey NLCD files.  
 Data from 30-meter Landsat thematic mapper (TM), 1986-1995.  
 This data is intended to display land use patterns, rather than identification of the land use at any particular point.  
 The source data being in raster format, no attempt has been made to summarize the types or limit the legend to the displayed data.

This map is to be used as a primary reference source and is not intended for use in site - specific planning. This is public information and may be interpreted by organizations, agencies, units of government, or others, based on needs; however, they are responsible for the appropriate application. Federal, State, or local regulatory bodies are not to reassign to the Natural Resource Information System any authority for the decisions they make.



Mapscale 1: 450000, Scale in miles:



Montana State Library - 1515 East 6th Avenue  
 Helena, Montana - (406) 444-5357

Date created: November 01, 2003

Map Request: 04MSL0001 - 10030202 - NLCD

Summary Table of Landcover within HUC

HUC 10030202 : Total Acres 770458

Owner	Acres	Percent
Grasslands/Herbaceous	348713.14	45.26
Small Grains	220578.56	28.63
Pasture/Hay	13852.53	1.80
Fallow	134898.05	17.51
Open Water	6230.39	0.81
Emergent Herbaceous Wetlands	1465.58	0.19
Woody Wetlands	5708.43	0.74
Evergreen forest	17691.51	2.30
Commercial/Industrial/Transportation	633.60	0.08
Row Crops	98.97	0.01
Bare Rock/Sand/Clay	6439.22	0.84
Deciduous Forest	5709.54	0.74
Shrubland	7655.50	0.99
Low Intensity Residential	332.48	0.04
Mixed Forest	231.74	0.03
Urban/Recreational Grasses	175.91	0.02
High Intensity Residential	6.45	0.00
Perennial Ice/Snow	36.25	0.00
Acres =	770457.86	