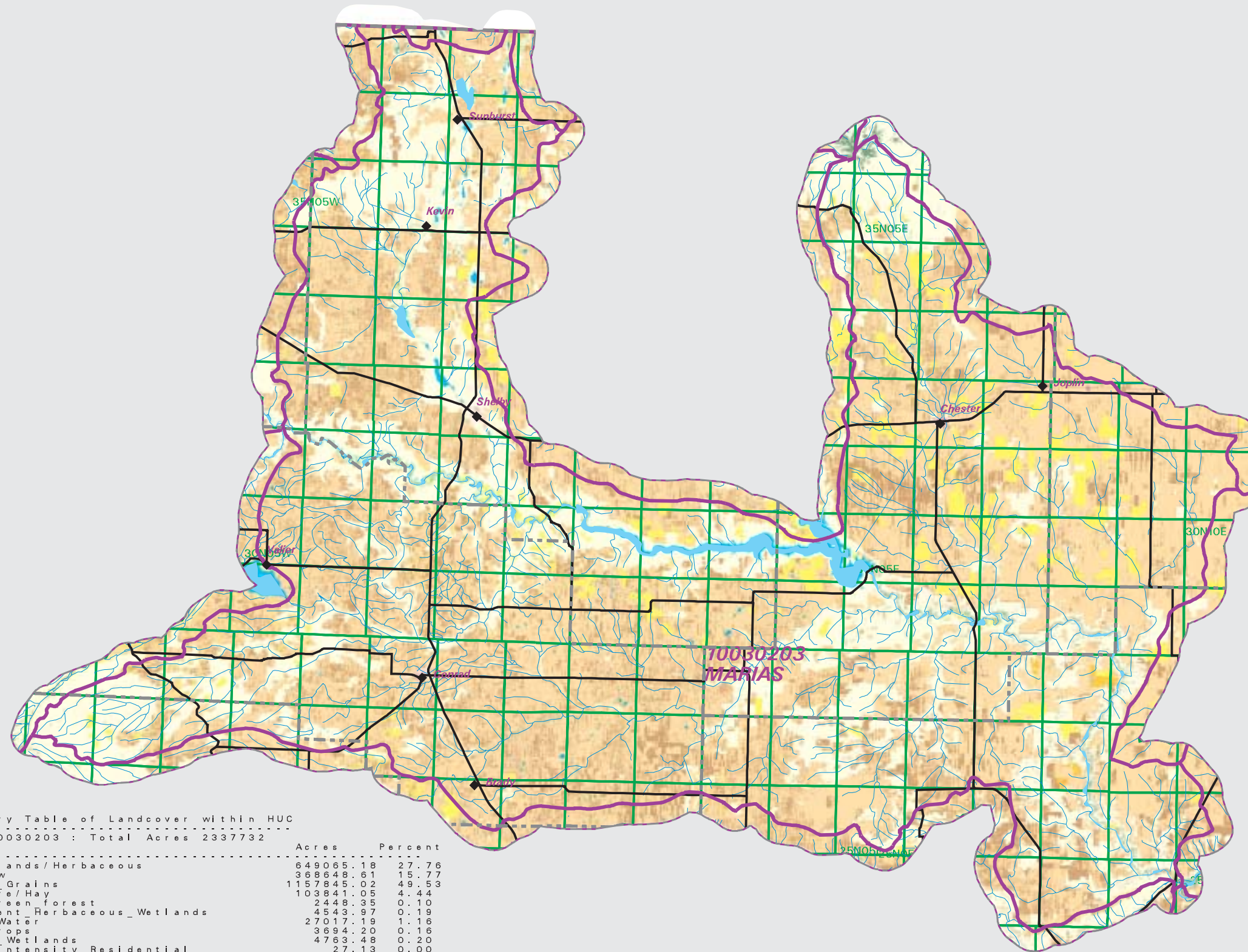


MARIAS Watershed

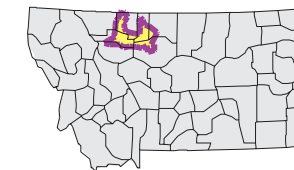
National Land Cover Database



- County Border
- Highway
- Public Land Survey System Townships
- Fourth Code Watersheds
- Open Water
- Perennial Ice/Snow
- Low Intensity Residential
- High Intensity Residential
- Commercial/Industrial Transportation
- Bare Rock/Sand/Clay
- Quarries/Strip Mines Gravel Pits
- Deciduous Forest
- Evergreen Forest
- Mixed Forest
- Shrubland
- Grasslands/Herbaceous
- Pasture/Hay
- Row Crops
- Small Grains
- Fallow
- Urban/Recreational Grasses
- Woody Wetlands
- Emergent Herbaceous Wetlands

SOURCE:
 US Geological Survey NLCD files.
 Data from 30-meter Landsat thematic mapper (TM), 1986-1995.
 This data is intended to display land use patterns, rather than identification of the land use at any particular point.
 The source data being in raster format, no attempt has been made to summarize the types or limit the legend to the displayed data.

This map is to be used as a primary reference source and is not intended for use in site - specific planning. This is public information and may be interpreted by organizations, agencies, units of government, or others, based on needs; however, they are responsible for the appropriate application. Federal, State, or local regulatory bodies are not to reassign to the Natural Resource Information System any authority for the decisions they make.



Mapscale 1: 650000, Scale in miles:



Montana State Library - 1515 East 6th Avenue
 Helena, Montana - (406) 444-5357

Date created: October 30, 2003

Map Request: 04MSL0001 - 10030203 - NLCD

Summary Table of Landcover within HUC
 HUC 10030203 : Total Acres 2337732

Owner	Acres	Percent
Grasslands/Herbaceous	649065.19	27.76
Fallow	38848.61	15.77
Small Grains	1157845.02	49.53
Pasture/Hay	103841.05	4.44
Evergreen forest	2448.35	0.10
Emergent_Herbaceous_Wetlands	4543.97	0.19
Open Water	27017.19	1.16
Row Crops	3694.20	0.16
Woody Wetlands	4763.48	0.20
High_Intensity_Residential	27.13	0.00
Commercial/Industrial/Transportation	2524.18	0.11
Urban/Recreational Grasses	180.36	0.01
Low Intensity Residential	907.82	0.04
Deciduous Forest	518.18	0.02
Shrubland	11175.79	0.48
Bare Rock/Sand/Clay	513.06	0.02
Mixed Forest	0.44	0.00
Perennial Ice/Snow	3.11	0.00
Quarries/Strip Mines/Gravel Pits	15.35	0.00
Acres =	2337732.48	