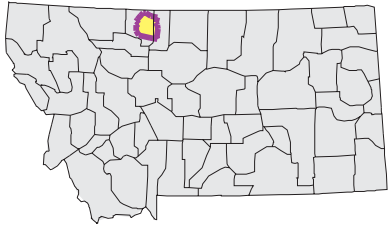


# WILLOW Watershed

National Land Cover Database



Mapscale 1: 300000 Scale In miles:



Date created: November 01, 2003

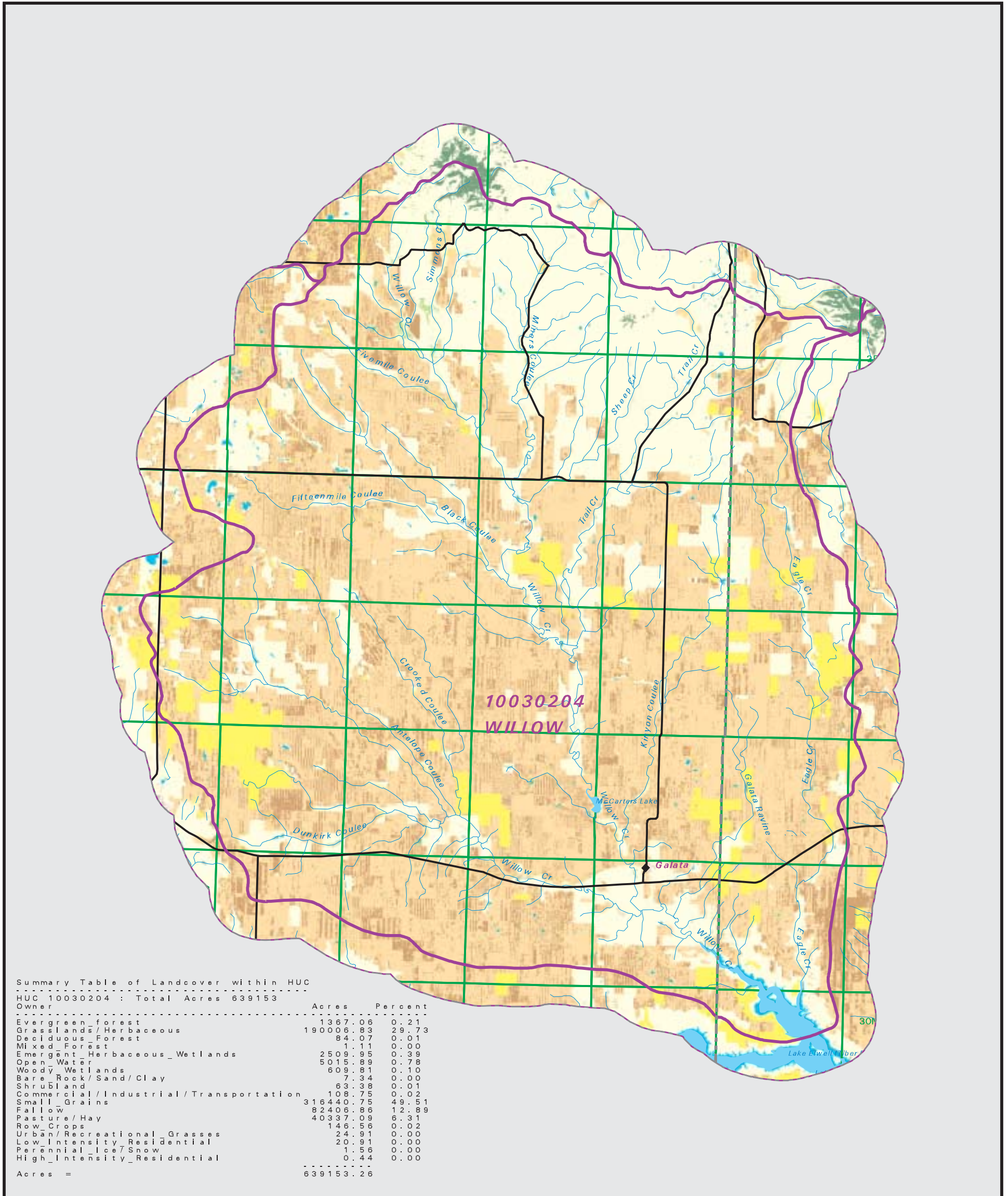
Map Request: 04MSL001 - 10030204 - NLCD

- County Border
- Highway
- Public Land Survey System Townships
- Fourth Code Watersheds
- Open Water
- Perennial Ice/Snow
- Low Intensity Residential
- High Intensity Residential
- Commercial/Industrial Transportation
- Bare Rock/Sand/Clay
- Deciduous Forest
- Evergreen Forest
- Mixed Forest
- Shrubland
- Grasslands/Herbaceous
- Pasture/Hay
- Row Crops
- Small Grains
- Fallow
- Urban/Recreational Grasses
- Woody Wetlands
- Emergent Herbaceous Wetlands

**SOURCE:**

US Geological Survey NLCD files.  
Data from 30-meter Landsat thematic mapper (TM), 1986-1995. This data is intended to display land use patterns, rather than identification of the land use at any particular point. The source data being in raster format, no attempt has been made to summarize the types or limit the legend to the displayed data.

This map is to be used as a primary reference source and is not intended for use in site - specific planning. This is public information and may be interpreted by organizations, agencies, units of government, or others, based on needs; however, they are responsible for the appropriate application. Federal, State, or local regulatory bodies are not to reassign to the Natural Resource Information System any authority for the decisions they make.



Summary Table of Landcover within HUC  
HUC 10030204 : Total Acres 639153

Owner	Acres	Percent
Evergreen Forest	1367.06	0.21
Grasslands/Herbaceous	190006.83	29.73
Deciduous Forest	84.07	0.01
Mixed Forest	1.11	0.00
Emergent Herbaceous Wetlands	2509.95	0.39
Open Water	5015.89	0.78
Woody Wetlands	609.81	0.10
Bare Rock/Sand/Clay	7.34	0.00
Shrubland	63.38	0.01
Commercial/Industrial/Transportation	108.75	0.02
Small Grains	316440.75	49.51
Fallow	82406.86	12.89
Pasture/Hay	40337.09	6.31
Row Crops	146.56	0.02
Urban/Recreational Grasses	24.91	0.00
Low Intensity Residential	20.91	0.00
Perennial Ice/Snow	1.56	0.00
High Intensity Residential	0.44	0.00
Acres =	639153.26	