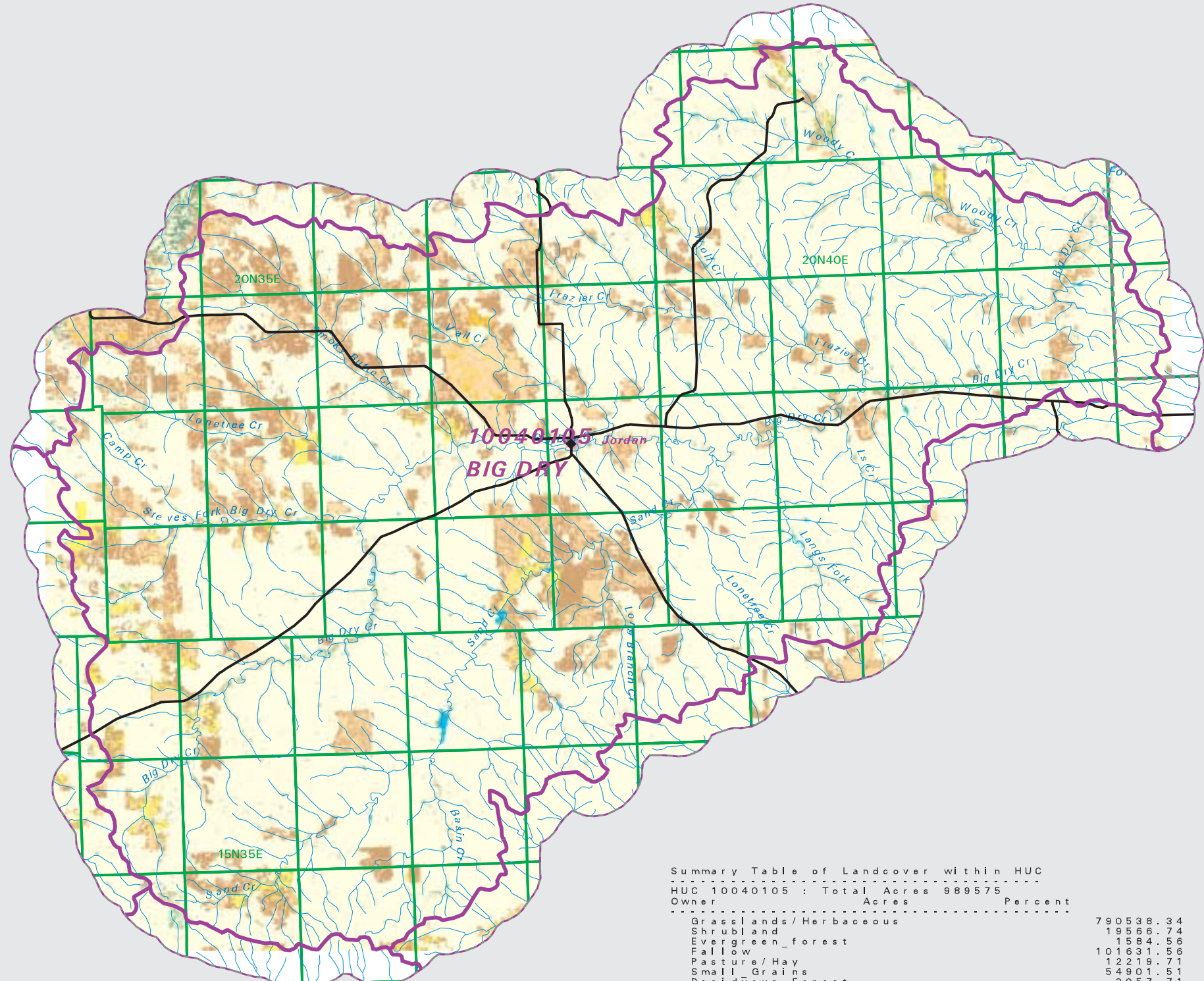


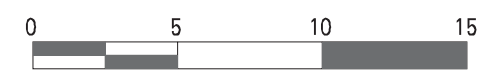
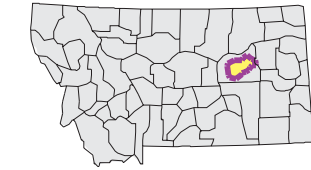
BIG DRY Watershed National Land Cover Database

- County Border
- Highway
- Public Land Survey System Townships
- Fourth Code Watersheds
- Open Water
- Low Intensity Residential
- Commercial/Industrial Transportation
- Bare Rock/Sand/Clay
- Quarries/Strip Mines Gravel Pits
- Deciduous Forest
- Evergreen Forest
- Mixed Forest
- Shrubland
- Grasslands/Herbaceous
- Pasture/Hay
- Row Crops
- Small Grains
- Fallow
- Urban/Recreational Grasses
- Woody Wetlands



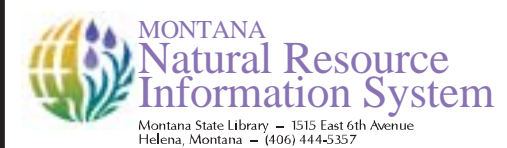
SOURCE:
US Geological Survey NLCD files.
Data from 30-meter Landsat thematic mapper (TM), 1986-1995.
This data is intended to display land use patterns, rather than identification of the land use at any particular point.
The source data being in raster format, no attempt has been made to summarize the types or limit the legend to the displayed data.

This map is to be used as a primary reference source and is not intended for use in site - specific planning. This is public information and may be interpreted by organizations, agencies, units of government, or others, based on needs; however, they are responsible for the appropriate application. Federal, State, or local regulatory bodies are not to reassign to the Natural Resource Information System any authority for the decisions they make.



Mapscale 1: 420000, Scale in miles:

Summary Table of Landcover within HUC		
HUC 10040105 : Total Acres 989575		
Owner	Acres	Percent
Grasslands / Herbaceous	790538.34	79.89
Shrubland	19566.74	1.98
Evergreen forest	1584.56	0.16
Fallow	101631.56	10.27
Pasture / Hay	12219.71	1.23
Small Grains	54901.51	5.55
Deciduous Forest	3057.71	0.31
Open Water	3534.30	0.36
Woody Wetlands	240.19	0.02
Bare Rock / Sand / Clay	61.60	0.01
Row Crops	1941.06	0.20
Low Intensity Residential	187.92	0.02
Commercial / Industrial / Transportation	109.20	0.01
Urban / Recreational Grasses	0.44	0.00
Acres =	989574.84	



Montana State Library - 1515 East 6th Avenue
Helena, Montana - (406) 444-5357
Date created: October 27, 2003
Map Request: 04MSL0001 - 10040105 - NLCD