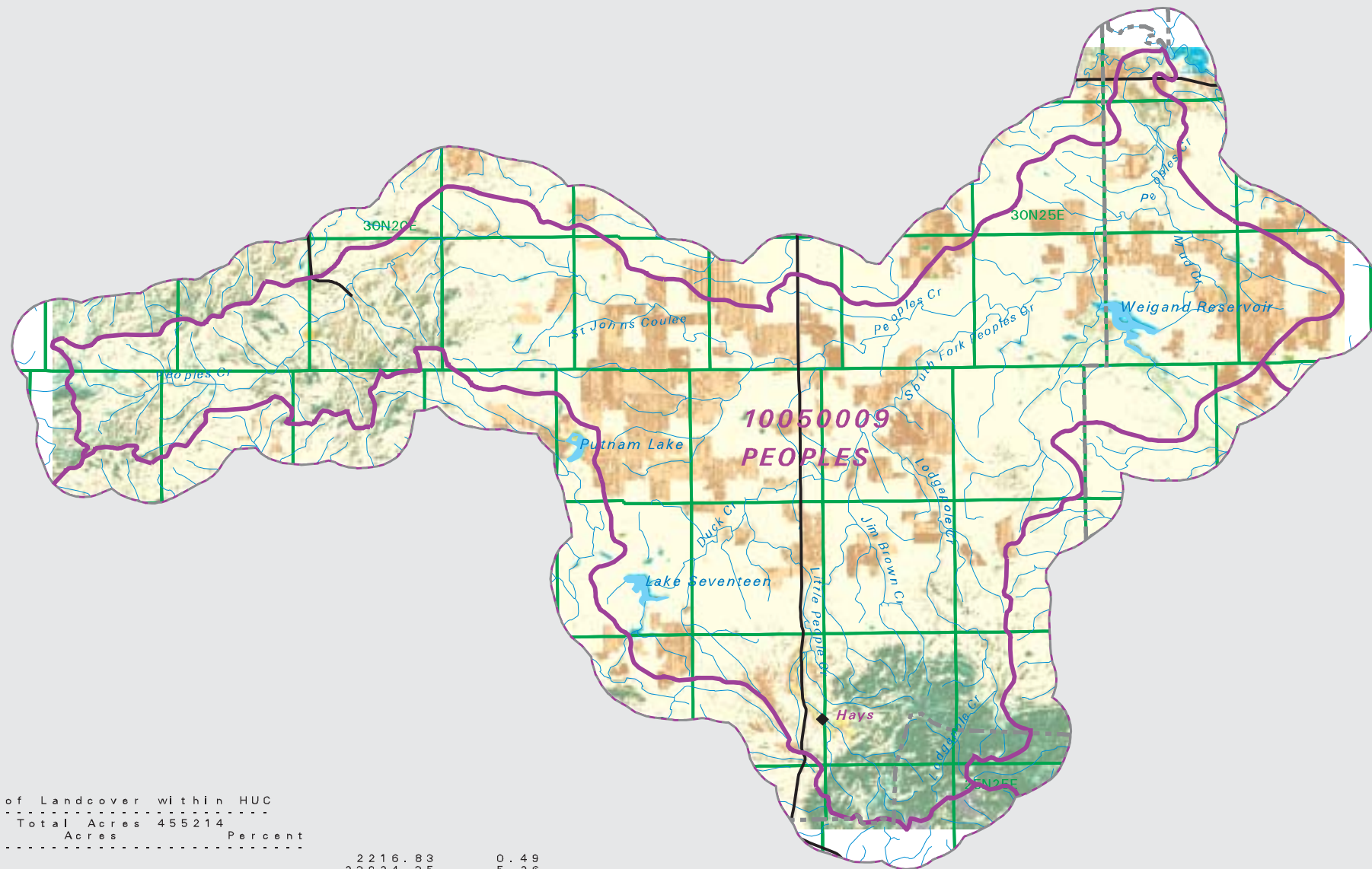


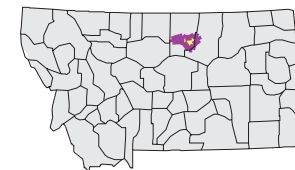
# PEOPLES Watershed National Land Cover Database

- County Border
- Highway
- Public Land Survey System Townships
- Fourth Code Watersheds
- Open Water
- Low Intensity Residential
- Commercial/Industrial Transportation
- Bare Rock/Sand/Clay
- Quarries/Strip Mines Gravel Pits
- Deciduous Forest
- Evergreen Forest
- Mixed Forest
- Shrubland
- Grasslands/Herbaceous
- Pasture/Hay
- Row Crops
- Small Grains
- Fallow
- Urban/Recreational Grasses
- Woody Wetlands
- Emergent Herbaceous Wetlands

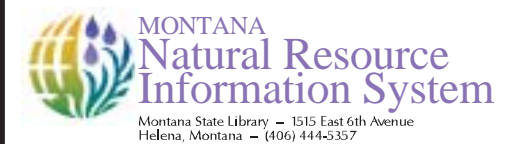


SOURCE:  
US Geological Survey NLCD files.  
Data from 30-meter Landsat thematic mapper (TM), 1986-1995.  
This data is intended to display land use patterns, rather than identification of the land use at any particular point.  
The source data being in raster format, no attempt has been made to summarize the types or limit the legend to the displayed data.

This map is to be used as a primary reference source and is not intended for use in site - specific planning. This is public information and may be interpreted by organizations, agencies, units of government, or others, based on needs; however, they are responsible for the appropriate application. Federal, State, or local regulatory bodies are not to reassign to the Natural Resource Information System any authority for the decisions they make.



Mapscale 1: 420000, Scale in miles:



Date created: October 27, 2003

Map Request: 04MSL0001 - 10050009 - NLCD

Summary Table of Landcover within HUC

HUC 10050009 : Total Acres 455214		
Owner	Acres	Percent
Open Water	2216.83	0.49
Shrubland	23924.35	5.26
Grasslands/Herbaceous	308703.64	67.82
Deciduous Forest	5255.64	1.15
Small Grains	39693.70	8.72
Evergreen forest	26612.88	5.85
Fallow	42581.72	9.35
Pasture/Hay	429.67	0.09
Row Crops	156.79	0.03
Commercial/Industrial/Transportation	314.02	0.07
Bare Rock/Sand/Clay	462.80	0.10
Woody Wetlands	598.69	0.13
Emergent Herbaceous Wetlands	3075.05	0.68
Mixed Forest	1031.47	0.23
Quarries/Strip Mines/Gravel Pits	159.01	0.03
Acres =	455214.26	