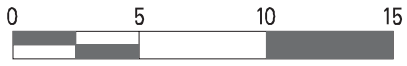
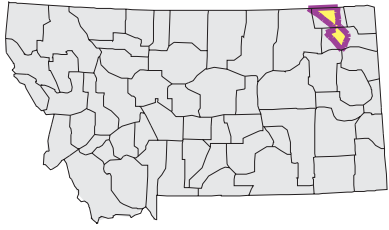
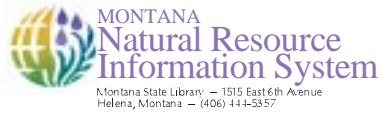


POPLAR Watershed

National Land Cover Database



Mapscale 1: 480000 Scale in miles:



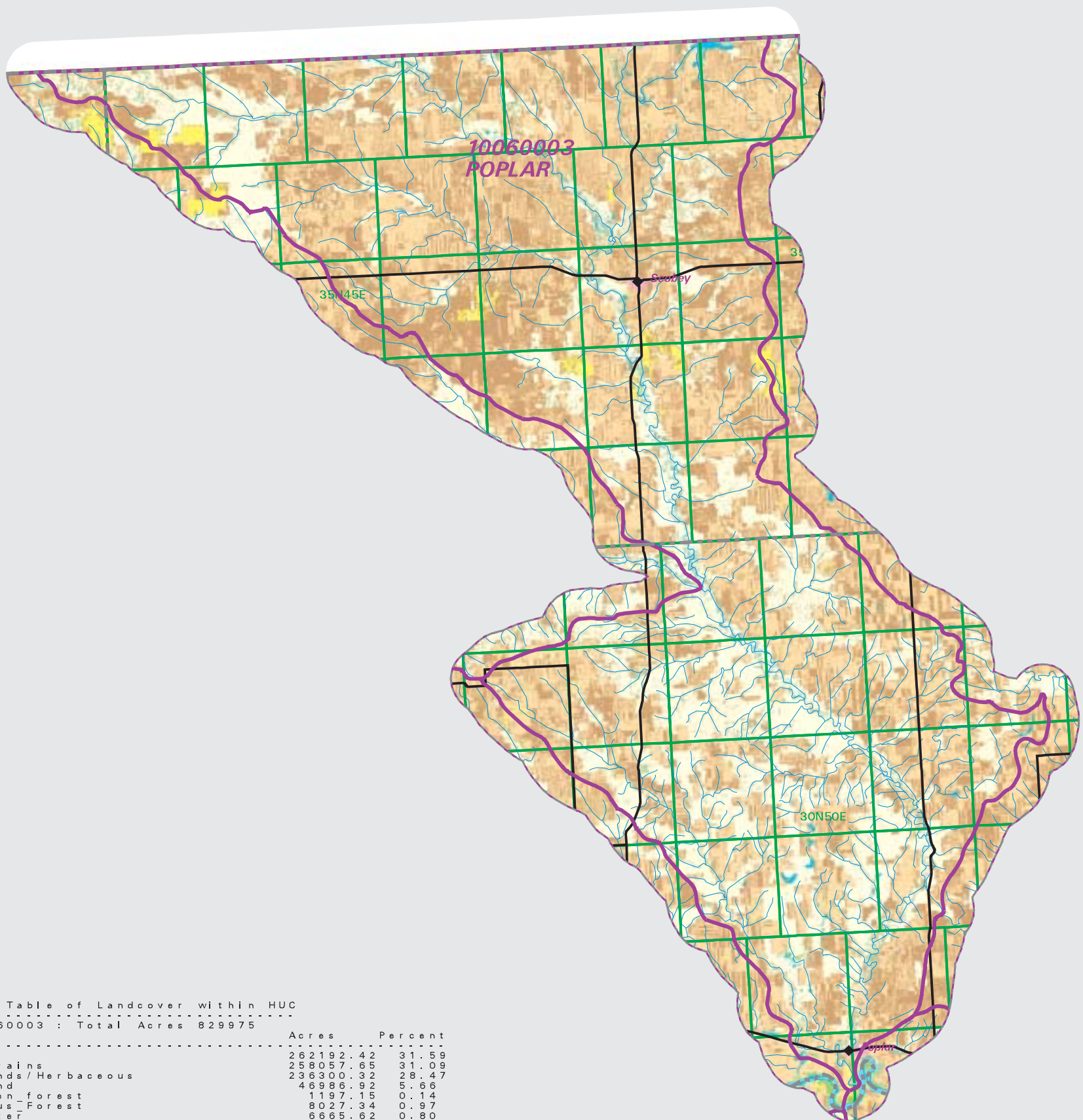
Date created: October 31, 2003

Map Request: 04MSL0001 - 10060003 - NLCD

- County Border
- Highway
- Public Land Survey System Townships
- Fourth Code Watersheds
- Open Water
- Low Intensity Residential
- Commercial/Industrial Transportation
- Bare Rock/Sand/Clay
- Quarries/Strip Mines Gravel Pits
- Transitional
- Deciduous Forest
- Evergreen Forest
- Shrubland
- Grasslands/Herbaceous
- Pasture/Hay
- Row Crops
- Small Grains
- Fallow
- Urban/Recreational Grasses
- Woody Wetlands
- Emergent Herbaceous Wetlands

SOURCE:
US Geological Survey NLCD files.
Data from 30-meter Landsat thematic mapper (TM), 1986-1995.
This data is intended to display land use patterns, rather than identification of the land use at any particular point.
The source data being in raster format, no attempt has been made to summarize the types or limit the legend to the displayed data.

This map is to be used as a primary reference source and is not intended for use in site - specific planning. This is public information and may be interpreted by organizations, agencies, units of government, or others, based on needs; however, they are responsible for the appropriate application. Federal, State, or local regulatory bodies are not to reassign to the Natural Resource Information System any authority for the decisions they make.



Summary Table of Landcover within HUC

HUC 10060003 : Total Acres 829975

Owner	Acres	Percent
Fallow	262192.42	31.59
Small Grains	258057.65	31.09
Grasslands/Herbaceous	236300.32	28.47
Shrubland	46986.92	5.66
Evergreen Forest	1197.15	0.14
Deciduous Forest	8027.34	0.97
Open Water	6665.62	0.80
Row Crops	146.56	0.02
Pasture/Hay	9153.11	1.10
Woody Wetlands	239.07	0.03
Bare Rock/Sand/Clay	39.36	0.00
Emergent Herbaceous Wetlands	65.61	0.01
Low Intensity Residential	674.97	0.08
Commercial/Industrial Transportation	204.38	0.02
Urban/Recreational Grasses	8.45	0.00
Quarries/Strip Mines/Gravel Pits	10.45	0.00
Transitional	5.56	0.00
Acres =	829974.95	