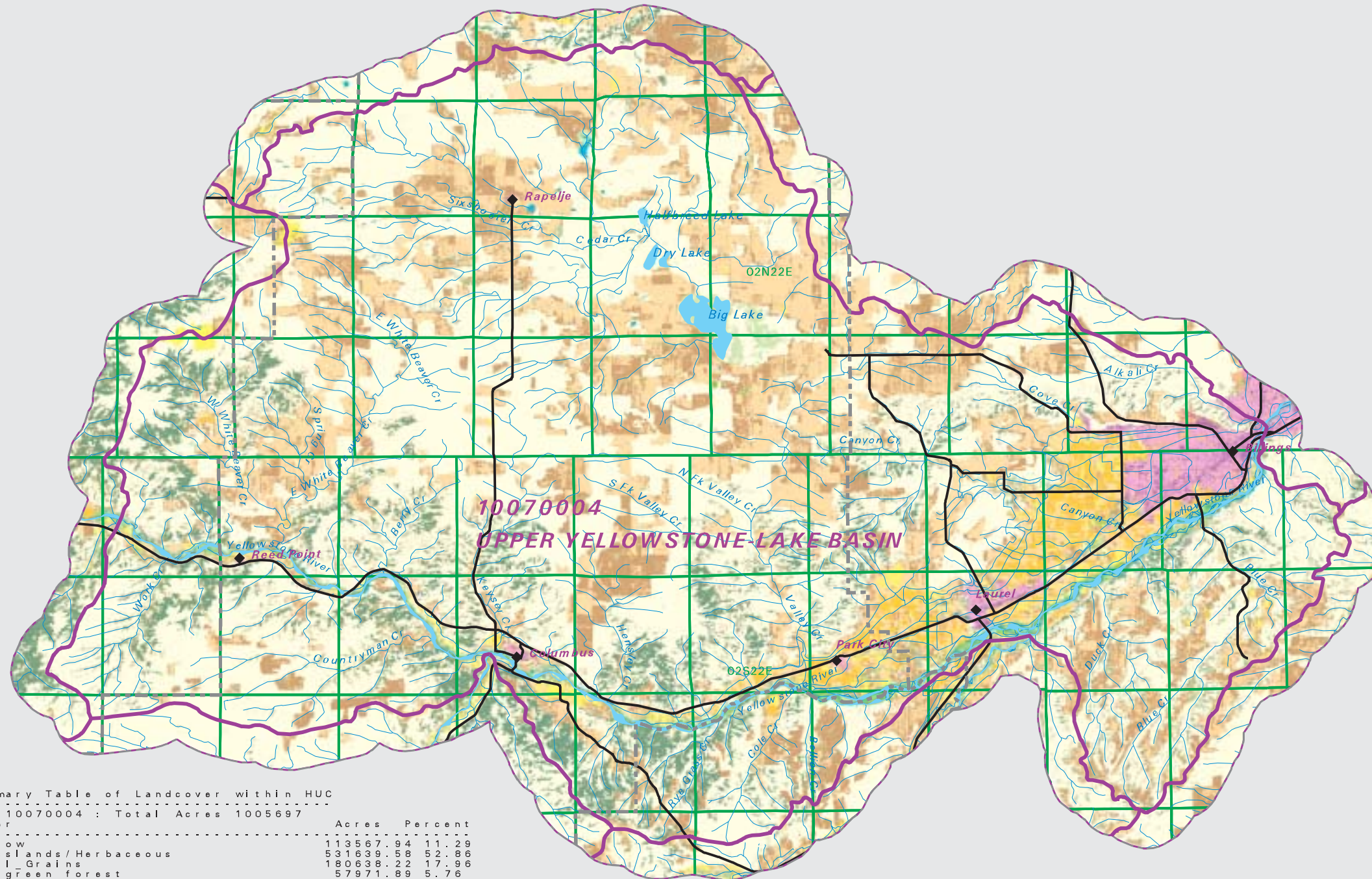


UPPER YELLOWSTONE-LAKE BASIN

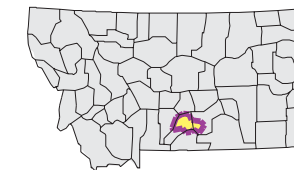
Watershed National Land Cover Database

- County Border
- Highway
- Public Land Survey System Townships
- Fourth Code Watersheds
- Open Water
- Low Intensity Residential
- Commercial/Industrial Transportation
- Bare Rock/Sand/Clay
- Quarries/Strip Mines Gravel Pits
- Transitional
- Deciduous Forest
- Evergreen Forest
- Mixed Forest
- Shrubland
- Grasslands/Herbaceous
- Pasture/Hay
- Row Crops
- Small Grains
- Fallow
- Urban/Recreational Grasses
- Woody Wetlands
- Emergent Herbaceous Wetlands



SOURCE:
US Geological Survey NLCD files.
Data from 30-meter Landsat thematic mapper (TM), 1986-1995.
This data is intended to display land use patterns, rather than identification of the land use at any particular point.
The source data being in raster format, no attempt has been made to summarize the types or limit the legend to the displayed data.

This map is to be used as a primary reference source and is not intended for use in site - specific planning. This is public information and may be interpreted by organizations, agencies, units of government, or others, based on needs; however, they are responsible for the appropriate application. Federal, State, or local regulatory bodies are not to reassign to the Natural Resource Information System any authority for the decisions they make.



Mapscale 1: 400000, Scale in miles:



Montana State Library - 1515 East 6th Avenue
Helena, Montana - (406) 444-5357

Date created: October 29, 2003

Map Request: 04MSL0001 - 10070004 - NLCD

Summary Table of Landcover within HUC

HUC 10070004 : Total Acres 1005697

Owner	Acres	Percent
Fallow	113567.94	11.29
Grasslands/Herbaceous	531639.58	52.86
Small Grains	180638.22	17.96
Evergreen Forest	57971.89	5.76
Shrubland	45766.86	4.55
Deciduous Forest	10107.18	1.00
Pasture/Hay	11900.13	1.18
Open Water	5016.34	0.50
Bare Rock/Sand/Clay	233.74	0.02
Row Crops	16763.68	1.67
Emergent Herbaceous Wetlands	5166.01	0.51
Woody Wetlands	5609.24	0.56
Commercial/Industrial/Transportation	6539.52	0.65
Low Intensity Residential	13040.57	1.30
Urban/Recreational Grasses	1514.06	0.15
Mixed Forest	57.82	0.01
Quarries/Strip Mines/Gravel Pits	164.35	0.02
Acres =	1005697.13	