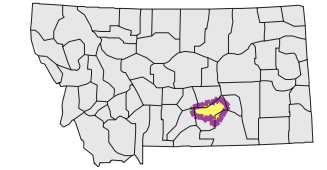


Watershed  
National Land Cover Database

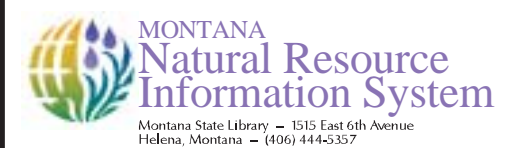
- County Border
- Highway
- Public Land Survey System Townships
- Fourth Code Watersheds
- Open Water
- Low Intensity Residential
- Commercial/Industrial Transportation
- Bare Rock/Sand/Clay
- Quarries/Strip Mines Gravel Pits
- Transitional
- Deciduous Forest
- Evergreen Forest
- Mixed Forest
- Shrubland
- Grasslands/Herbaceous
- Pasture/Hay
- Row Crops
- Small Grains
- Fallow
- Urban/Recreational Grasses
- Woody Wetlands
- Emergent Herbaceous Wetlands

SOURCE:  
US Geological Survey NLCD files.  
Data from 30-meter Landsat thematic mapper (TM), 1986-1995.  
This data is intended to display land use patterns, rather than identification of the land use at any particular point.  
The source data being in raster format, no attempt has been made to summarize the types or limit the legend to the displayed data.

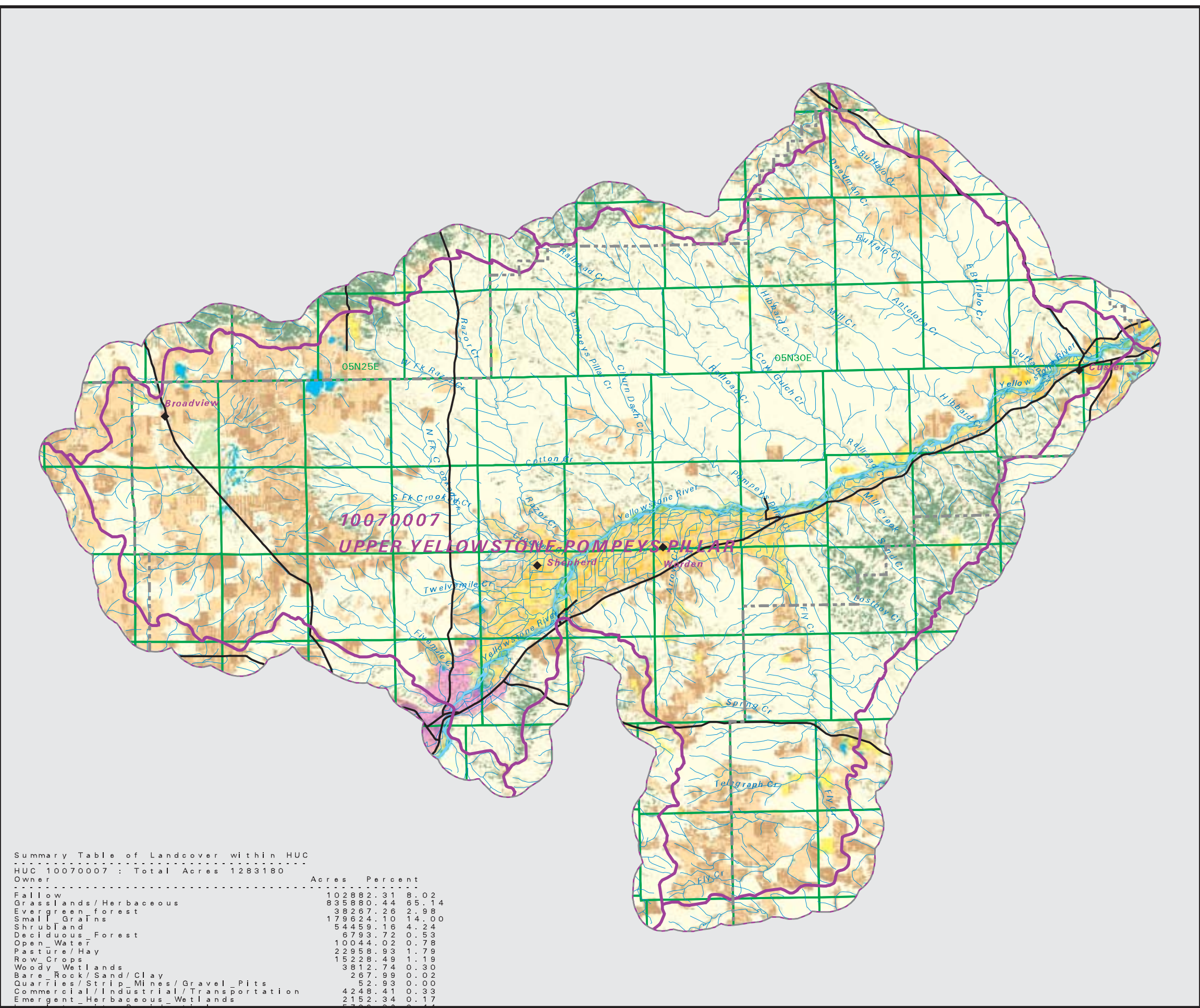
This map is to be used as a primary reference source and is not intended for use in site - specific planning. This is public information and may be interpreted by organizations, agencies, units of government, or others, based on needs; however, they are responsible for the appropriate application. Federal, State, or local regulatory bodies are not to reassign to the Natural Resource Information System any authority for the decisions they make.



Mapscale 1: 440000, Scale in miles:



Date created: November 01, 2003  
Map Request: 04MSL0001 - 10070007 - NLCD



Summary Table of Landcover within HUC  
HUC 10070007 : Total Acres 1283180

Owner	Acres	Percent
Fallow	102882.31	8.02
Grasslands/Herbaceous	835880.44	65.14
Evergreen forest	38267.26	2.98
Small Grains	179624.10	14.00
Shrubland	54459.16	4.24
Deciduous Forest	8793.72	0.68
Open Water	10044.02	0.78
Pasture/Hay	22958.93	1.79
Row Crops	15228.49	1.19
Woody Wetlands	3812.74	0.30
Bare Rock/Sand/Clay	267.99	0.02
Quarries/Strip Mines/Gravel Pits	52.93	0.00
Commercial/Industrial/Transportation	4248.41	0.33
Emergent_Herbaceous_Wetlands	2152.34	0.17
Urban/Recreational_Grasses	733.24	0.06
Mixed Forest	37.58	0.00
Transitional	26.91	0.00
Acres =	1283179.89	