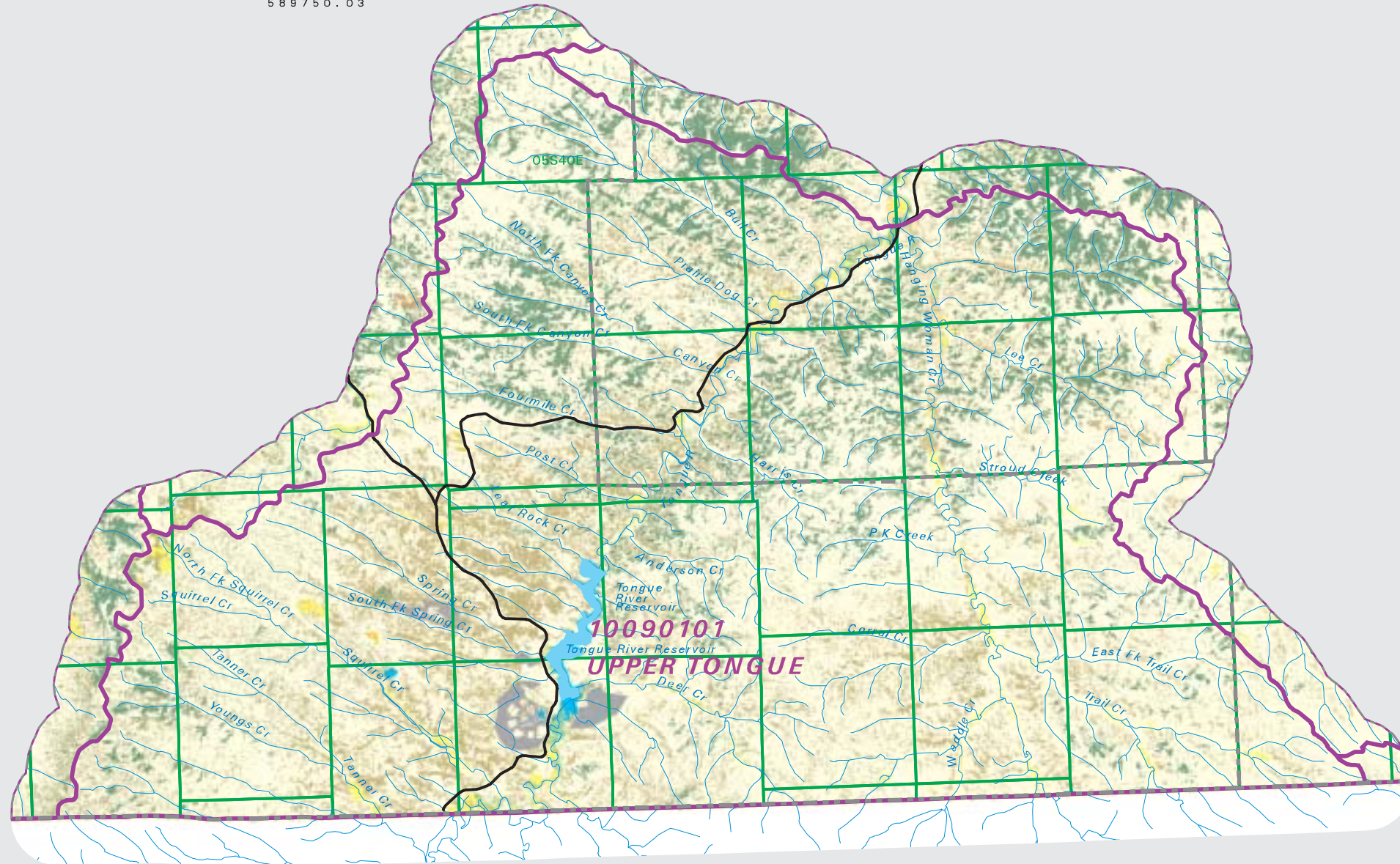


Summary Table of Landcover within HUC		
HUC 10090101 : Total Acres 589750		
Owner	Acres	Percent
Grasslands/Herbaceous	410685.25	69.64
Shrubland	96521.15	16.37
Evergreen forest	63748.15	10.81
Small Grains	2029.58	0.34
Deciduous Forest	2416.54	0.41
Mixed Forest	227.73	0.04
Bare Rock/Sand/Clay	163.24	0.03
Woody Wetlands	521.96	0.09
Open Water	2864.89	0.49
Pasture/Hay	5179.80	0.88
Fallow	90.51	0.02
Emergent Herbaceous Wetlands	730.12	0.12
Quarries/Strip Mines/Gravel Pits	4179.91	0.71
Row Crops	390.08	0.07
Low Intensity Residential	0.22	0.00
Commercial/Industrial/Transportation	0.89	0.00
Acres =	589750.03	

UPPER TONGUE

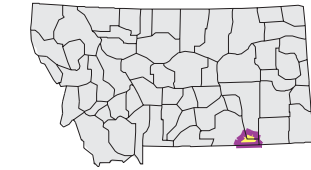
Watershed National Land Cover Database

- County Border
- Highway
- Public Land Survey System Townships
- Fourth Code Watersheds
- Open Water
- Low Intensity Residential
- Commercial/Industrial Transportation
- Bare Rock/Sand/Clay
- Quarries/Strip Mines Gravel Pits
- Transitional
- Deciduous Forest
- Evergreen Forest
- Mixed Forest
- Shrubland
- Grasslands/Herbaceous
- Pasture/Hay
- Row Crops
- Small Grains
- Fallow
- Woody Wetlands
- Emergent Herbaceous Wetlands

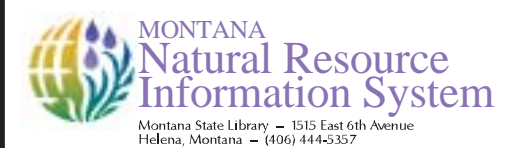


SOURCE:
 US Geological Survey NLCD files.
 Data from 30-meter Landsat thematic mapper (TM), 1986-1995.
 This data is intended to display land use patterns, rather than identification of the land use at any particular point.
 The source data being in raster format, no attempt has been made to summarize the types or limit the legend to the displayed data.

This map is to be used as a primary reference source and is not intended for use in site - specific planning. This is public information and may be interpreted by organizations, agencies, units of government, or others, based on needs; however, they are responsible for the appropriate application. Federal, State, or local regulatory bodies are not to reassign to the Natural Resource Information System any authority for the decisions they make.



Mapscale 1: 350000, Scale in miles:



Montana State Library - 1515 East 6th Avenue
 Helena, Montana - (406) 444-5357
 Date created: October 28, 2003
 Map Request: 04MSL0001 - 10090101 - NLCD