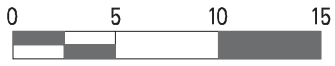
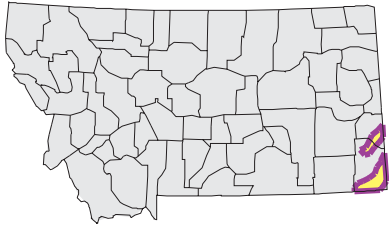
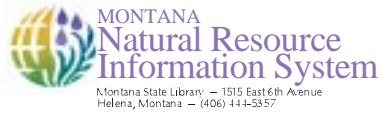


UPPER LITTLE MISSOURI Watershed

National Land Cover Database



Mapscale 1: 592000 Scale in miles:



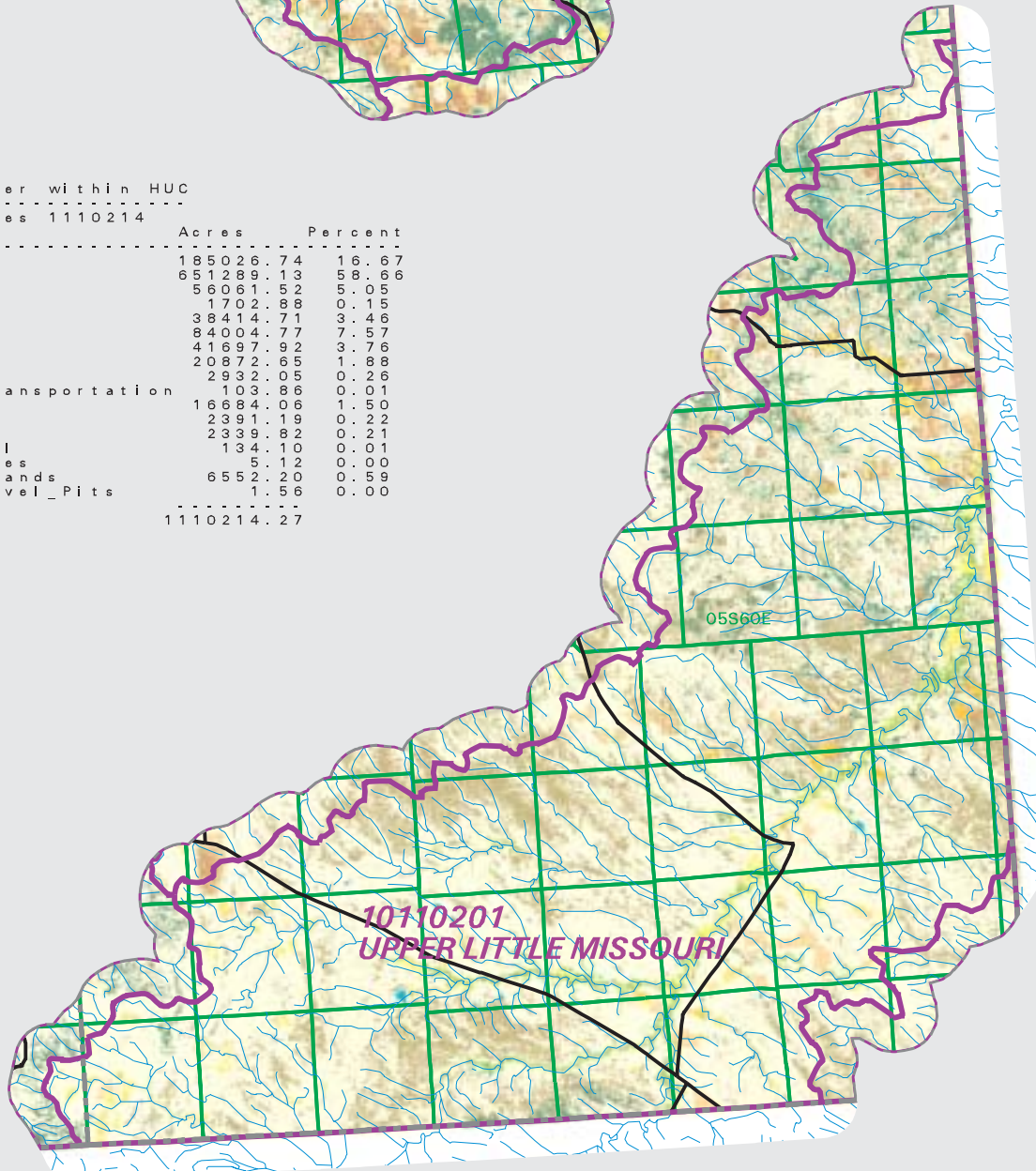
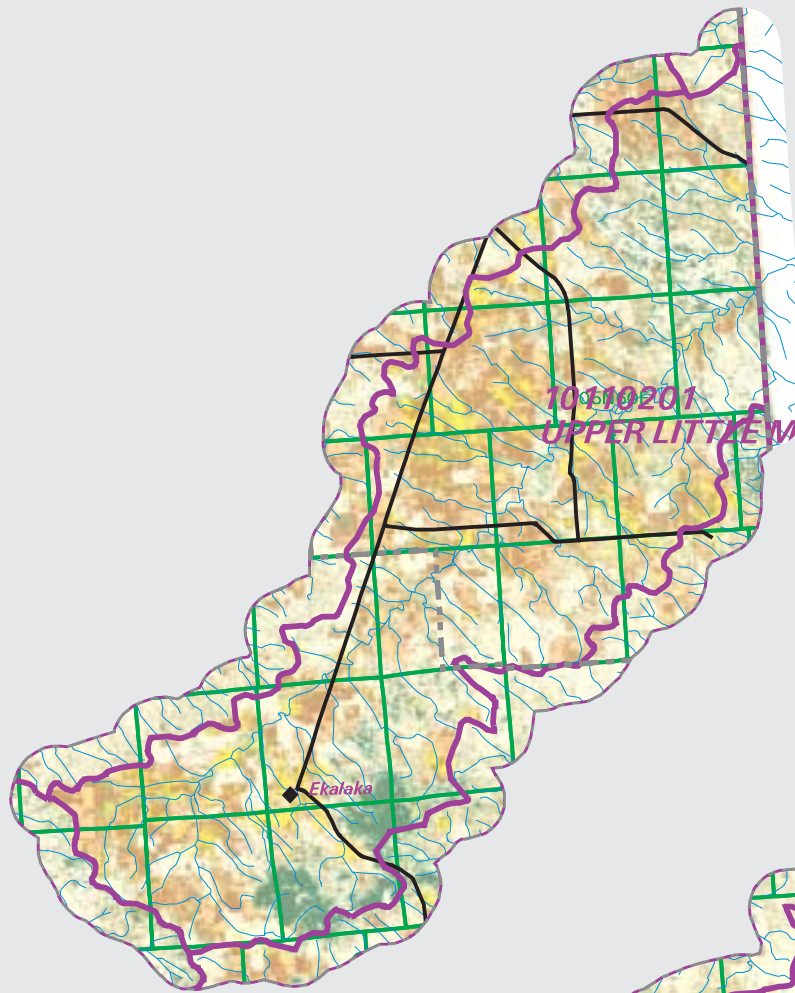
Date created: October 30, 2003

Map Request: 04MSL0001 - 10110201 - NLCD

- County Border
- Highway
- Public Land Survey System Townships
- Fourth Code Watersheds
- Open Water
- Low Intensity Residential
- Commercial/Industrial Transportation
- Bare Rock/Sand/Clay
- Quarries/Strip Mines Gravel Pits
- Deciduous Forest
- Evergreen Forest
- Mixed Forest
- Shrubland
- Grasslands/Herbaceous
- Pasture/Hay
- Row Crops
- Small Grains
- Fallow
- Urban/Recreational Grasses
- Woody Wetlands
- Emergent Herbaceous Wetlands

SOURCE:
US Geological Survey NLCD files.
Data from 30-meter Landsat thematic mapper (TM), 1986-1995.
This data is intended to display land use patterns, rather than identification of the land use at any particular point.
The source data being in raster format, no attempt has been made to summarize the types or limit the legend to the displayed data.

This map is to be used as a primary reference source and is not intended for use in site-specific planning. This is public information and may be interpreted by organizations, agencies, units of government, or others, based on needs; however, they are responsible for the appropriate application. Federal, State, or local regulatory bodies are not to reassign to the Natural Resource Information System any authority for the decisions they make.



Summary Table of Landcover within HUC

HUC 10110201 : Total Acres 1110214

Owner	Acres	Percent
Shrubland	185026.74	16.67
Grasslands/Herbaceous	651289.13	58.66
Small Grains	56061.52	5.05
Bare Rock/Sand/Clay	1702.88	0.15
Evergreen_forest	38414.71	3.46
Fallow	84004.77	7.57
Pasture/Hay	41697.92	3.76
Deciduous_Forest	20872.65	1.88
Open_Water	2932.05	0.26
Commercial/Industrial/Transportation	103.86	0.01
Woody_Wetlands	16684.06	1.50
Row_Crops	2391.19	0.22
Mixed_Forest	2339.82	0.21
Low_Intensity_Residential	134.10	0.01
Urban/Recreational_Grasses	5.12	0.00
Emergent_Herbaceous_Wetlands	6552.20	0.59
Quarries/Strip_Mines/Gravel_Pits	1.56	0.00
Acres =	1110214.27	