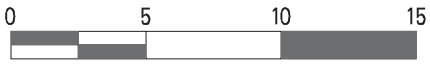
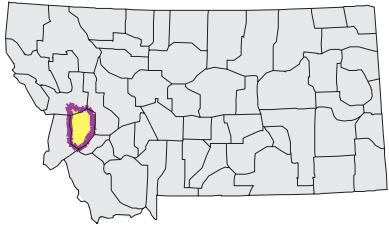
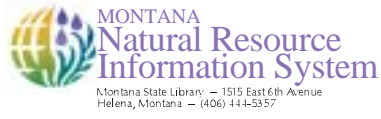


FLINT-ROCK Watershed

National Land Cover Database



Mapscale 1: 450000 Scale in miles:



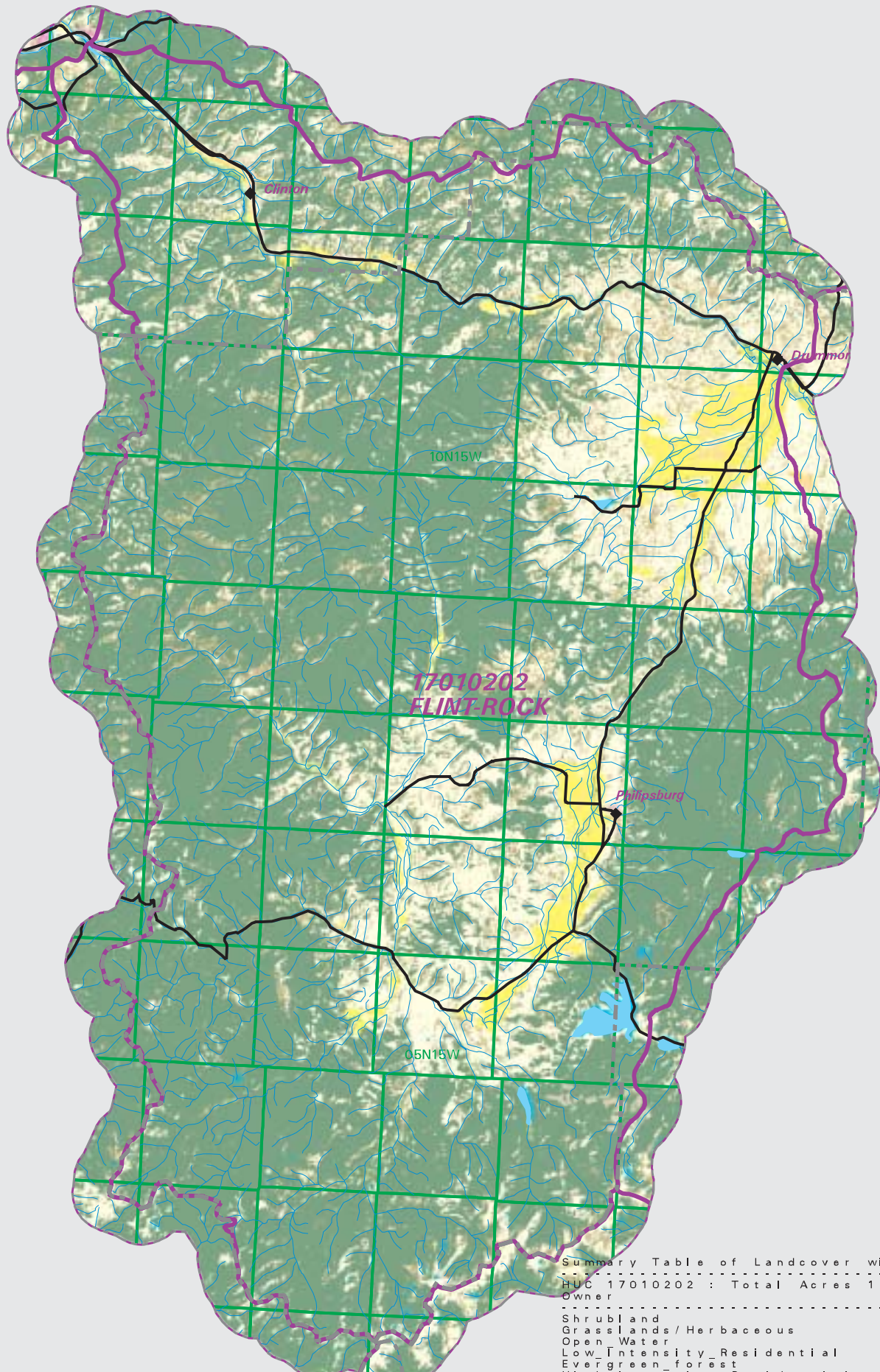
Date created: October 29, 2003

Map Request: 04MSL0001 - 17010202 - NLCD

- County Border
- Highway
- Public Land Survey System Townships
- Fourth Code Watersheds
- Open Water
- Perennial Ice/Snow
- Low Intensity Residential
- High Intensity Residential
- Commercial/Industrial Transportation
- Bare Rock/Sand/Clay
- Transitional
- Deciduous Forest
- Evergreen Forest
- Mixed Forest
- Shrubland
- Grasslands/Herbaceous
- Pasture/Hay
- Row Crops
- Small Grains
- Urban/Recreational Grasses
- Woody Wetlands
- Emergent Herbaceous Wetlands

SOURCE:
US Geological Survey NLCD files.
Data from 30-meter Landsat thematic mapper (TM), 1986-1995.
This data is intended to display land use patterns, rather than identification of the land use at any particular point.
The source data being in raster format, no attempt has been made to summarize the types or limit the legend to the displayed data.

This map is to be used as a primary reference source and is not intended for use in site - specific planning. This is public information and may be interpreted by organizations, agencies, units of government, or others, based on needs; however, they are responsible for the appropriate application. Federal, State, or local regulatory bodies are not to reassign to the Natural Resource Information System any authority for the decisions they make.



Summary Table of Landcover within HUC
HUC 17010202 : Total Acres 1142624

Owner	Acres	Percent
Shrubland	109591.29	9.59
Grasslands/Herbaceous	250229.58	21.90
Open Water	5773.37	0.51
Low Intensity Residential	164.79	0.01
Evergreen forest	724096.54	63.37
High Intensity Residential	60.49	0.01
Commercial/Industrial/Transportation	1192.48	0.10
Urban/Recreational Grasses	576.00	0.05
Woody Wetlands	5090.17	0.45
Emergent Herbaceous Wetlands	920.49	0.08
Transitional	2585.34	0.23
Deciduous Forest	2578.89	0.23
Bare Rock/Sand/Clay	1122.87	0.10
Mixed Forest	51.60	0.00
Pasture/Hay	34051.32	2.98
Small Grains	3838.54	0.34
Row Crops	617.59	0.05
Perennial Ice/Snow	82.29	0.01
Acres =	1142623.65	