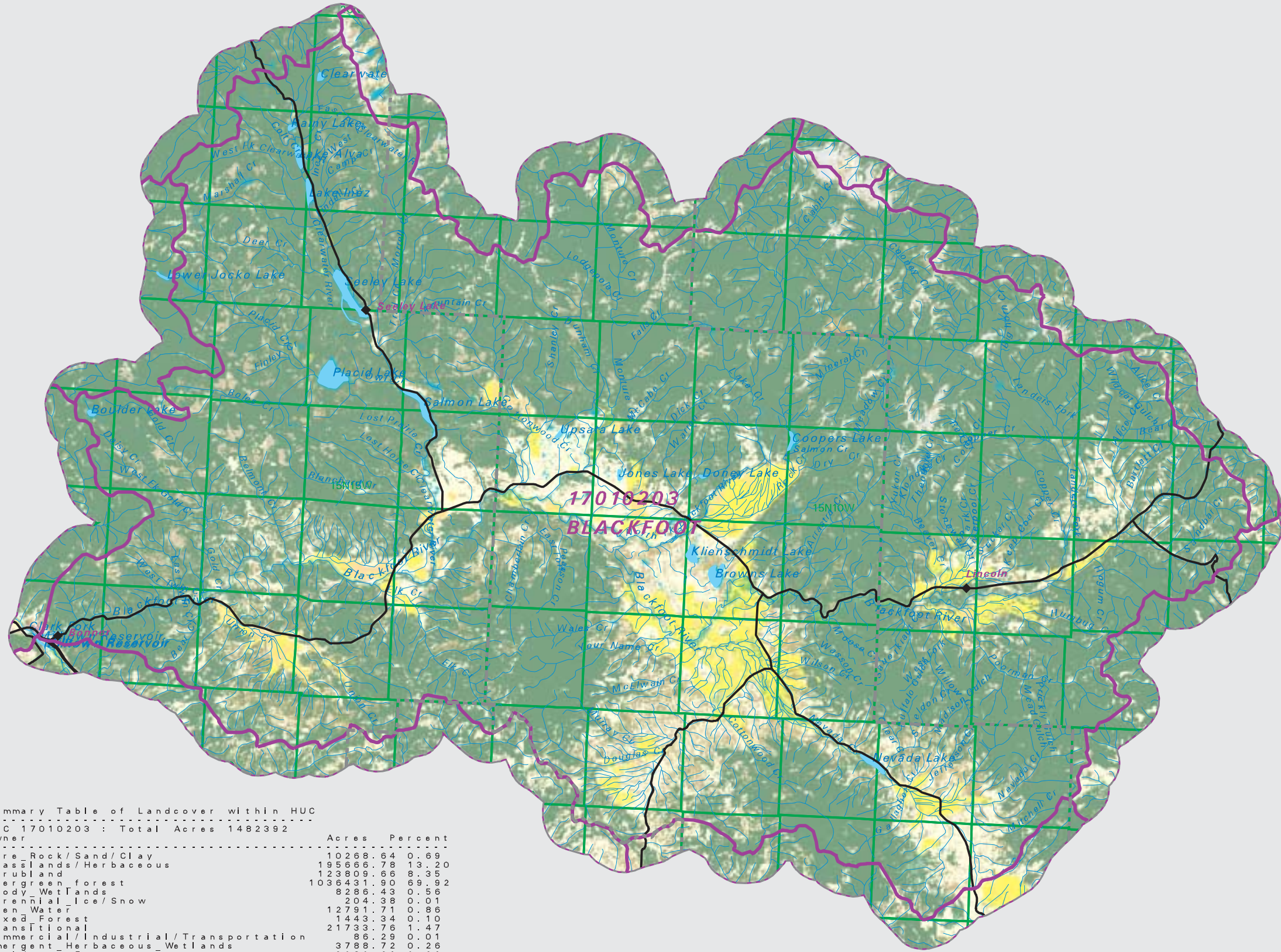


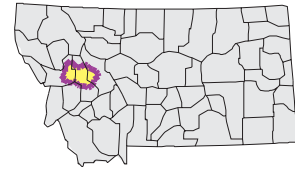
BLACKFOOT Watershed National Land Cover Database

- County Border
- Highway
- Public Land Survey System Townships
- Fourth Code Watersheds
- Open Water
- Perennial Ice/Snow
- Low Intensity Residential
- High Intensity Residential
- Commercial/Industrial Transportation
- Bare Rock/Sand/Clay
- Transitional
- Deciduous Forest
- Evergreen Forest
- Mixed Forest
- Shrubland
- Grasslands/Herbaceous
- Pasture/Hay
- Row Crops
- Small Grains
- Fallow
- Urban/Recreational Grasses
- Woody Wetlands
- Emergent Herbaceous Wetlands



SOURCE:
 US Geological Survey NLCD files.
 Data from 30-meter Landsat thematic mapper (TM), 1986-1995.
 This data is intended to display land use patterns, rather than identification of the land use at any particular point.
 The source data being in raster format, no attempt has been made to summarize the types or limit the legend to the displayed data.

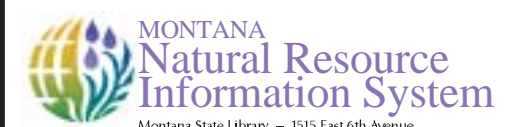
This map is to be used as a primary reference source and is not intended for use in site - specific planning. This is public information and may be interpreted by organizations, agencies, units of government, or others, based on needs; however, they are responsible for the appropriate application. Federal, State, or local regulatory bodies are not to reassign to the Natural Resource Information System any authority for the decisions they make.



Mapscale 1: 440000, Scale in miles:

Summary Table of Landcover within HUC

Owner	Acres	Percent
HUC 17010203 : Total Acres	1482392	
Bare_Rock/Sand/Clay	10268.64	0.69
Grasslands/Herbaceous	195666.78	13.20
Shrubland	123809.66	8.35
Evergreen forest	1036431.90	69.92
Woody_Wetlands	8286.43	0.56
Perennial_Ice/Snow	204.38	0.01
Open_Water	12791.71	0.86
Mixed_Forest	1443.34	0.10
Transitional	21733.76	1.47
Commercial/Industrial/Transportation	86.29	0.01
Emergent_Herbaceous_Wetlands	3788.72	0.26
Deciduous_Forest	3080.61	0.21
Pasture/Hay	56018.37	3.78
Low_Intensity_Residential	66.05	0.00
Urban/Recreational_Grasses	72.72	0.00
High_Intensity_Residential	32.91	0.00
Small_Grains	8436.55	0.57
Row_Crops	173.47	0.01
Acres =	1482392.31	



Montana State Library - 1515 East 6th Avenue
 Helena, Montana - (406) 444-5357

Date created: October 30, 2003

Map Request: 04MSL0001 - 17010203 - NLCD