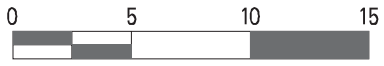
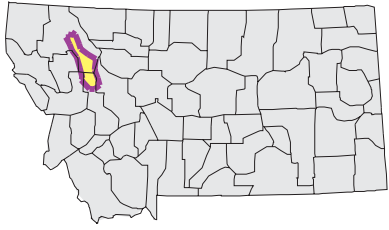
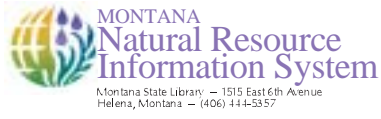


# SOUTH FORK FLATHEAD Watershed

## National Land Cover Database



Mapscale 1: 512000 Scale in miles:



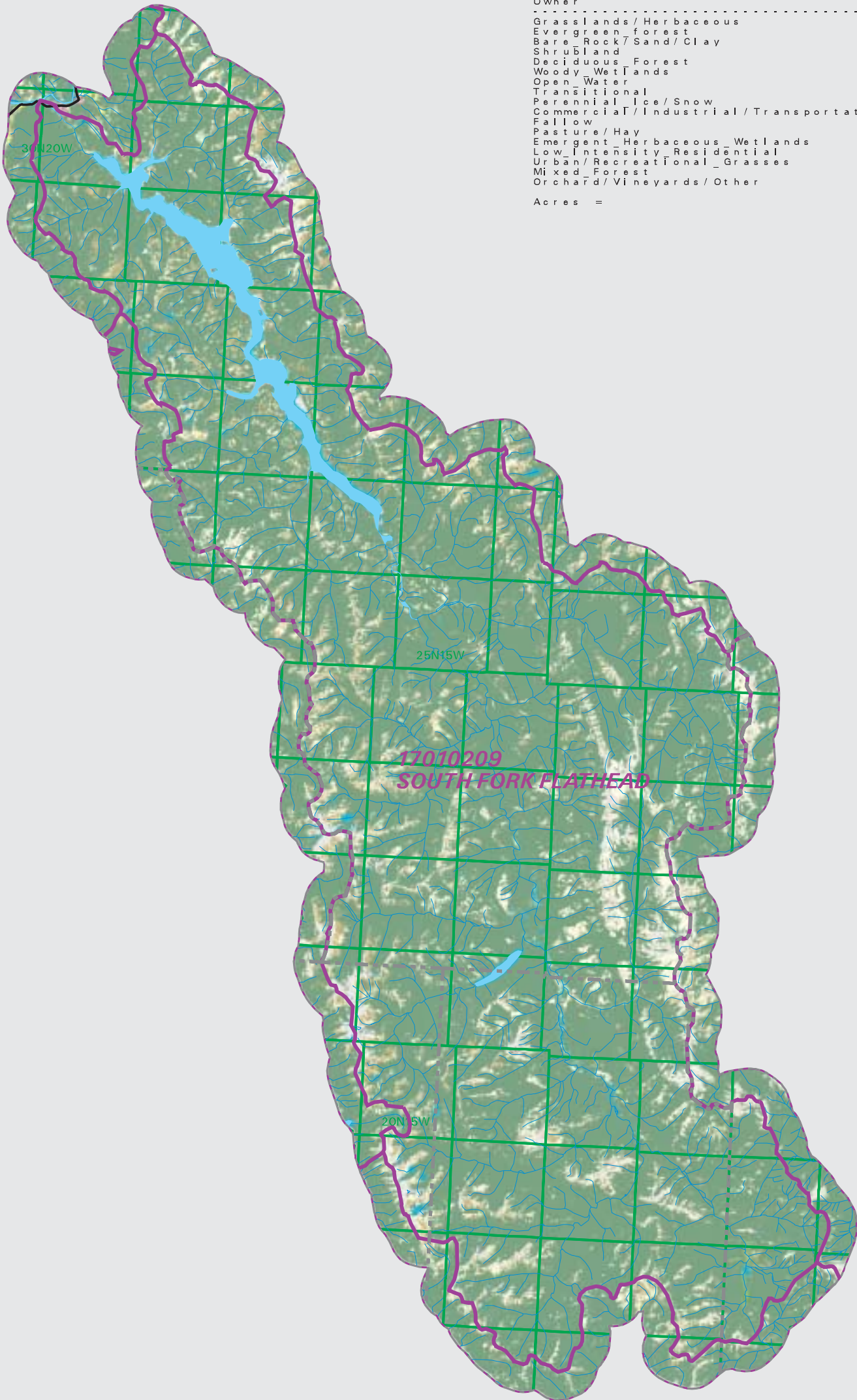
Date created: October 30, 2003

Map Request: 04MSL0001 - 17010209 - NLCD

- County Border
- Highway
- Public Land Survey System Townships
- Fourth Code Watersheds
- Open Water
- Perennial Ice/Snow
- Low Intensity Residential
- High Intensity Residential
- Commercial/Industrial Transportation
- Bare Rock/Sand/Clay
- Transitional
- Deciduous Forest
- Evergreen Forest
- Mixed Forest
- Shrubland
- Orchards/Vineyards Other
- Grasslands/Herbaceous
- Pasture/Hay
- Small Grains
- Fallow
- Urban/Recreational Grasses
- Woody Wetlands
- Emergent Herbaceous Wetlands

SOURCE:  
US Geological Survey NLCD files.  
Data from 30-meter Landsat thematic mapper (TM), 1986-1995.  
This data is intended to display land use patterns, rather than identification of the land use at any particular point.  
The source data being in raster format, no attempt has been made to summarize the types or limit the legend to the displayed data.

This map is to be used as a primary reference source and is not intended for use in site - specific planning. This is public information and may be interpreted by organizations, agencies, units of government, or others, based on needs; however, they are responsible for the appropriate application. Federal, State, or local regulatory bodies are not to reassign to the Natural Resource Information System any authority for the decisions they make.



Summary Table of Landcover within HUC		
HUC 17010209 : Total Acres 1070838		
Owner	Acres	Percent
Grasslands / Herbaceous	81954.95	7.65
Evergreen forest	855361.83	79.88
Bare Rock / Sand / Clay	34817.92	3.25
Shrubland	68210.95	6.37
Deciduous Forest	1337.93	0.12
Woody Wetlands	1067.94	0.10
Open Water	24150.30	2.26
Transitional	2009.12	0.19
Perennial Ice / Snow	559.32	0.05
Commercial / Industrial / Transportation	115.87	0.01
Fallow	11.34	0.00
Pasture / Hay	48.70	0.00
Emergent Herbaceous Wetlands	58.49	0.01
Low Intensity Residential	2.45	0.00
Urban / Recreational Grasses	1097.96	0.10
Mixed Forest	30.25	0.00
Orchard / Vineyards / Other		
Acres =	1070838.21	