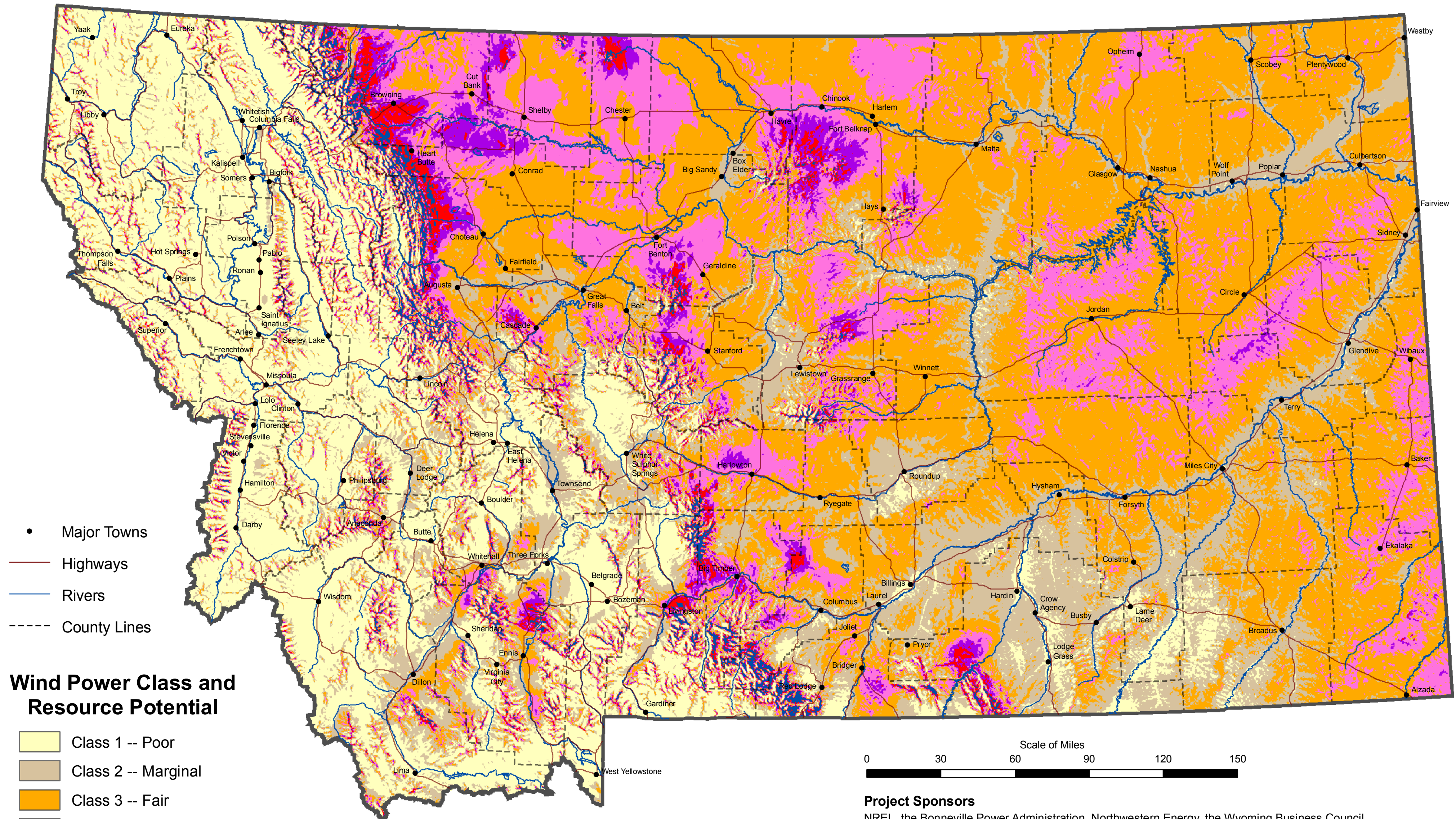


Montana Wind Power

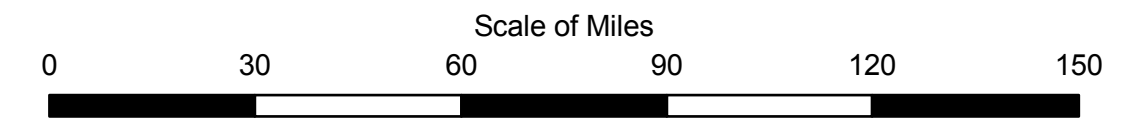


- Major Towns
- Highways
- Rivers
- - - County Lines

Wind Power Class and Resource Potential

- Class 1 -- Poor
- Class 2 -- Marginal
- Class 3 -- Fair
- Class 4 -- Good
- Class 5 -- Excellent
- Class 6 -- Outstanding
- Class 7 -- Superb

The wind resource estimates on this map were developed by True Wind Solutions in 2002 using MesoMap, a mesoscale atmospheric simulation system, at a spatial resolution of 400 meters (1/4 mile). The estimates have been validated by the National Renewable Energy Laboratory (NREL) and independent meteorologist but should be confirmed by direct measurement according to wind energy industry standards.



Project Sponsors
 NREL, the Bonneville Power Administration, Northwestern Energy, the Wyoming Business Council, enXco, the Northwest Power Planning Council, Zilkha Renewable Energy, Klickitat County, EnronWind, ABB, Renewable Energy Systems (USA) Inc, Chelan Public Utility District, Idaho Power, Windland, Inc., WSACAA Energy Project, Vestas, Jones & Stokes, CH2M Hill, Suzion Energy, Northwest Wildlife Consultants, Inc., and Cielo Wind Power.

For more information see www.windpowermaps.org