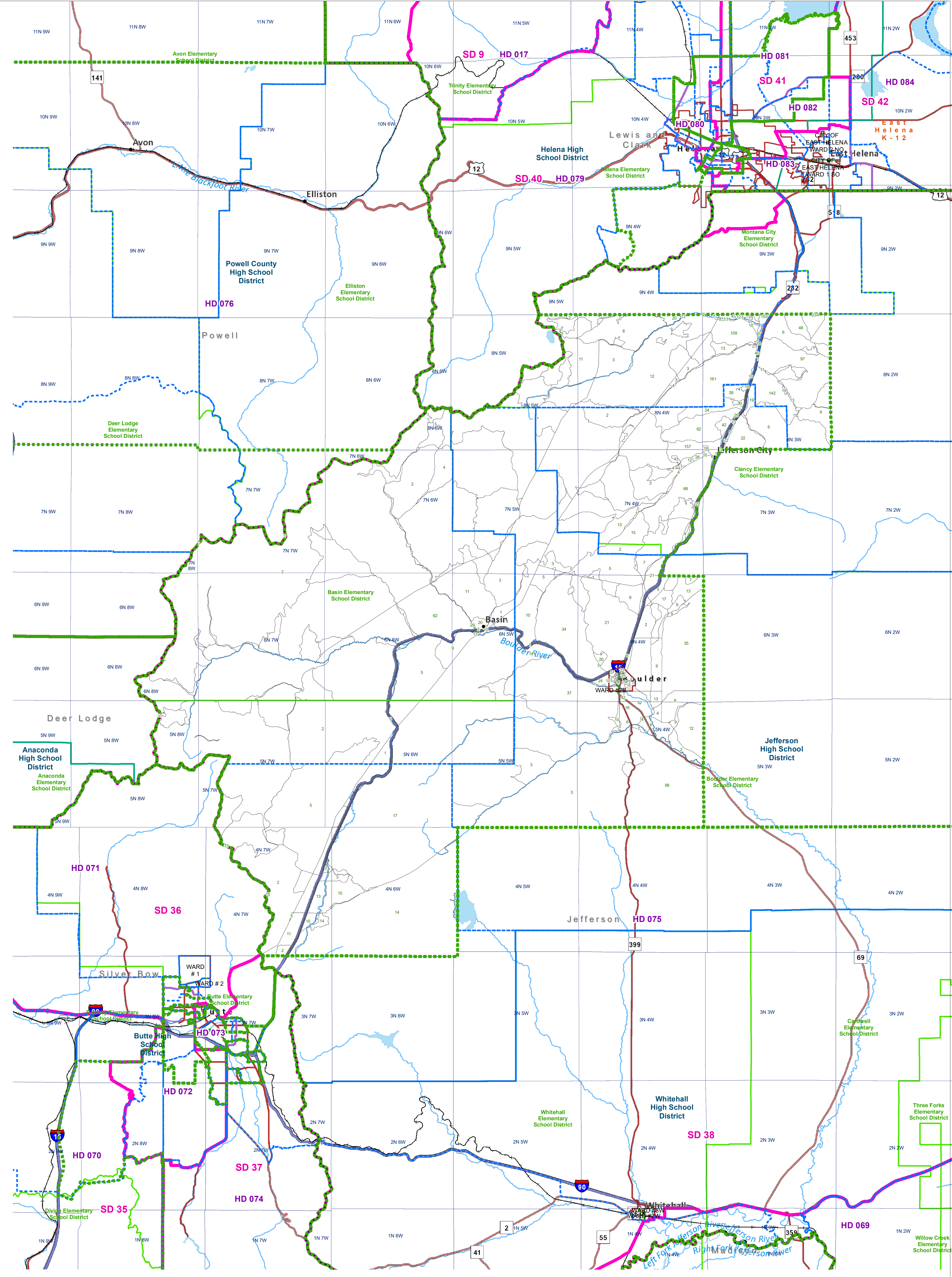
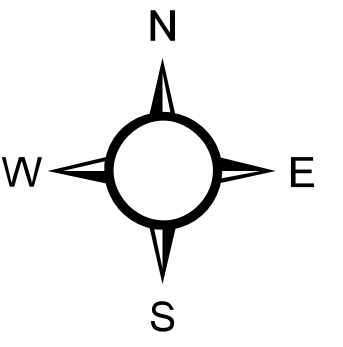


# Jefferson - District 2 - Central County Commissioner Districts with 2020 Census Blocks

Total Population: 3,651



- County Commissioner Districts
- Voting Precincts
- Secondary School Districts
- Incorporated Cities and Towns
- Township Boundary
- Senate
- Elementary School Districts
- Wards
- Tribal Nations Reservations
- House
- Unified (K-12) School Districts
- 2020 Census Blocks with Total Population Labeled



Voting Precincts  
 Montana State Library  
 Created on 3/9/2023  
 Meghan Burns | GeoEnabledElections@mt.gov  
<https://geoenabled-elections-montana.hub.arcgis.com/>