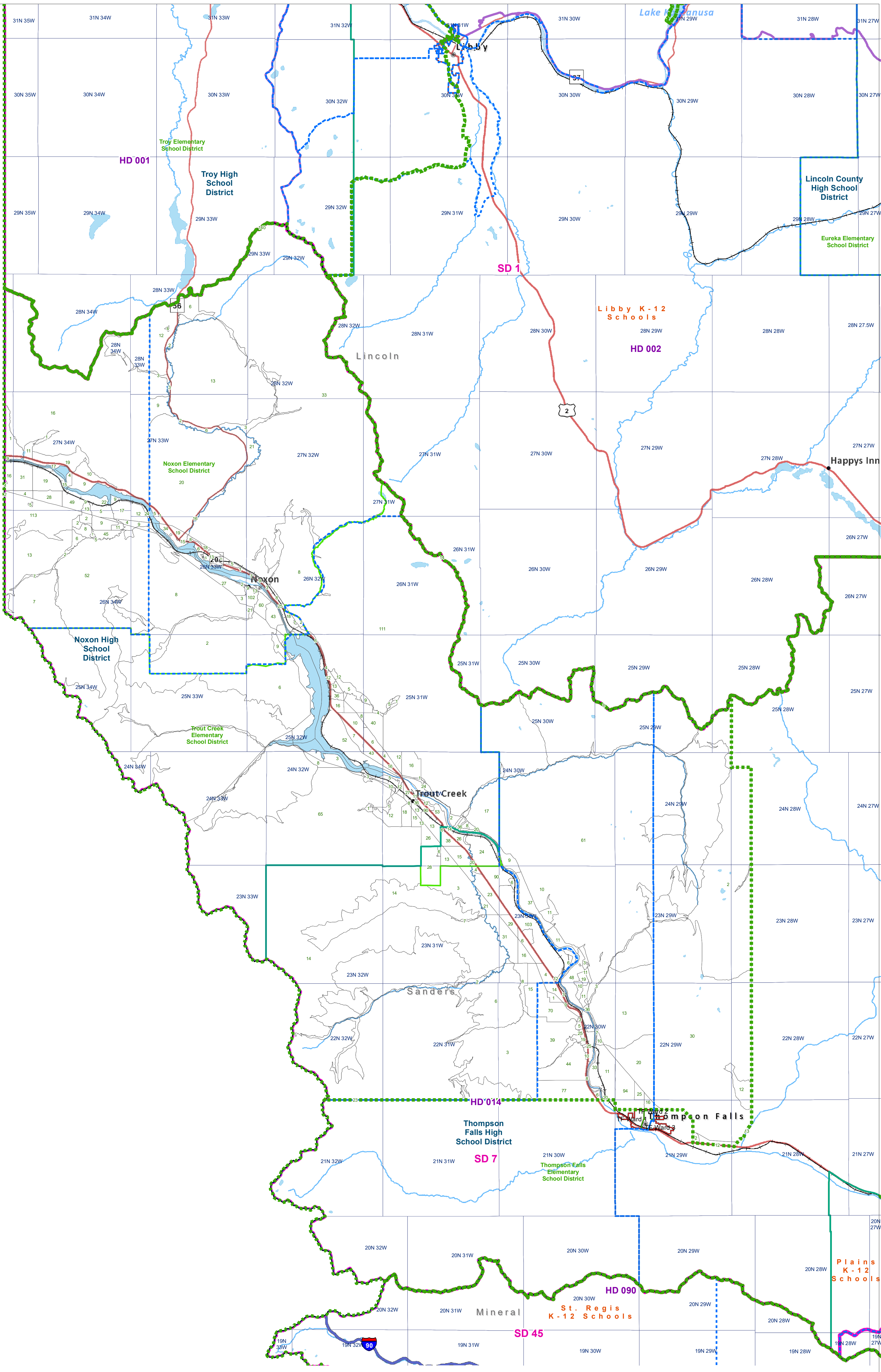
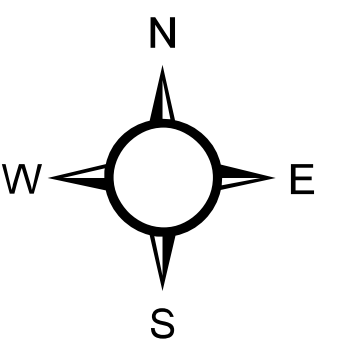


Sanders - 3  
 County Commissioner Districts with 2020 Census Blocks  
 Total Population: 4,000



- County Commissioner Districts
- Voting Precincts
- Secondary School Districts
- Incorporated Cities and Towns
- Township Boundary
- Senate
- Elementary School Districts
- Wards
- Tribal Nations Reservations
- House
- Unified (K-12) School Districts
- 2020 Census Blocks with Total Population Labeled



Voting Precincts  
 Montana State Library  
 Created on 3/9/2023  
 Meghan Burns | [GeoEnabledElections@mt.gov](mailto:GeoEnabledElections@mt.gov)  
<https://geoenabled-elections-montana.hub.arcgis.com/>