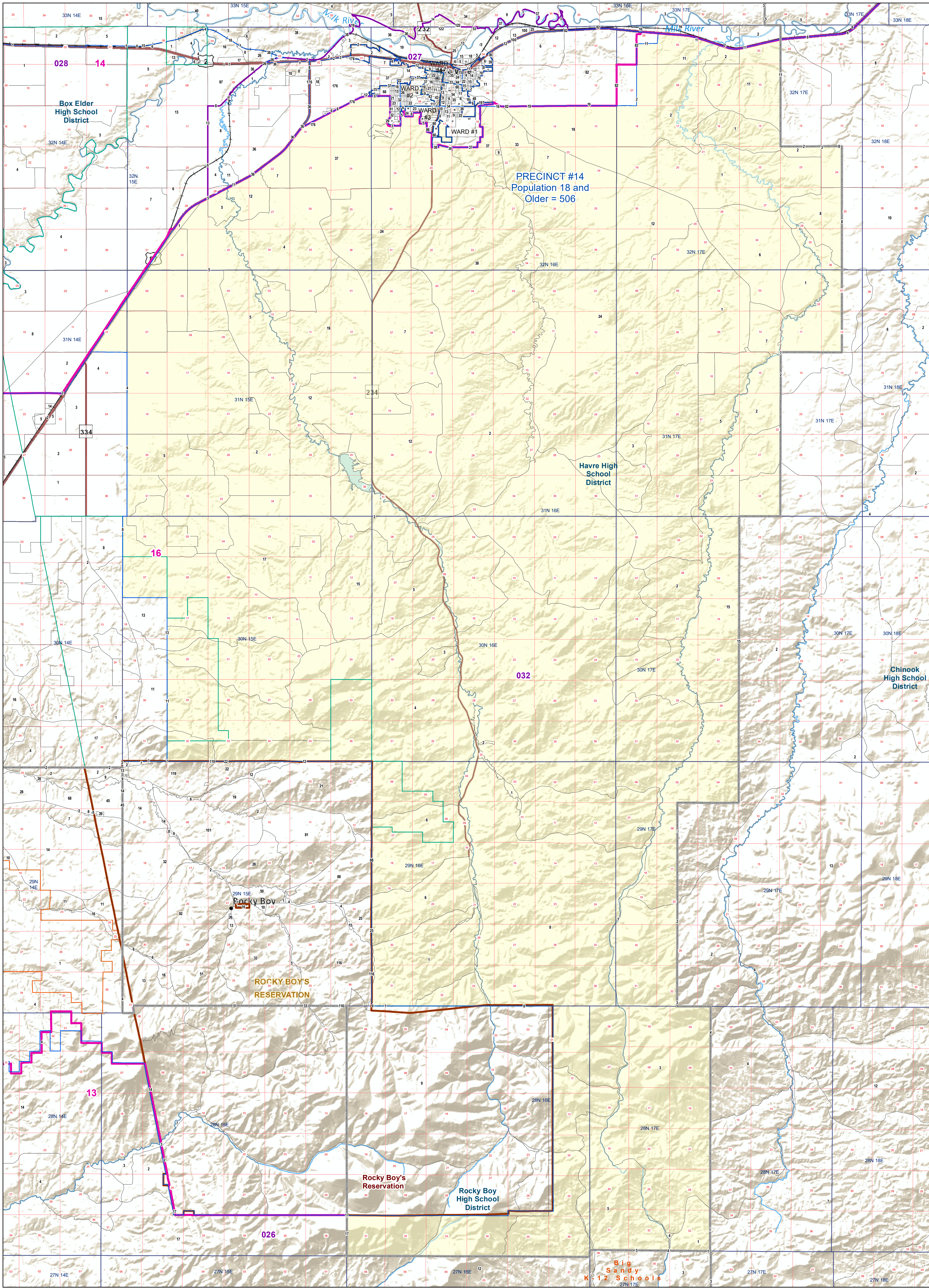
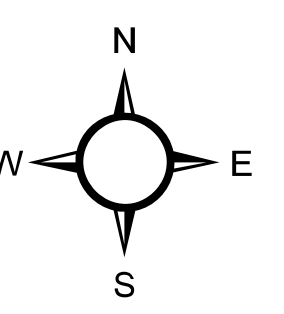


Hill County: PRECINCT #14

Voting Precincts and Legislative Districts



- Voting Precincts
- Senate
- House
- Incorporated Cities and Towns
- Wards
- Tribal Nations Reservations
- Unified (K-12) School Districts
- Secondary School Districts
- Elementary School Districts
- 2020 Census Blocks with Population 18 and Older Labeled
- Township Boundary
- Section Boundary



Voting Precincts
 Montana State Library
 Created on 3/12/2023
 Meghan Burns | GeoEnabledElections@mt.gov
<https://geoenabled-elections-montana.hub.arcgis.com/>