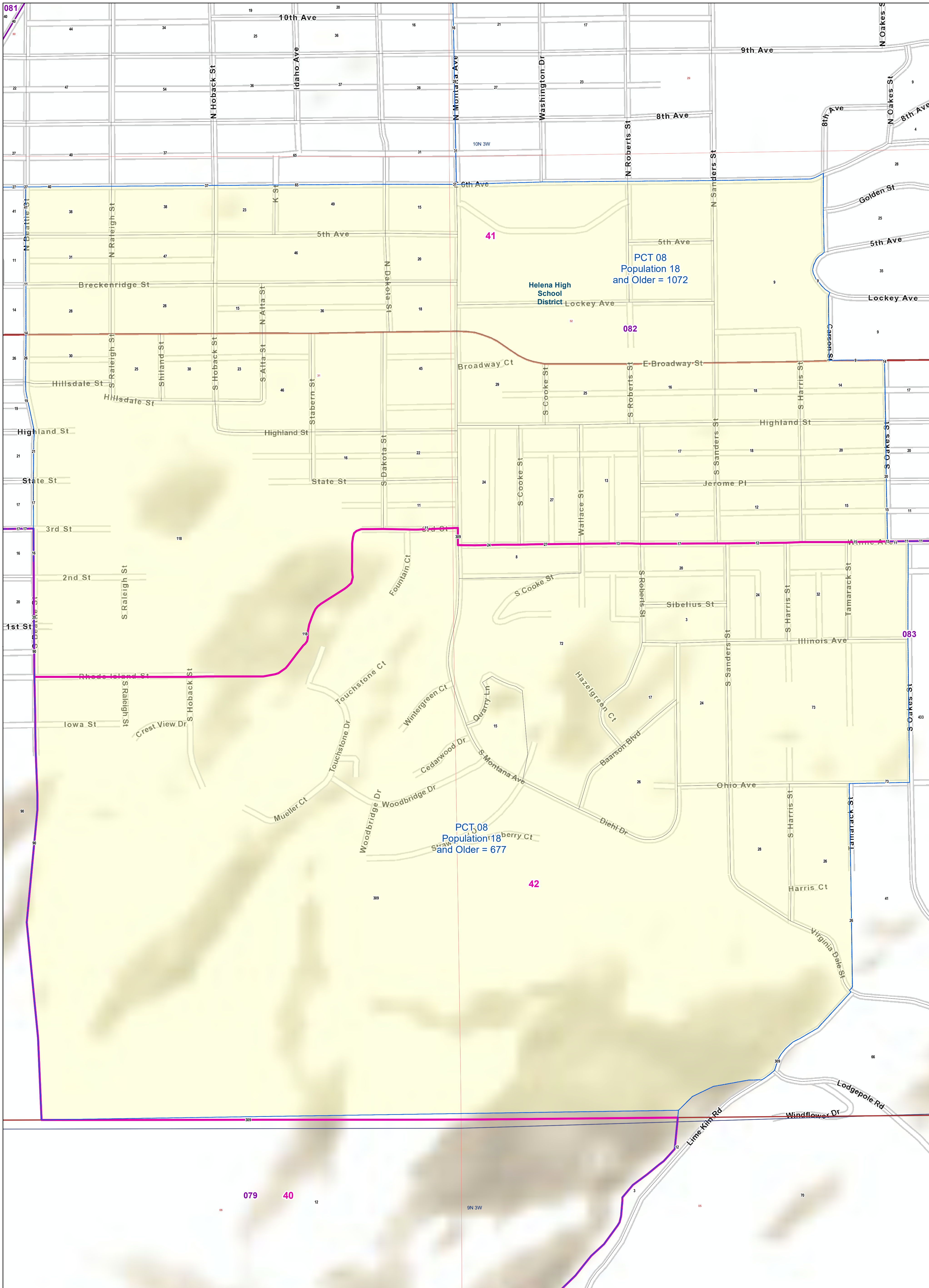
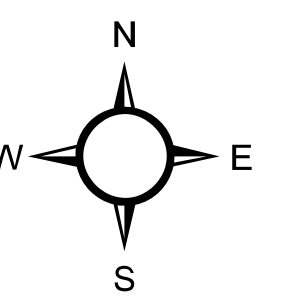


# Lewis and Clark County: PCT 08 Voting Precincts and Legislative Districts



- Voting Precincts
- Senate
- House
- Incorporated Cities and Towns
- Wards
- Tribal Nations Reservations
- Unified (K-12) School Districts
- Secondary School Districts
- Elementary School Districts
- 2020 Census Blocks with Population 18 and Older Labeled
- Township Boundary
- Section Boundary

