



**MONTANA
STATE LIBRARY**
A GREATER STATE OF KNOWLEDGE

MSDI Administrative Boundaries

Meghan Burns, MSDI Boundary Theme Lead

2024 Big Sky GeoCon | Thursday, April 18 @ 9:45am – 10:15 am

Outline

- NSDI Governmental Units, and Administrative and Statistical Boundaries and the National Boundaries Working Group
 - Background and Updates
- US Census Bureau Updates
 - Boundary and Annexation Survey (BAS)
 - School District Review Program (SDRP)
- MSDI Administrative Boundaries
 - General Updates
 - Geo-Enabled Elections and Redistricting
 - Upcoming Tasks

NSDI Governmental Units, and Administrative and Statistical Boundaries and the National Boundaries Group (NBG)

<https://ngda-gov-units-geoplatfrom.hub.arcgis.com/pages/national-boundaries-group>

National Boundaries Group

- Purpose: To develop and integrate nationally consistent boundaries with the goal to make sure federal boundary sources are consistent, accurate, and integrated.
- Meets Quarterly
 - Last Meeting 2/13/2024 (in person only at the Esri Federal GIS Conference)
 - Upcoming Meetings: June 12, September 18, December 11

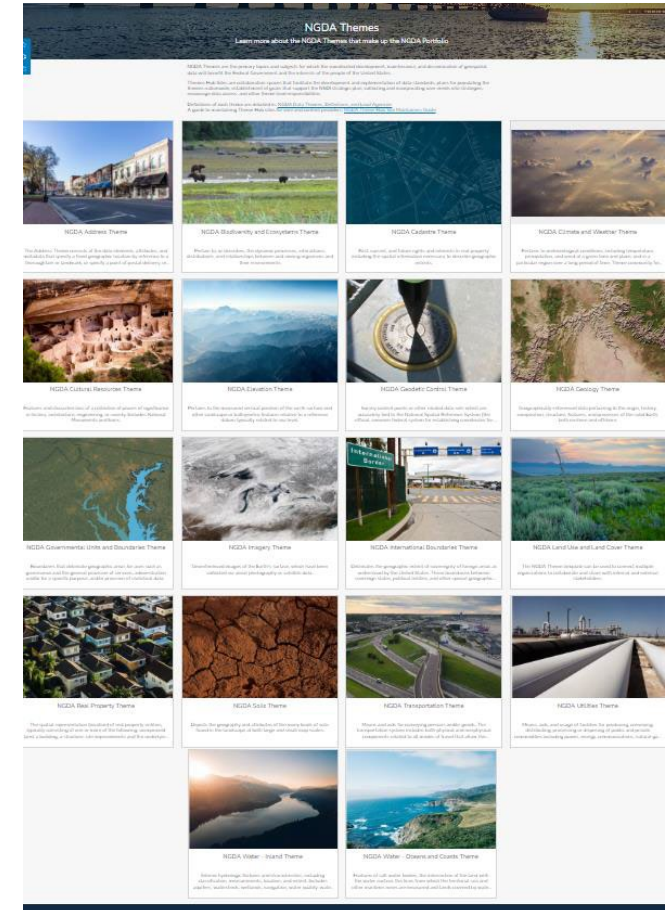
<https://ngda.gov-units-geoplatform.hub.arcgis.com/pages/national-boundaries-group>

National Spatial Data Infrastructure (NSDI)

- Executive Order 12906: Coordinating Geographic Data Acquisition and Access: The National Spatial Data Infrastructure, was signed by Bill Clinton April 11, 1994
- [EO 12906](#), Vol. 59, No. 71, pp.17671-17674, published April 13, 1994, established executive branch leadership for the development of the NSDI, and called for the development of the National Geospatial Data Clearinghouse, spatial data standards, and a Framework and partnerships for data acquisition.
- [EO 13286](#), Vol. 68 No. 43, pp.10619-10633, published March 5, 2003, amended EO 12906
- The NSDI was codified into law with the [Geospatial Data Act in 2018](#)

National Geospatial Data Asset (NGDA) Themes

- August 19, 2011: Revised original list of 34 NSDI Data Themes to 16 National Geospatial Data Asset (NGDA) Themes
- June 29, 2015: Framework indication added
- NGDA Theme Pages – NEW!
 - Address
 - Biodiversity and Ecosystems
 - **Cadastral***
 - Climate and Weather
 - Cultural Resources
 - **Elevation***
 - **Geodetic Control***
 - Geology
 - **Government Units, and Administrative & Statistical Boundaries***
 - **Imagery***
 - Land Use – Land Cover
 - Real Property
 - Soils
 - **Transportation***
 - Utilities
 - **Water – Inland***
 - **Water – Oceans and Coasts***



National Spatial Data Infrastructure (NSDI): Governmental Units, and Administrative and Statistical Boundaries

- Theme Lead: Dierdre Bevington-Attardi, US Census Bureau
- Purpose of Governmental Units Theme:

“The Governmental Units Theme of the National Spatial Data Infrastructure enables people to access, visualize, analyze, and integrate boundary data for official governmental units, administrative, and statistical areas as described by a consistent set of rules and semantic definitions, and reported/certified to the U.S. Census Bureau by responsible officials of international, tribal, federal, state, and local governments for purposes of reporting the Nation’s official statistics.”

Governmental Units Theme Page

FGDC.gov Governmental Units, and Administrative and Statistical Boundaries Theme

[NGDA Portfolio Community](#) [Overview](#) [Annual Reports](#) [Subcommittees & Working Groups](#) [Standards in Use](#) [Search Hub Site](#) [Search GeoPlatform](#) [Internal](#)

Governmental Units, and Administrative and Statistical Boundaries Theme

Theme Lead Agency: United States Census Bureau (US Census)

Theme Lead: Dierdre Bevington-Attardi (US Census)

Email: NGDATeam@FGDC.gov

Definition

Boundaries that delineate geographic areas for uses such as governance and the general provision of services (e.g., States, American Indian reservations, counties, cities, towns, etc.), administration and/or for a specific purpose (e.g., Congressional Districts, school districts, fire districts, Alaska Native Regional Corporations, etc.), and/or provision of statistical data (census tracts, census blocks, metropolitan and micropolitan statistical areas, etc.). Boundaries for these various types of geographic areas are either defined through a documented legal description or through criteria and guidelines. Other boundaries may include international limits, those of federal land ownership, the extent of administrative regions for various federal agencies, as well as the jurisdictional offshore limits of U.S. sovereignty. Boundaries associated solely with natural resources and/or cultural entities are excluded from this theme and are included in the appropriate subject themes.

Governmental Units Websites

- [TIGER/Line Geodatabases](#)
- [TIGER/Line Shapefiles](#)

Governmental Units National Geospatial Data Assets (NGDA)

An NGDA is defined as a geospatial dataset that has been designated by the FGDC Steering Committee and meets at least one of the following criteria:

- Used by multiple agencies or with agency partners such as State, Tribal and local governments;
- Applied to achieve Presidential priorities as expressed by OMB;
- Required to meet shared mission goals of multiple Federal agencies; or
- Expressly required by statutory mandate

The table below contains the **Governmental Units NGDA** derived from the **Official List of NGDA Endorsed by FGDC** with a link to the NGDA metadata in Data.gov and GeoPlatform.gov. The list includes the agency responsible for managing the NGDA.

This list is updated on an as needed basis. If you discover errors or if you have questions about NGDA, please contact the NGDATeam@fgdc.gov.

Governmental Units NGDA

34

Derived from the Official List of NGDA Endorsed by FGDC

Source:
[Governmental Units NGDA List](#)

Governmental Units: Community Hub Site Coming Soon!

Governmental Units Theme Community Hub site
<https://ngda-gov-units-geoplatform.hub.arcgis.com/>

New Web Applications and Gallery Cards for all Census Bureau NGDA Datasets—**COMING SOON!**

In development

Rural America: A Story Map

This story map contains interactive web maps, tables, information, and images to help explain how the Census Bureau defines "rural."

Interactive maps and story maps

USGS United States Census Bureau
science for a changing world

FGDC.GOV

NSDI: Governmental Units

- ➔ 57 Congressional Districts
- 58 ZCTAS
- 60 PUMAS
- 61 Urban Areas
- 62 Urban Growth Areas
- ➔ 63 VTD Voting Precincts
- ➔ 64 AIANNH Tribal Nations Reservations
- 65 AITS
- 66 ANRC
- 69 Block (Pop & Hou), 2020
- 70 Block Group
- 72 Census Tract
- 74 CSA
- 75 Consolidated Cities
- ➔ 76 County and Equiv
- 77 County Subdivision
- ➔ 78 Elem School District
- 80 Estates
- 81 HUD Entitlement Grantee Jurisdiction
- 82 U.S. and Mexico
- 83 Metro Division
- 84 CBSA
- ➔ 88 Places
- ➔ 89 Sec School Districts
- ➔ 90 States and Equiv
- ➔ 91 SLD Lower Legislative: Senate/House
- ➔ 92 SLD Upper
- 93 Subbarrios
- 94 Tribal block groups
- 95 Tribal census tracts
- ➔ 96 Unified School District K-12
- 97 U.S. and Canada
- 186 BLM Admin Bdys and Points
- 202 School District AA
- **NEW Proposal: U.S. International boundaries with Canada and Mexico**

<https://ngda-gov-units-geoplatform.hub.arcgis.com/datasets/geoplatform::governmental-units-ngda-list/explore>

US Census Bureau Updates



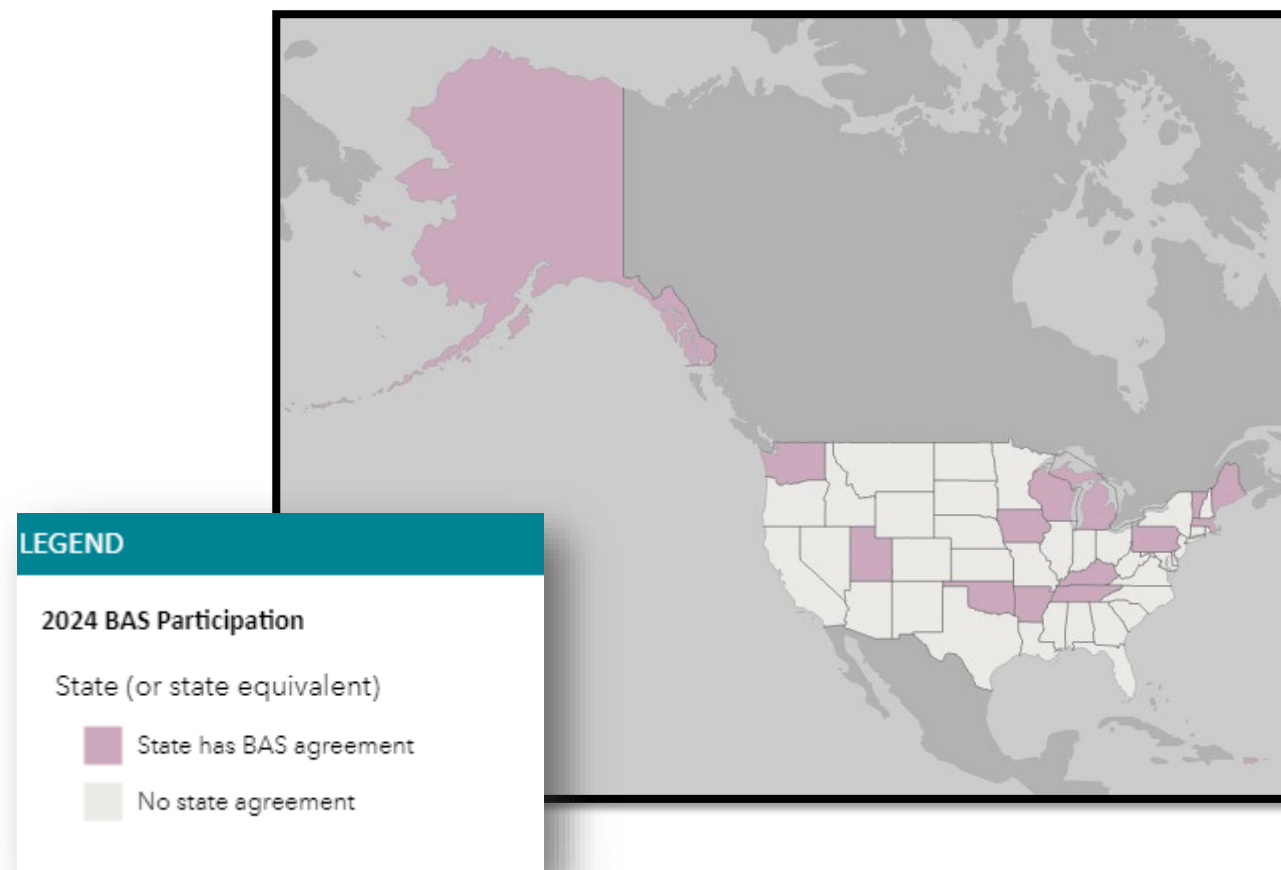
Boundary and Annexation Survey (BAS)

- Annual Program to submit Boundary Corrections and Annexations
- Schedule
 - January 1: Changes must be legally in effect on or before this date
 - March 1: Submit your changes to be reflected in ACS/PEP
 - May 31: Deadline to submit changes to be included in next year’s BAS material
- All Places (Cities, Towns, Counties) are asked to participate
- Survey Response Options
 - No Changes: Submit Online Form
 - Boundary Update Options:
 - BAS Partnership Toolbox (using ArcMap or ArcGIS Pro)
 - GUPS (Census provided software)
 - Paper BAS (Use map sheets provided by Census)
 - **New Web-based Update Process Coming!**

Even if you do not have any changes, please respond to the survey with “No Changes” and review and update your contact information

BAS Participation Map

- Montana does not have a State BAS agreement



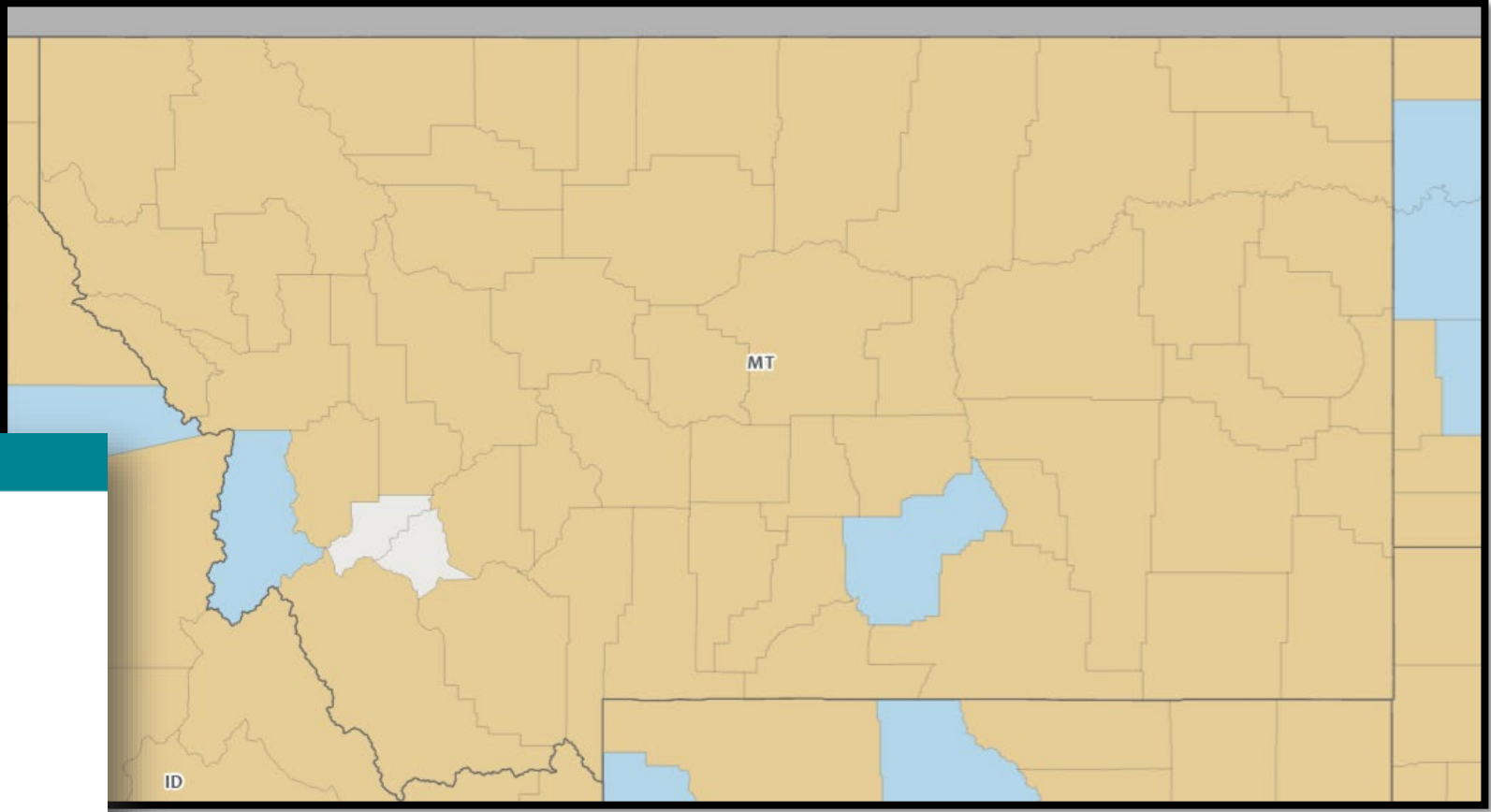
BAS Participation Map by County

LEGEND

2024 BAS Participation

County (or county equivalent)

- Responds for self
- County has CBAS agreement
- County responds for MCDs
- In state agreement
- Consolidated or inactive government







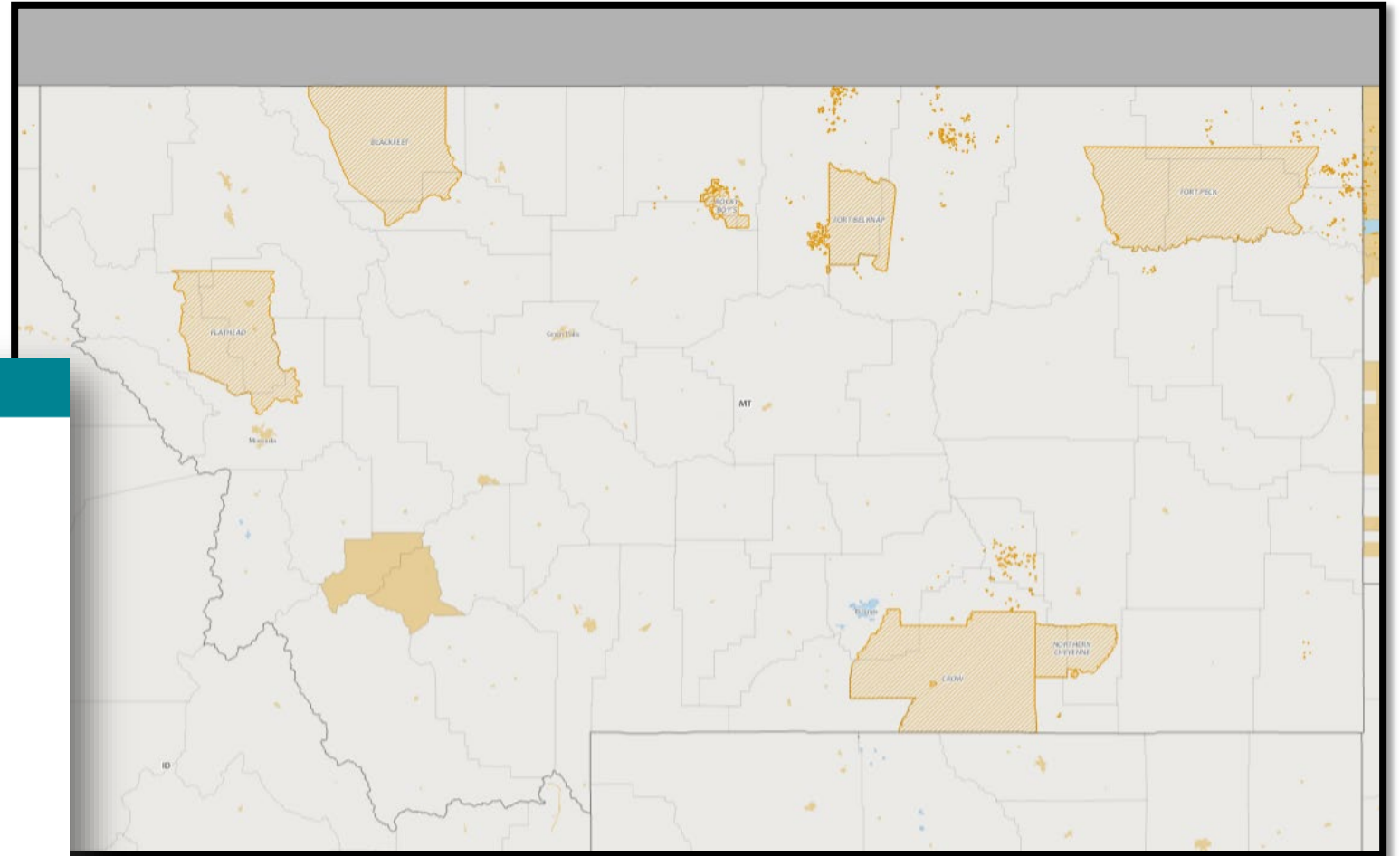
BAS Participation Map by City or Tribal Nation

LEGEND

2024 BAS Participation

Place, Minor Civil Division (MCD), and Tribal

-  Responds for self (tribal)
-  Responds for self (non-tribal)
-  In state agreement
-  In CBAS agreement
-  Consolidated city responds for MCDs
-  Partial CBAS agreement
-  Area outside place, MCD, or tribal government



School District Review Program (SDRP)

- Annual Program to verify and update:
 - School District Boundaries
 - Names
 - Grade Levels
- Schedule
 - June: Designate a School District Mapping Coordinator (I have been serving as the Coordinator)
 - September: School District Mapping Coordinator receives instructions and materials
 - September – December: Reach out to OPI and County School Superintendents for updates
 - **December 31: Deadline for Mapping Coordinator to submit changes to the US Census Bureau**
 - April: Verification Phase to be performed by Mapping Coordinator (Just Completed)

New Web-based Update Process Coming!

MSDI Boundary Updates

<https://msl.mt.gov/GIS/Boundaries>

MSDI Boundary Theme Layers - Core

- State
- County
- Incorporated Cities/Towns
- Congressional
- Legislative Districts (House and Senate)
- Voting Precincts
- Tribal Nations Reservations and Off Reservation Trust Land
- School Districts (Elementary, High School, K-12)
- Weed Management Districts
- Tax Increment Financing Districts
- Fire
- Soil Conservation
- National Park Boundaries
- Managed Areas

MSDI Boundary Theme Layers – Election Districts

- Ambulance/EMS
- Cemetery
- City
- Community Council
- Congressional
- County Commissioner
- County
- Fire
- House District
- Irrigation
- Judicial
- Jury
- Library
- Mosquito
- Park and Recreation
- Public Hospital
- Public Hospital Public Service Commission
- Resort
- Rural
- Rural Improvement
- School
- School Single Member Trustee
- Senate District
- Sewer
- Soil Conservation
- Special
- State
- Study Commission
- Supreme Court Justice
- Transportation
- Voting Precinct
- Ward
- Water

MSDI Boundary Update Summary

- Data Layers Published Monthly
- New Maps in the Map Gallery
- Geo-Enabled Election Information Hub

Data Layer Updates

- Election Districts are current as of April 1
 - Available for download from FTP April 1
 - Web Services were updated April 15
- Incorporated Places:
 - 2022 and 2023 US Census BAS Annexations added
- Tax Increment Financing Districts updated for 2023
- School Districts:
 - FY2022-2023 Enrollment
 - S H Elem dissolved into S Y Elem (Custer County)
- Weed Districts: Contact Info updated

Map Gallery Updates



Enter search terms

Grid Date Modified Filter

Items: 34



Montana Geo-Enabled Elections

Hub Site Application
Updated: Apr 1, 2024

An ArcGIS Hub site describing the implementation of Geo-enabled Elections in Montana through a partnership between the Montana Secretary of State's Office and the Montana State Library

[View item details](#)



Montana Legislative (2024-2032) and Public Service Commission Districts by City

Document Link
Updated: Apr 1, 2024

This is a large format map of Montana's Legislative Districts adopted in 2023 for the 2025 through 2033 legislative sessions and the current Public Service Commission Districts by City

[View item details](#)



Montana Legislative (2024-2032) and Public Service Commission Districts

Document Link
Updated: Apr 1, 2024

This is a large format map of Montana's Legislative Districts adopted in 2023 for the 2025 through 2033 legislative sessions and the current Public Service Commission Districts

[View item details](#)



Montana School Districts Enrollment - Fall 2021

Document Link
Updated: Mar 14, 2024

Statewide school district map displaying Montana's elementary, high school, and unified school districts, Fall 2021

[View item details](#)



Montana School Districts Enrollment FY2022-2023

Document Link
Updated: Mar 14, 2024

Statewide school district map displaying Montana's elementary, high school, and K-12 school districts, FY 2022-2023

[View item details](#)



Montana Legislative Districts, 2004-2013

Document Link
Updated: Mar 14, 2024

Legislative Districts Static Maps

[View item details](#)



Montana Voting Precinct Analysis GIS Data Layers

Document Link
Updated: Mar 14, 2024

Montana Voting Precinct Analysis GIS Data Layers including 2020 Census 18 and Older Population Numbers and the current (2014-2022) and new Legislative House and Senate Districts (2024-2032)

[View item details](#)



Montana Libraries and Legislative Districts

Web Mapping Application
Updated: Dec 28, 2023

Montana Libraries and Legislative Districts application

[View item details](#)



Montana Schools and School Districts

Web Map
Updated: Dec 28, 2023

This Interactive Map represents Montana School District Boundaries (Elementary, Secondary, & K-12), and Public and Non-Public K-12 Schools Accredited by the Montana Board of Public Education. [Note: Zoom in to view the school locations. Click on a sc...

[View item details](#)



Montana Schools and School Districts Swipe Map

Web Mapping Application
Updated: Dec 28, 2023

Elementary, Secondary (High School), and Unified (K-12) School Districts within Montana

[View item details](#)



Montana Administrative Boundaries

Web Map
Updated: Dec 28, 2023

This maps represents Montana counties, incorporated cities & towns, TIFDs, reservations, school districts, and state boundary.

[View item details](#)



Montana Managed Areas

Web Map
Updated: Dec 28, 2023

Montana Managed Areas with Public Lands, Conservation Easements, and Parcels

[View item details](#)



Montana Administrative Boundaries

Instant App
Updated: Oct 17, 2023

Interactive web map application of MSDI Administrative Boundaries

[View item details](#)



Montana Legislative Districts, 2024-2032

Document Link
Updated: Jul 4, 2023

This is a large format map of Montana's Legislative Districts adopted in 2023 for the 2025 through 2033 legislative sessions

[View item details](#)



Montana Legislative Districts, 2024-2032, by City

Document Link
Updated: Jul 4, 2023

This is a large format map of Montana's Legislative Districts adopted in 2023 for 35 Montana Cities and Towns

[View item details](#)



Montana Legislative Districts 2014-2023 by City

Document Link
Updated: Jul 4, 2023

Montana Legislative Districts 2014-2023 for 36 Montana Cities and Towns

[View item details](#)



Geo-Enabled Elections



Geo-Enabled Elections

All 56 Counties have been updated in the Election System and are ready for the upcoming Elections!

Congratulations Counties!
Awesome Job!

Redistricting Timeline

From the Constitution – Article V. Part V. The Legislature, Section 14:

- Following a federal decennial census new Congressional and Legislative Districts must be redrawn: <https://mtredistricting.gov/>
 - Within 90 days after the official final decennial census figures are available, the commission shall file its final plan for congressional districts with the secretary of state and it shall become law
 - November 12, 2021: The Congressional Districts were adopted:
 - The commission shall submit its plan for legislative districts to the legislature at the first regular session....
 - February 23, 2023: Legislative House & Senate Districts were adopted
- MCA 13-3-102: Once redistricting is complete each county now has **90 days** to review their Voting Precincts to make sure they conform to the new legislative districts. Precincts should equalize the number of electors as nearly as possible
- MCA 7-4-2102: County Commissioner Districts should also be reviewed to be as compact and equal in population and area as possible following a decennial census

The Hub Site has Redistricting Info:

<https://geoenabled-elections-montana.hub.arcgis.com/pages/redistricting>

Elections Timeline

- MCA 13-3. Precincts and Polling Places
 - MCA 13-3-102: No changes may be made within 100 days of an election
 - No changes can be made between the primary and the general election
 - MCA 13-3-103:
 - (1) Not more than 10 days after an order of the governing body has established or changed the boundaries of an election precinct, the governing body shall ensure that a written legal description and a map showing the borders of all precincts and districts in which elections are held within the county are prepared and delivered to the election administrator.
 - (2) Not more than 10 days after school district or other election district boundaries have been changed, the governing body making the change shall certify any changes or alterations in the boundaries to the election administrator and deliver a written legal description and a map showing boundaries of the wards, school districts, or other election districts. The map must be sufficiently detailed to clearly identify the wards or districts and the territory included in each.
- MCA 7-4-2102: Division of County into Commissioner Districts
 - A change in the boundaries of any commissioner district may not be made between the date that falls 6 months before a county commissioner primary election and the date of the general election.

Election System Division of Responsibilities

–Secretary of State

- Update Statewide Election Districts including:
 - Congressional Districts
 - Legislative Senate/House Districts
 - Public Service Commission
 - Judiciary
- Uploads Precinct Split Map

–Election Administrators

- Add/Update Precincts, Precinct Splits, and Election District Names
- Review and approve Precinct Split Map

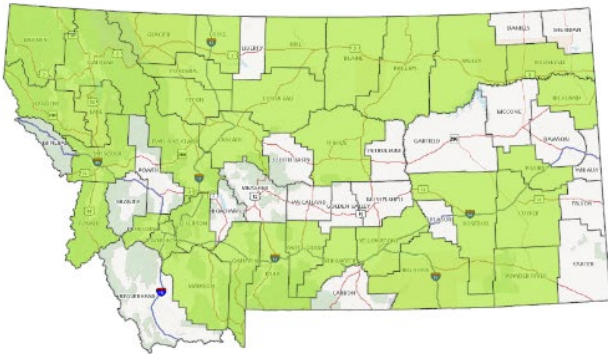
–Montana State Library

- Works with Election Administrator to create Precinct Split boundary data layer
- Send Precinct Split layer to SOS for them to upload
- Update and send ancillary data layers: County, City, School Districts, Zip Code (from US Census Bureau) for SOS to upload

Geo-Enabled Elections - Redistricting

- Voting Precincts: 34 counties
- County Commissioner Districts: 22 counties to-date

2023 Redistricting Summary

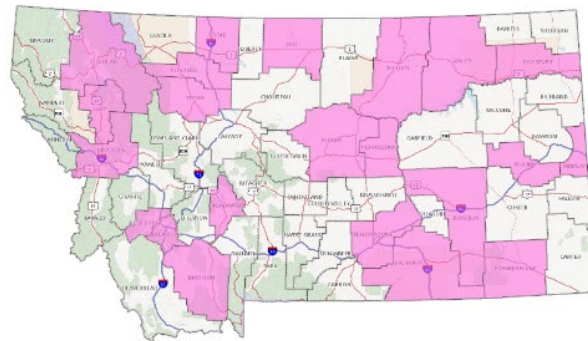


Voting Precinct Updates

Following the redistricting of the Montana Legislative Districts, thirty-four (34) counties revised their Voting Precincts to conform to the new House and Senate Districts.

County Commissioner Districts

As of April 1, 2024, twenty-two (22) counties have revised their County Commissioner Districts to ensure that the districts are as compact an equal in area and population as possible following the 2020 decennial census.



Geo-Enabled Elections

- Hub Updated with
 - Election Dates
 - Related Laws
 - Links to the Map Gallery
 - Links to the latest data & services
 - Updated Precinct Splits
 - 2023 Redistricting Summary



Upcoming Tasks



Upcoming Tasks

- Adjust Boundary Data Layers to the Latest CadNSDI published 2/2024
- Update Managed Areas with the latest from USGS Protected Areas Database (PAD-US) once it is released
- Migrate Esri Managed Web Services to ArcGIS Online Feature Services
- Replace the Data List with a new Open Data Hub Site
- Schedule MSDI Boundary Working Group Meeting

Thank you!



Contact Info:

Meghan Burns
MSDI Boundary Theme Lead
mburns2@mt.gov
(406) 444-1550
<https://msl.mt.gov/GIS/Boundaries>

