



Q1. Describe the aerial imagery your organization has and how it is made available

City of Missoula



List the imagery:

- 2023 color imagery of Missoula valley – 3" leaf-off
- 2020 color imagery of Missoula valley – 3" leaf-off
- 2014 color imagery of Missoula Valley – 6" leaf-off
- 2004, 2002 color imagery of Missoula Valley – unk resolution

How is imagery made available:

- 2023 & 2020 are available via web service
 - Can be shared as native files via a cloud-share site with minimal effort on our part
- 2014, 2004, 2002 are available for internal use (DB direct connection)

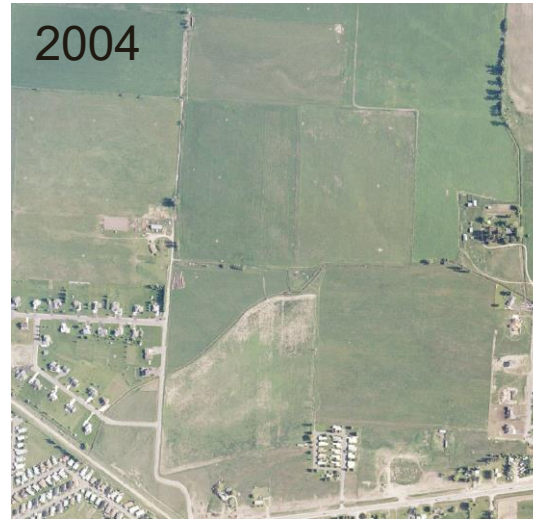
Q1cont.



Q2. What are your top 2 to 3 business uses for imagery?

Top business uses:

1. Public Works Project Research & Planning
2. Parks & Recreation
3. Growth Visualization



Q3. What are your organization's challenges with imagery (top 2 to 3 pain points)?

1. Acquisition window: Leaf-off imagery is very important to us
2. Size of file/service: Trouble loading it to AGO
3. Cost of acquisition & justification to City Council when they see imagery in Google Maps for free

Q4. What would you want to see out of a state imagery program (your vision)?

- A patchwork of various agency's photography into one cohesive easily-obtained image; with the understanding that there will be differences in areas due to financial or practical reasons.
- Not interested in a single acquisition approach as we all have varying needs regarding vegetation.

Thank you!

