



VEXCEL
DATA PROGRAM

**Better Answers Now
Not Later**
Prioritizing Workflows w/ AI/ML
on Aerial Imagery

Mark Davis
General Manager
Vexcel Government Solutions
Mark.Davis@Vexcelgroup.com

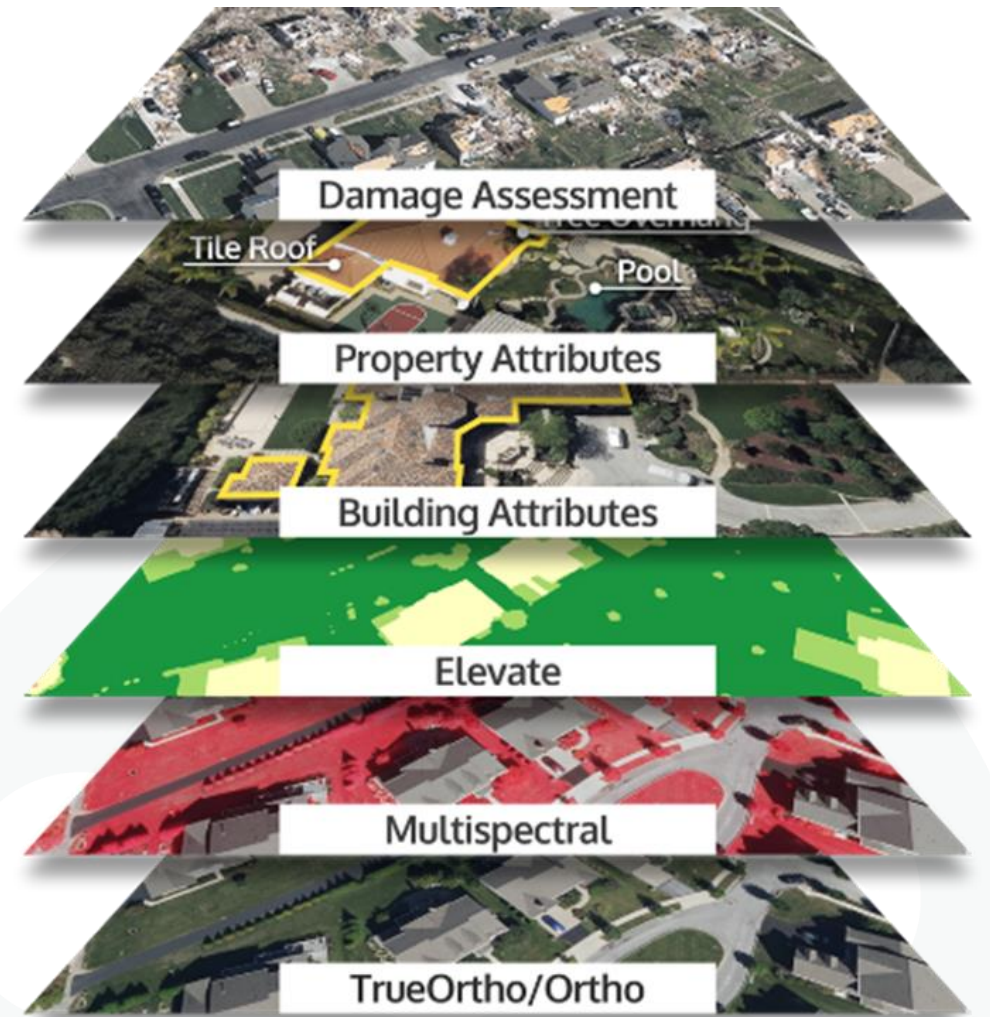


Agenda

- Trends in Aerial Imagery
- Imagery “Stack” and Coverage
- Extracting Insights
- High Impact Use-Cases

No silver bullet
and

Understanding needs will drive
selection process

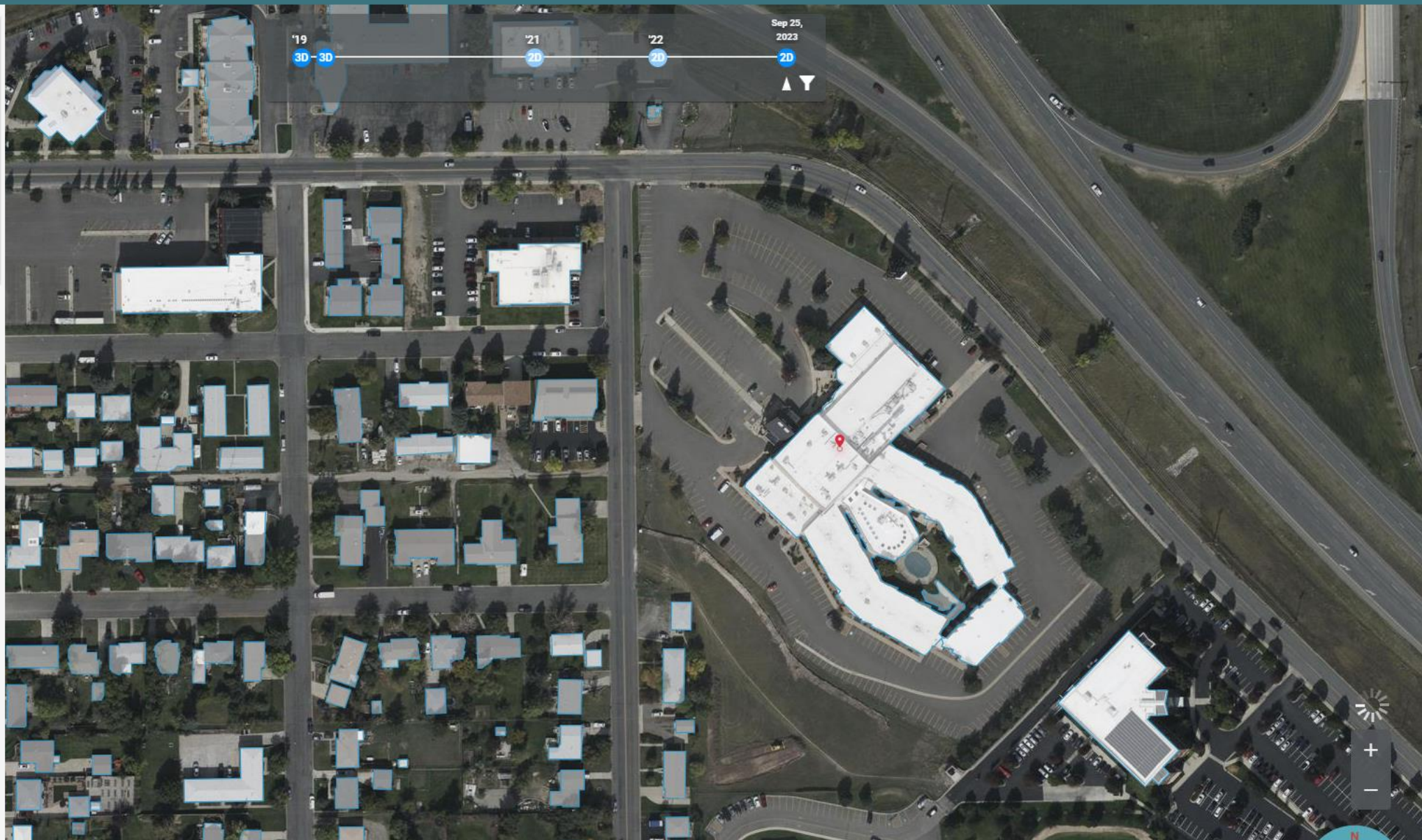




2301 Colonial Dr, Helena, MT 59601, USA
46.588802, -111.998483
25-SEP-2023 02:02 PM MDT
[Open image gallery](#)

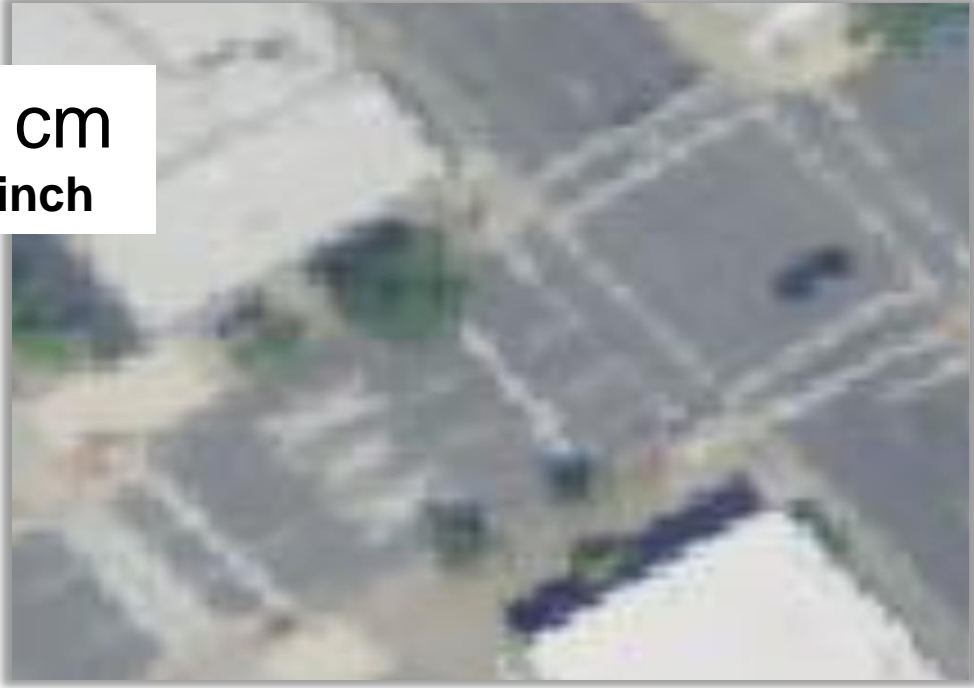
Elements

- Property Info
- Damage Assessment
- Property Report (PDF)



Growing Utilization of High-Resolution Imagery & Analytics

60 cm
24 inch

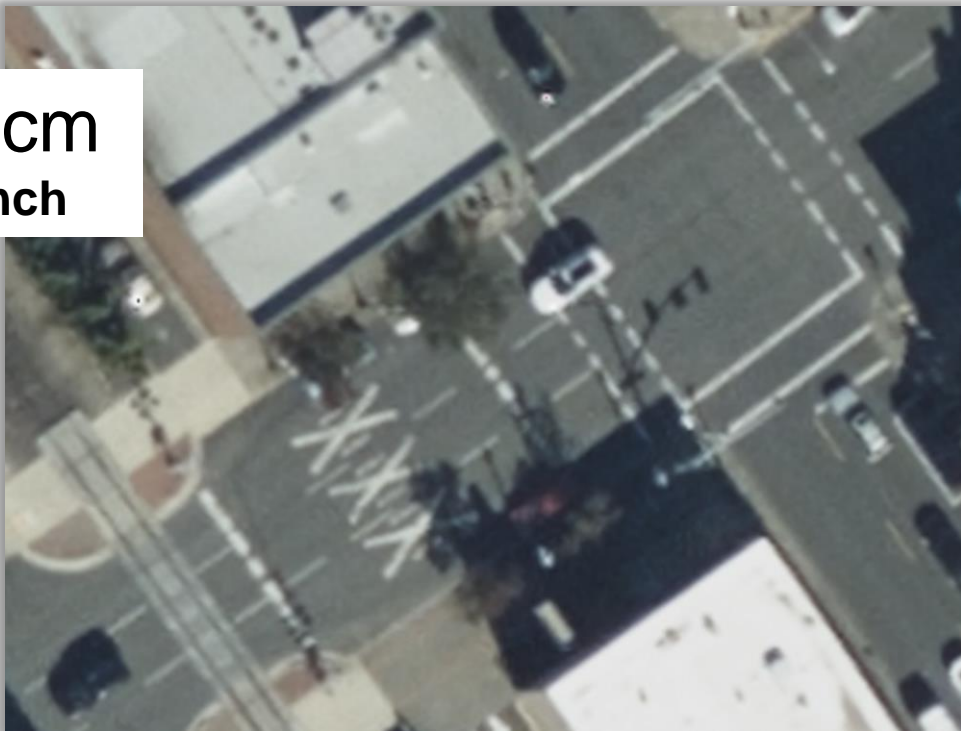


30 cm
12 inch

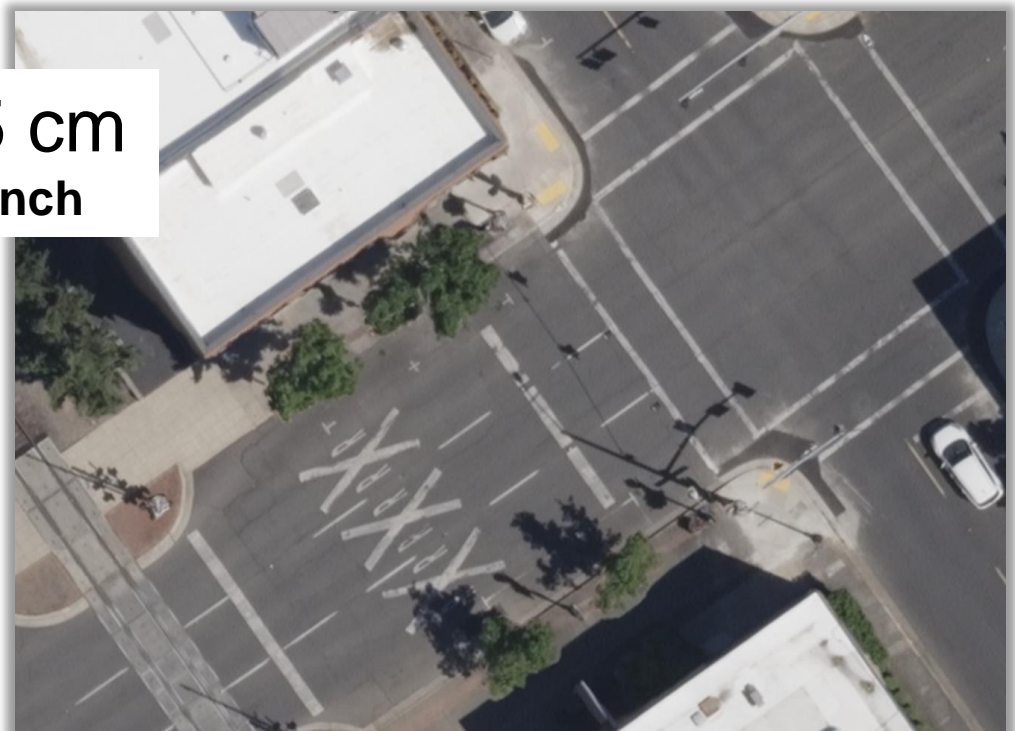


NAIP

15 cm
6 inch



7.5 cm
3 inch



Vexcel

About Vexcel

30 years of photogrammetric excellence

Aerial content across 30 countries

Data histories back to 2016

Growing AI/ML library (w/80+ features)

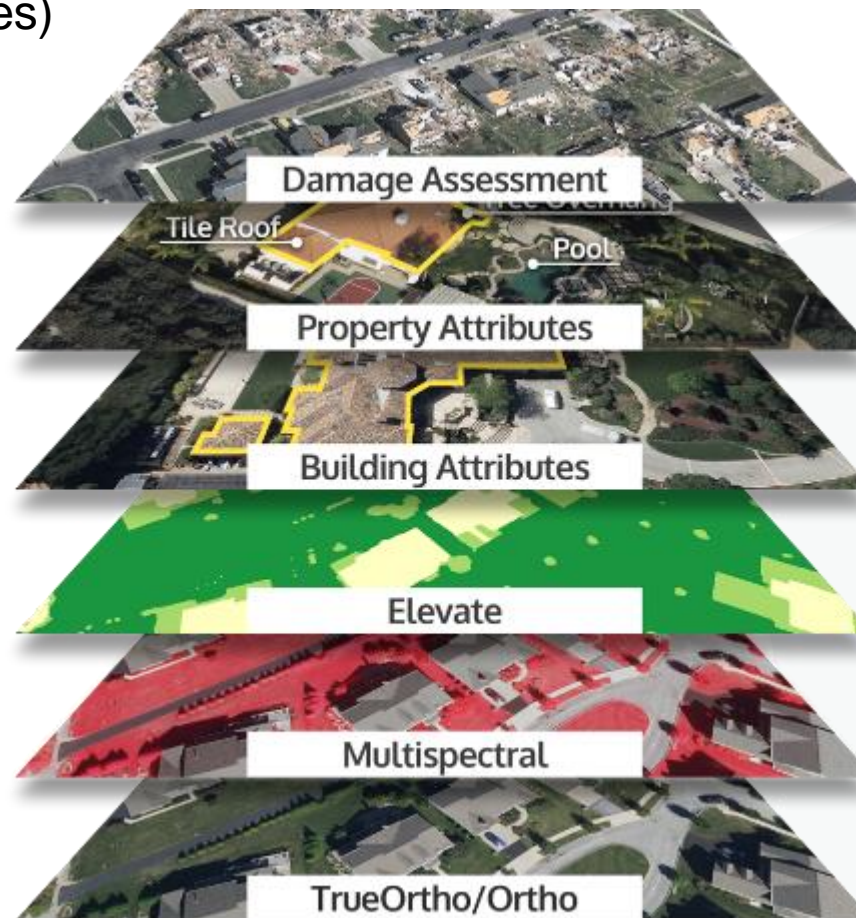
Vexcel Fleet



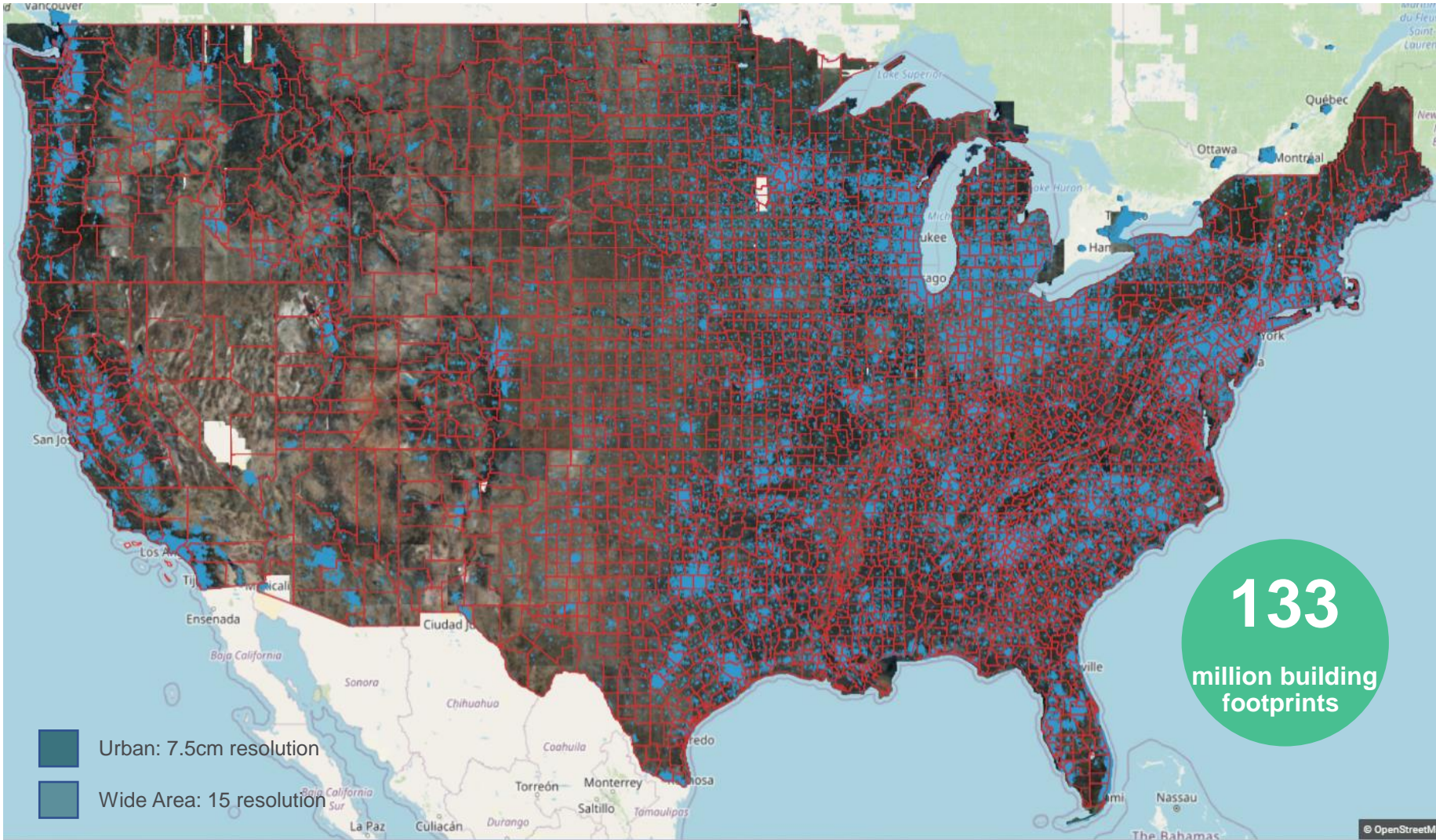
Vexcel Imaging



Vexcel Data Program



Existing U.S. Footprint: 3 million sq mi



Largest collection of its kind with:

- ✓ Unmatched accuracy
- ✓ High-resolution aerial imagery
- ✓ Consistency across imagery



49 states



Urban & rural collections

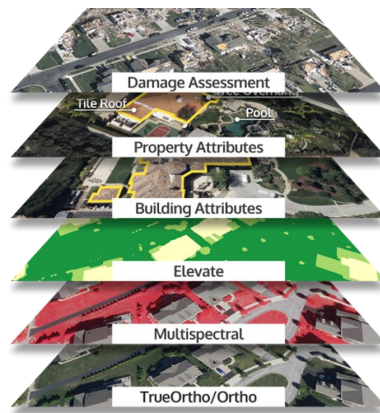
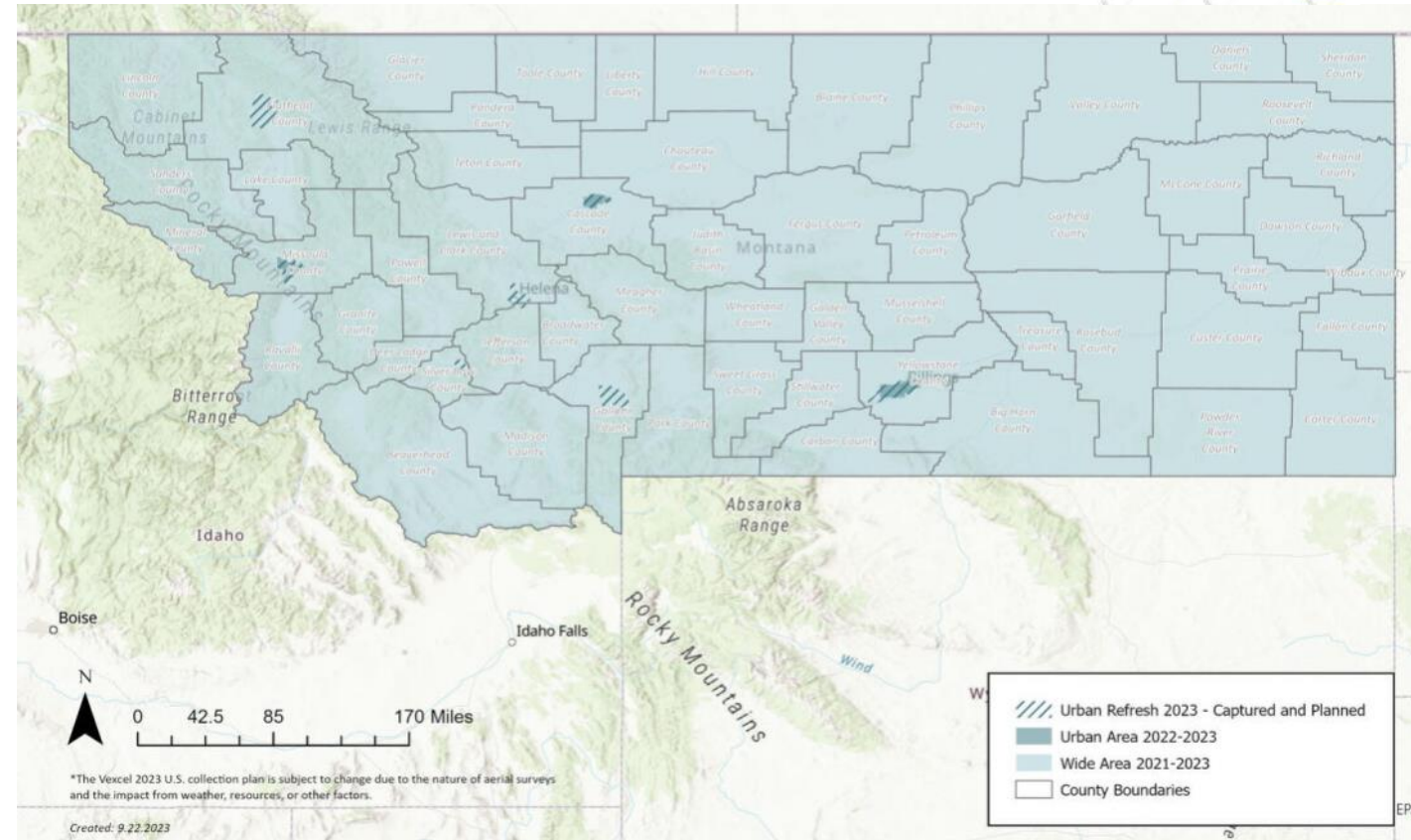
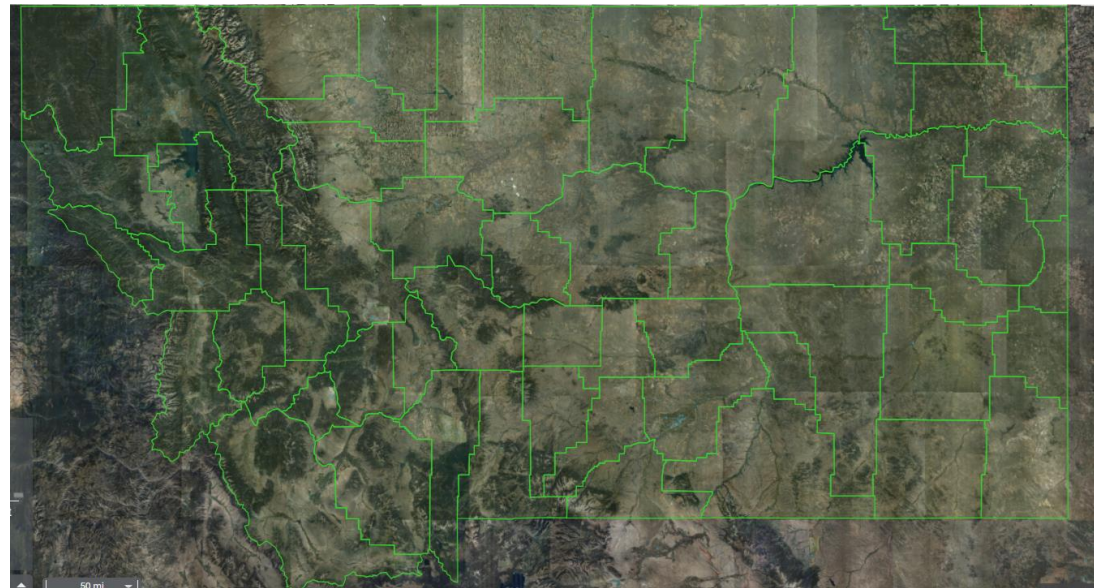


99.6% U.S. population



127 million U.S. households

Current and Historical Imagery & Analytics across Montana



Urban imagery collected 2X per year: 3 inch, 4 Band Ortho, Obliques & DSM/DTMs
Statewide imagery collected 1X per 2 years: 6 inch, 4 Band Orthos & DSMs



Imagine if you could prioritize top issues across your entire State

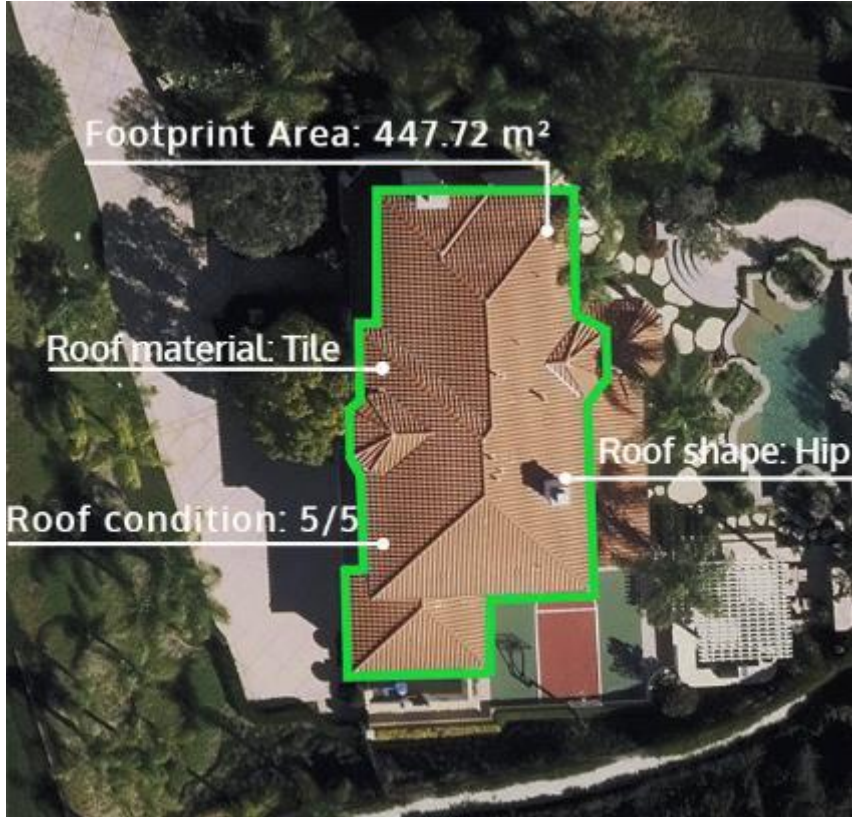


Overlays 500 ft

Final Ortho © OpenStreetMap contributors. © Vexcel Imaging US Inc. Image Date May 4th, 2023 26.920268, -82.216653



Feature Extractions: Infrastructure, Roadway, Building & Property Elements



Building Attributes

- 20+ building and structure attributes
- Available for current and historic imagery



Property Attributes

- 20+ attributes, including footprint area, roof condition, solar panels, and pools
- Available for current and historic imagery

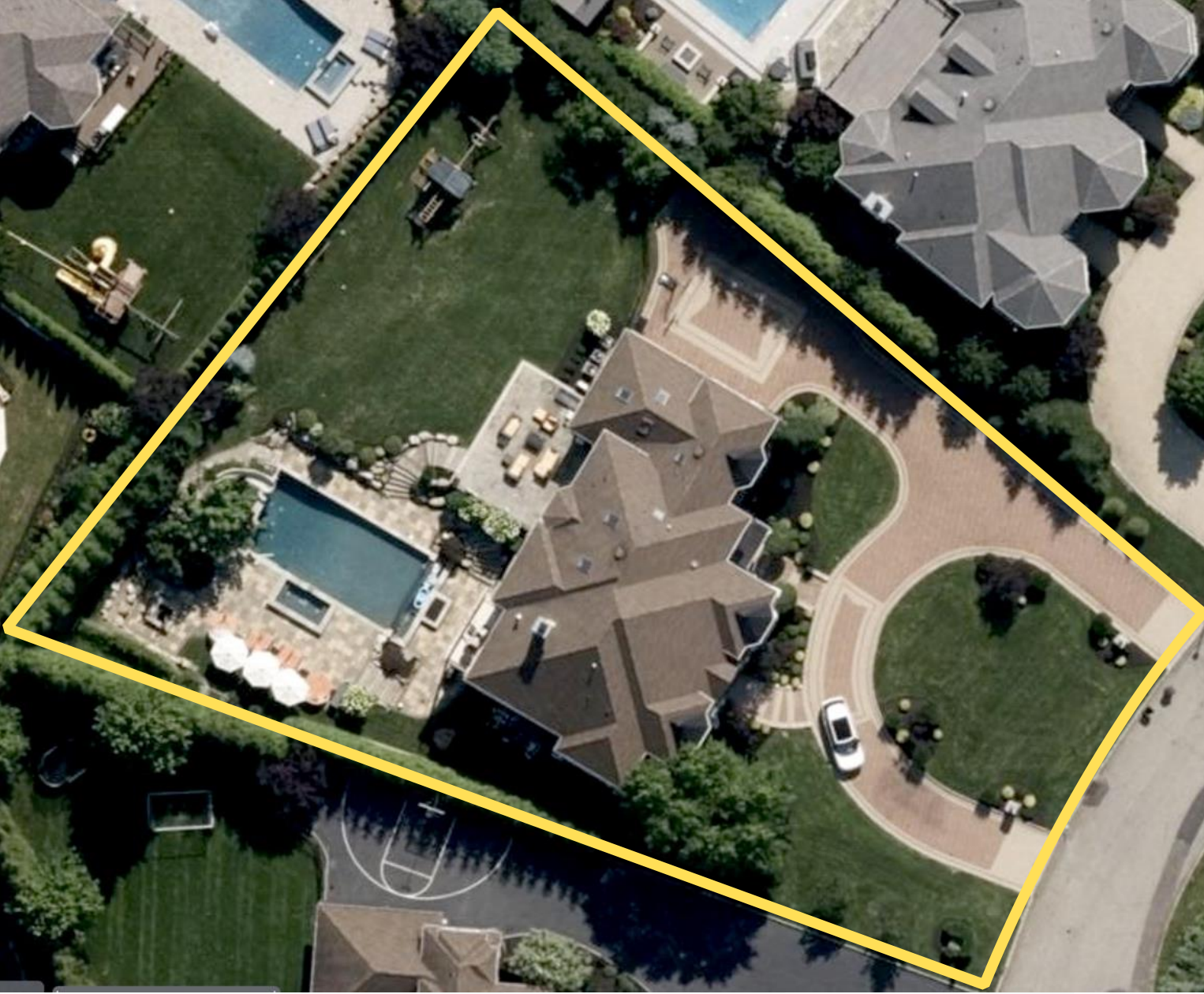


Damage Assessment

- Post-disaster analysis on impacted properties
- Available for all Gray Sky collection from 2022 and forward



Building Attributes	Value
Footprint area	4,626.65ft ²
Ground elevation	527.03 ft
Roof elevation	553.08 ft
Roof height	28.15 ft
Roof Centroid	-74.287889 40.800163
Tree cover over roof	0%
Roof solar	No
Chimney(s)	1
AC unit(s)	0
Roof vent(s)	11
Satellite dish(es)	0
Skylight(s)	6
Roof shape	Hip
Roof material	Shingle
Missing roof material	0%
Roof condition	4/5
Roof discoloration	1.35%
Vent staining	No – 0%
Algae staining	No – 0%
Water pooling	No – 0%
Roof tarp	0%
Debris	0%



Property Attributes	Value
Pool	Yes – 1013.96 ft ²
Pool: In ground-area	Yes – 908.04 ft ²
Pool: Above ground	No - N/A
Hot tub – area	Yes – 106.99 ft ²
Diving board	No
Water slide	Yes
Deck	Yes
Playground	Yes
Trampoline	No
Sports court	No
Hardscapes	Yes – 5898.62 ft ²
Vehicles: automobile	1
Vehicles: boat	0

Primary Defensible Space



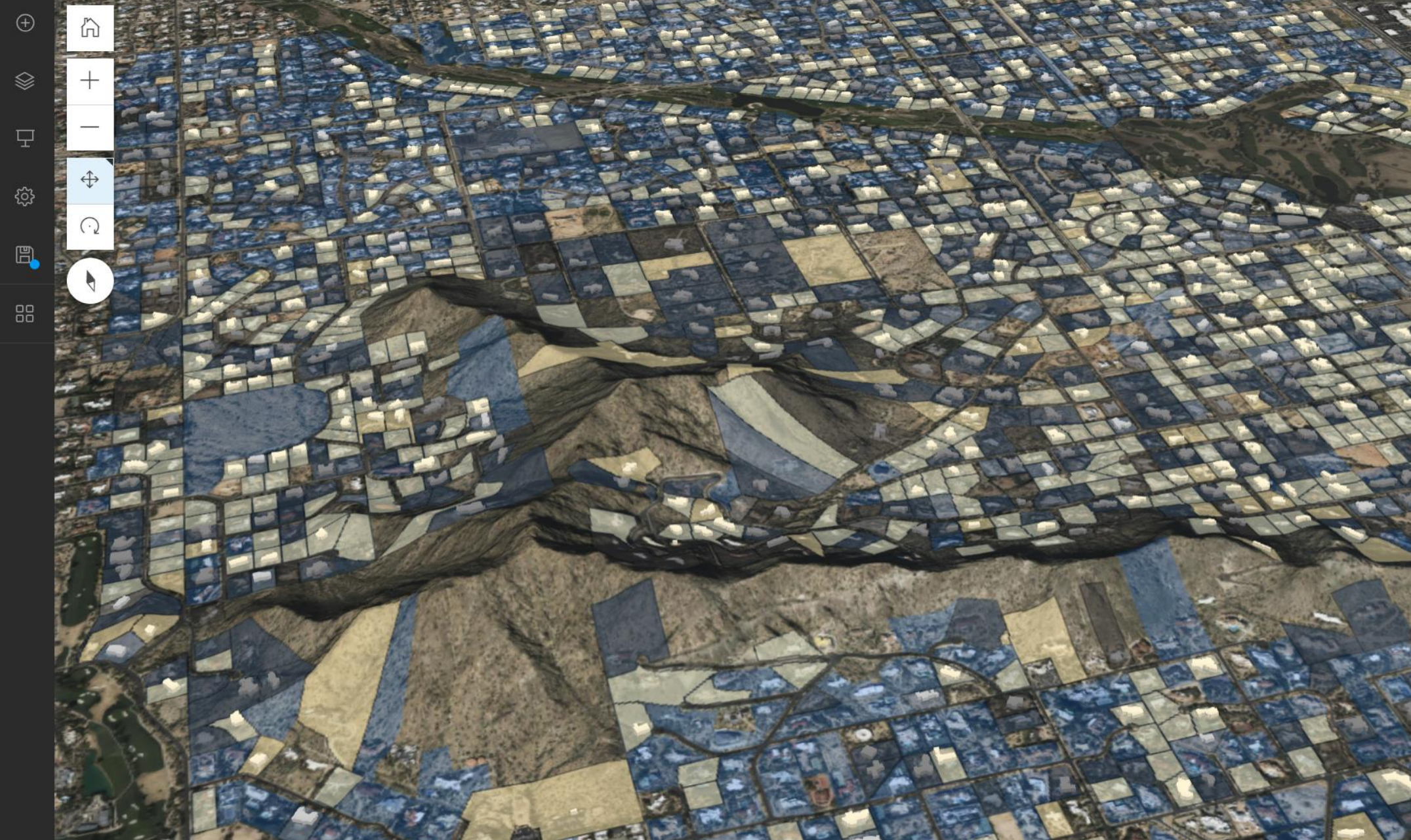
Analysis based on 12 October 2022 imagery

Defensible Space	Value
DSB 5 ft	0%
DSB 30 ft	0%
DSB 100 ft	13%
DSB 200 ft	14%
DST 5 ft	9%
DST 30 ft	9%
DST 100 ft	11%
DST 200 FT	12%

Defensible Space Building: DSB

Defensible Space Trees: DST

Metrics above relate to 5, 10, 30 100, and 200 foot buffers for both buildings and trees; ex: 24% of the 100 foot buffer contains other buildings



Building Change

-  none
-  minor
-  major

Parcel Change




-  None
-  None
-  Minor
-  Major

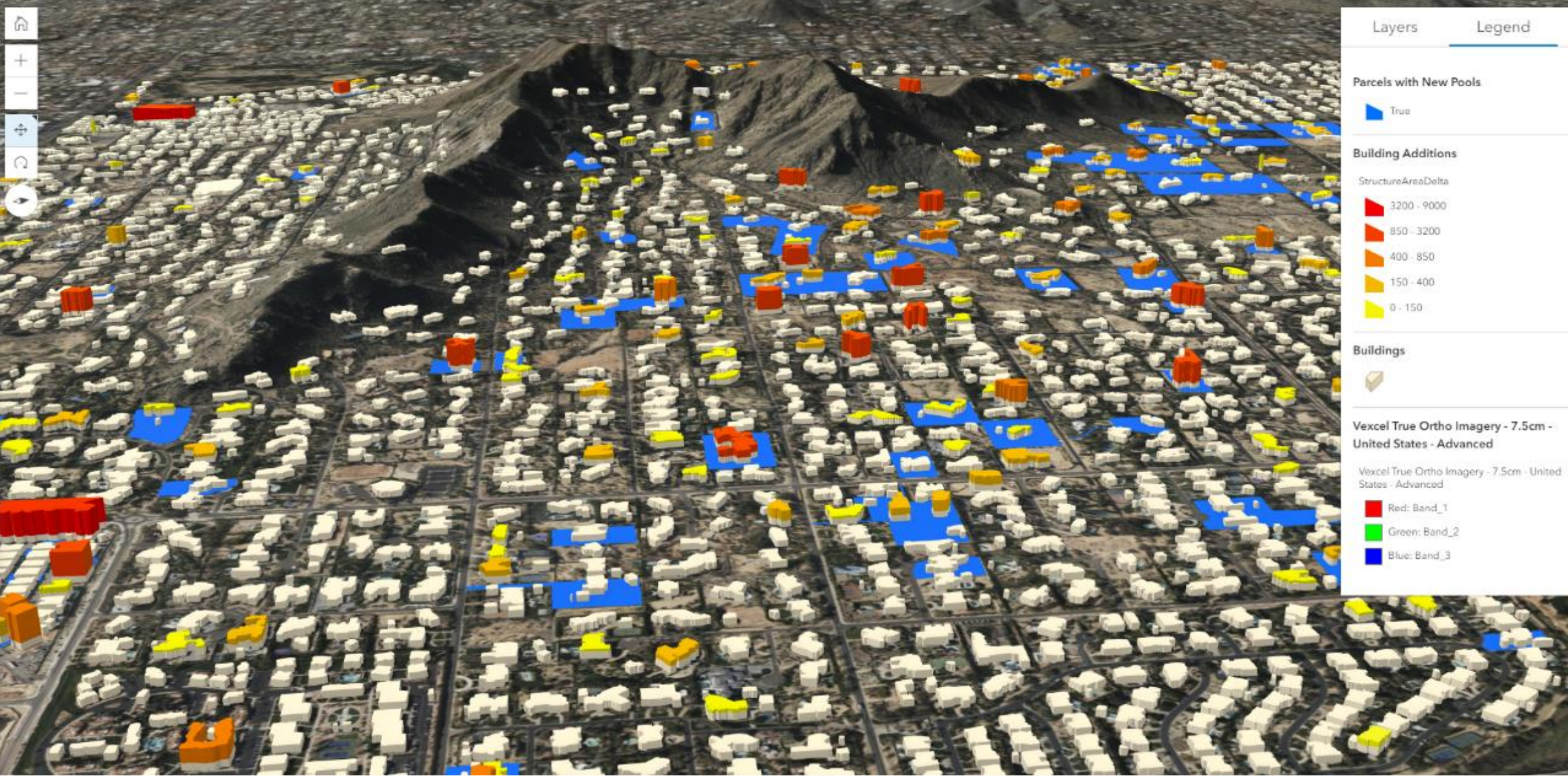
Parcels with Pools

-  True

Vexcel True Ortho Imagery - 7.5cm United States - Advanced

Vexcel True Ortho Imagery - 7.5cm United States - Advanced

-  Red: Band_1
-  Green: Band_2
-  Blue: Band_3



Layers Legend

Parcels with New Pools

- True

Building Additions

StructureAreaDelta

- 3200 - 9000
- 850 - 3200
- 400 - 850
- 150 - 400
- 0 - 150

Buildings

Vexcel True Ortho Imagery - 7.5cm - United States - Advanced

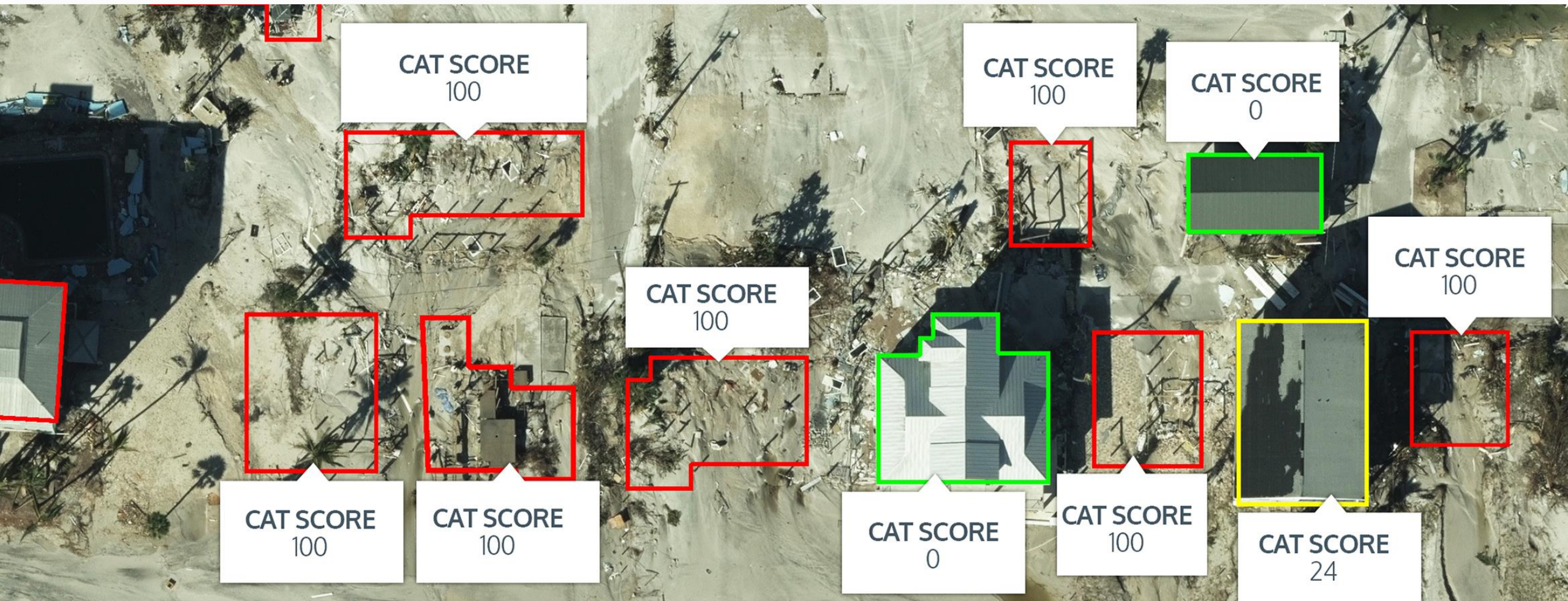
Vexcel True Ortho Imagery - 7.5cm - United States - Advanced

- Red: Band_1
- Green: Band_2
- Blue: Band_3



Damage Assessment for 3.6 Million Buildings

- Automatically generated catastrophe analytics on freshly captured disaster event imagery





Lahaina, Hawaii

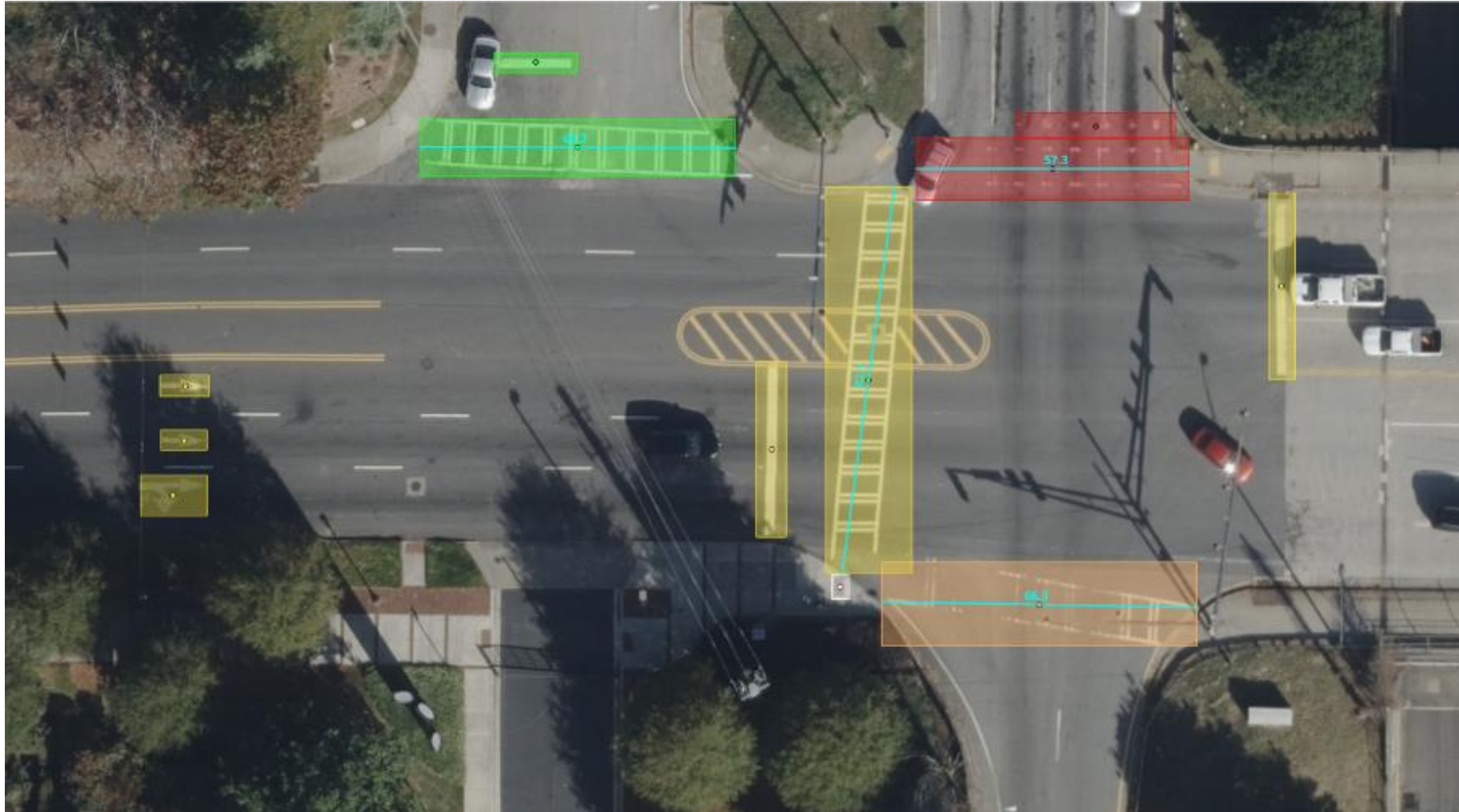
Damage Assessment

Our AI analysis identified a total of 2,760 structures within our Lahaina collection area.

- **1,718 structures were completely destroyed**; 62% of all the structures in the collection area
- **363 structures had slight to moderate damage**, ranging from some fire damage to missing shingles possibly caused from the severe winds that fanned the fires.
- **678 structures had no damage identified** in the imagery



Feature Extractions: Roadway Elements



Pavement Markings

- Crosswalks
- Bicycle symbols
- Arrows
- Words
- Available for current and historical imagery

Infrastructure

- Pedestrian refuge islands
- ADA truncated domes “curb mats”
- Intersection-junctions
- Available for current and historical imagery

Condition Assessment

- Pavement marking quality score for prioritizing maintenance
- Available for current and historical imagery

Digitizing Transportation Infrastructure for...

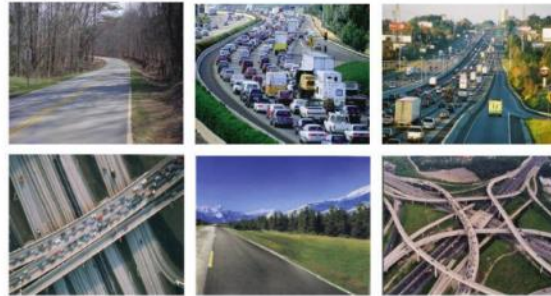
BIPARTISAN
INFRASTRUCTURE
LAW

Safe Streets and Roads for All



Highway Performance Monitoring System

Field Manual



Office of Highway Policy Information

December 2016

Office of Management & Budget (OMB) Control No. 2125-0028

MIRE Data Collection Guidebook



MIRE
MODEL INVENTORY OF ROADWAY ELEMENTS

FHWA Safety Program



<http://safety.fhwa.dot.gov>

SEPTEMBER 2014



ALL PUBLIC
ROADS GEOSPATIAL
REPRESENTATION STUDY

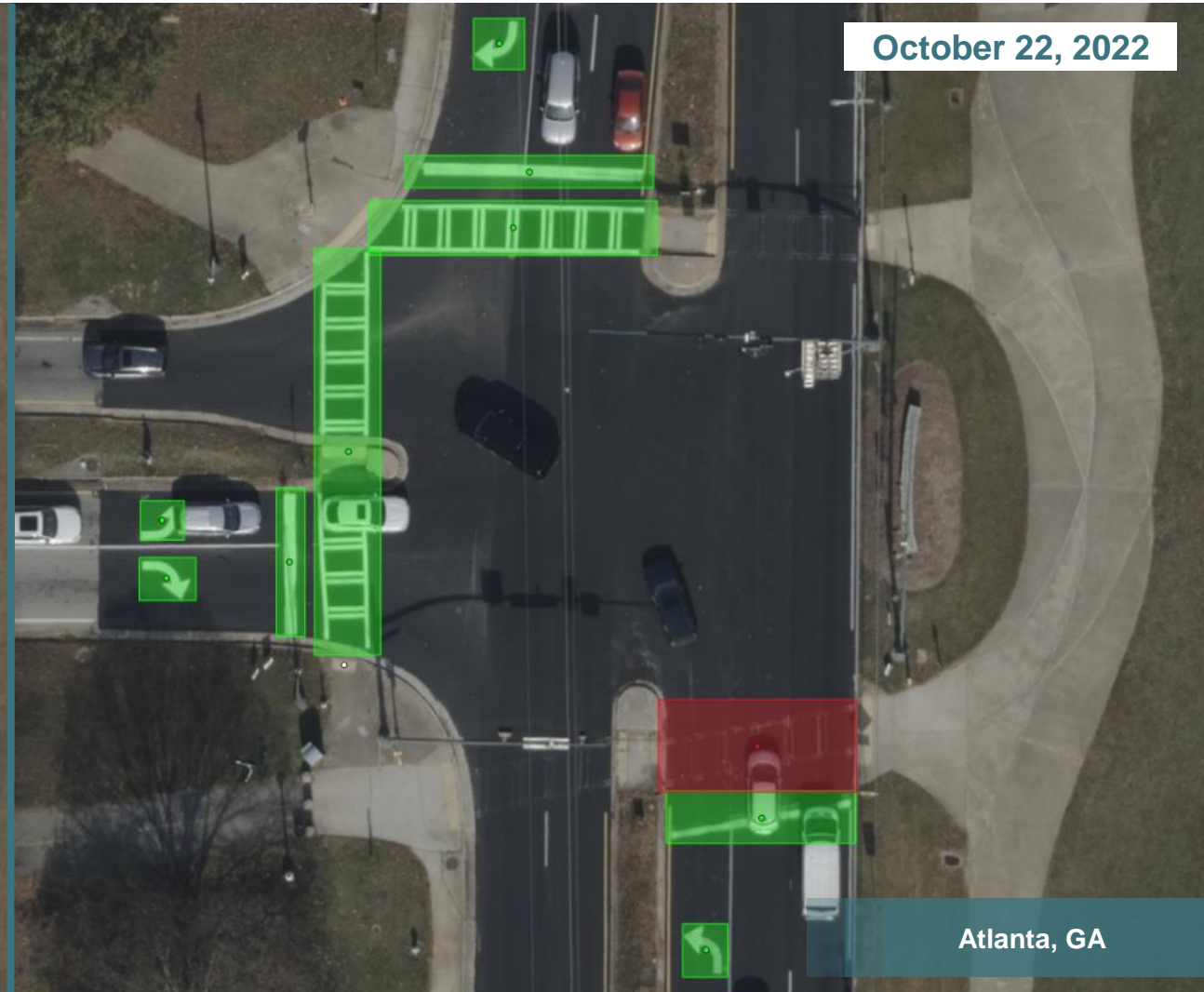
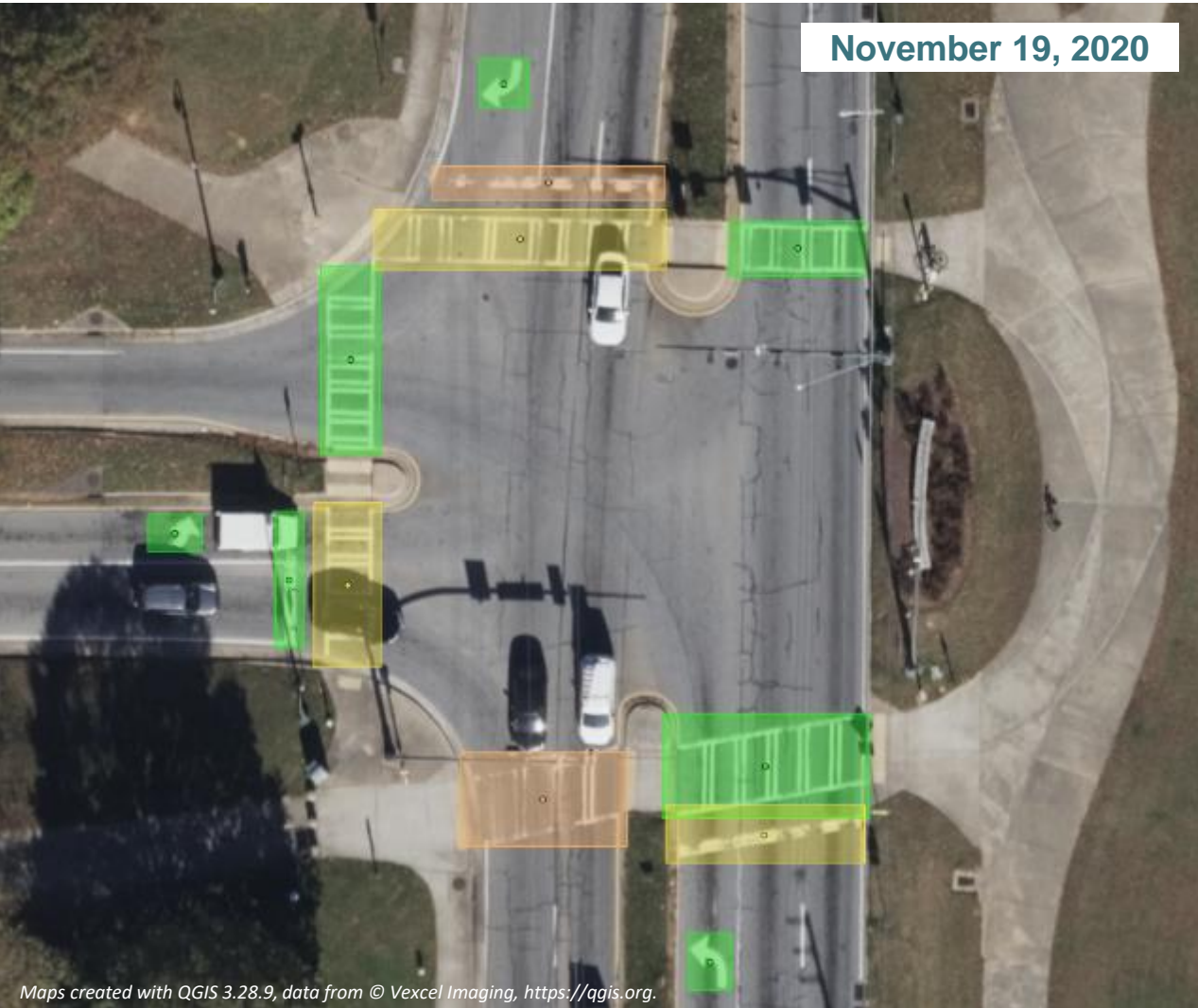


ALL ROAD NETWORK OF LINEAR REFERENCED DATA

ARNOLD Reference Manual



AI/ML Object Detection and Classification





Safety Benefits:

High-visibility crosswalks
can reduce pedestrian injury
crashes up to:

40%¹

Intersection lighting can
reduce pedestrian crashes
up to:

42%²

Advance yield or stop
markings and signs can
reduce pedestrian
crashes up to:

25%³



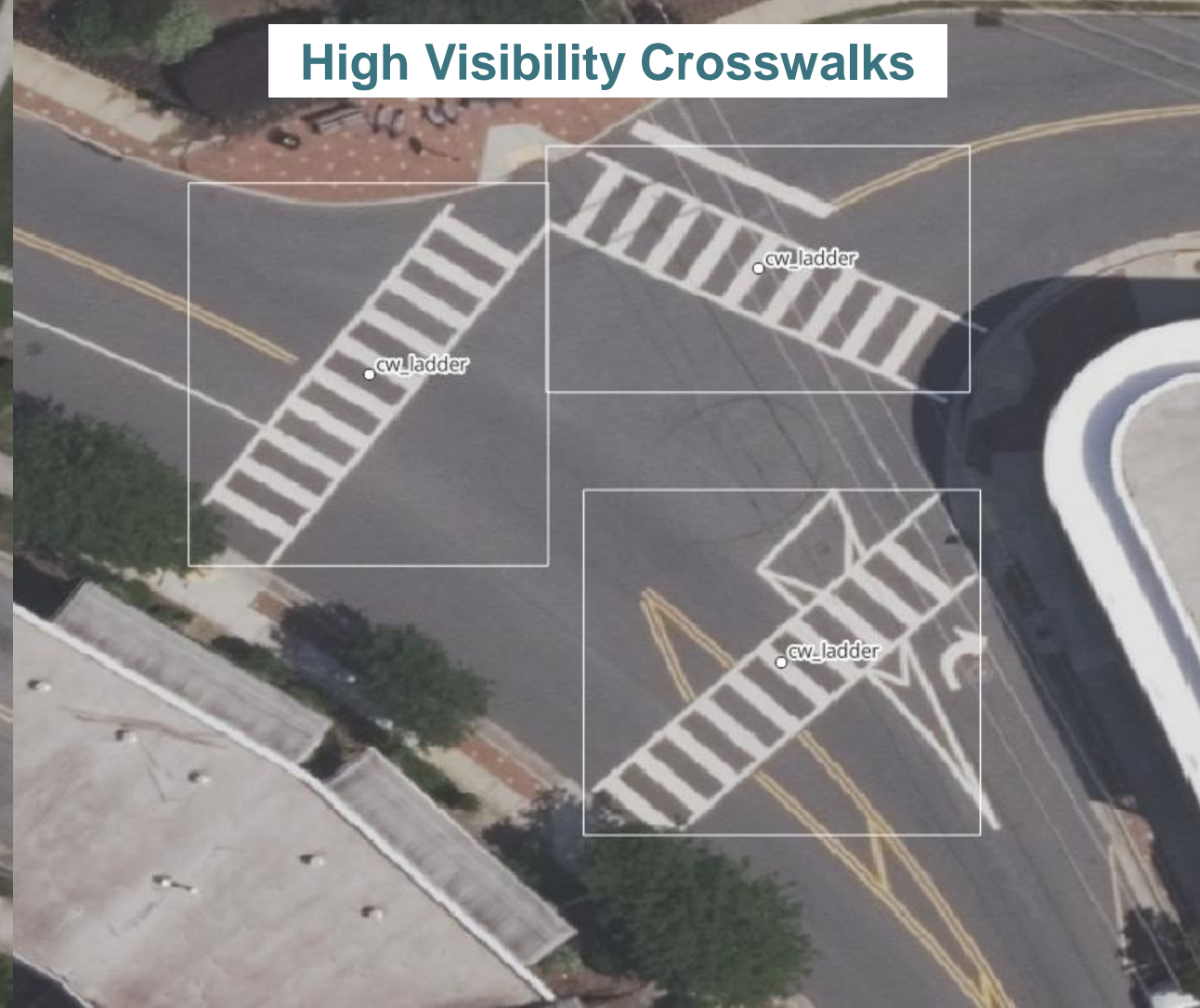
U.S. Department of Transportation
**Federal Highway
Administration**

Crosswalk Compliance Assessment: Low vs. High Visibility

Standard Crosswalks



High Visibility Crosswalks

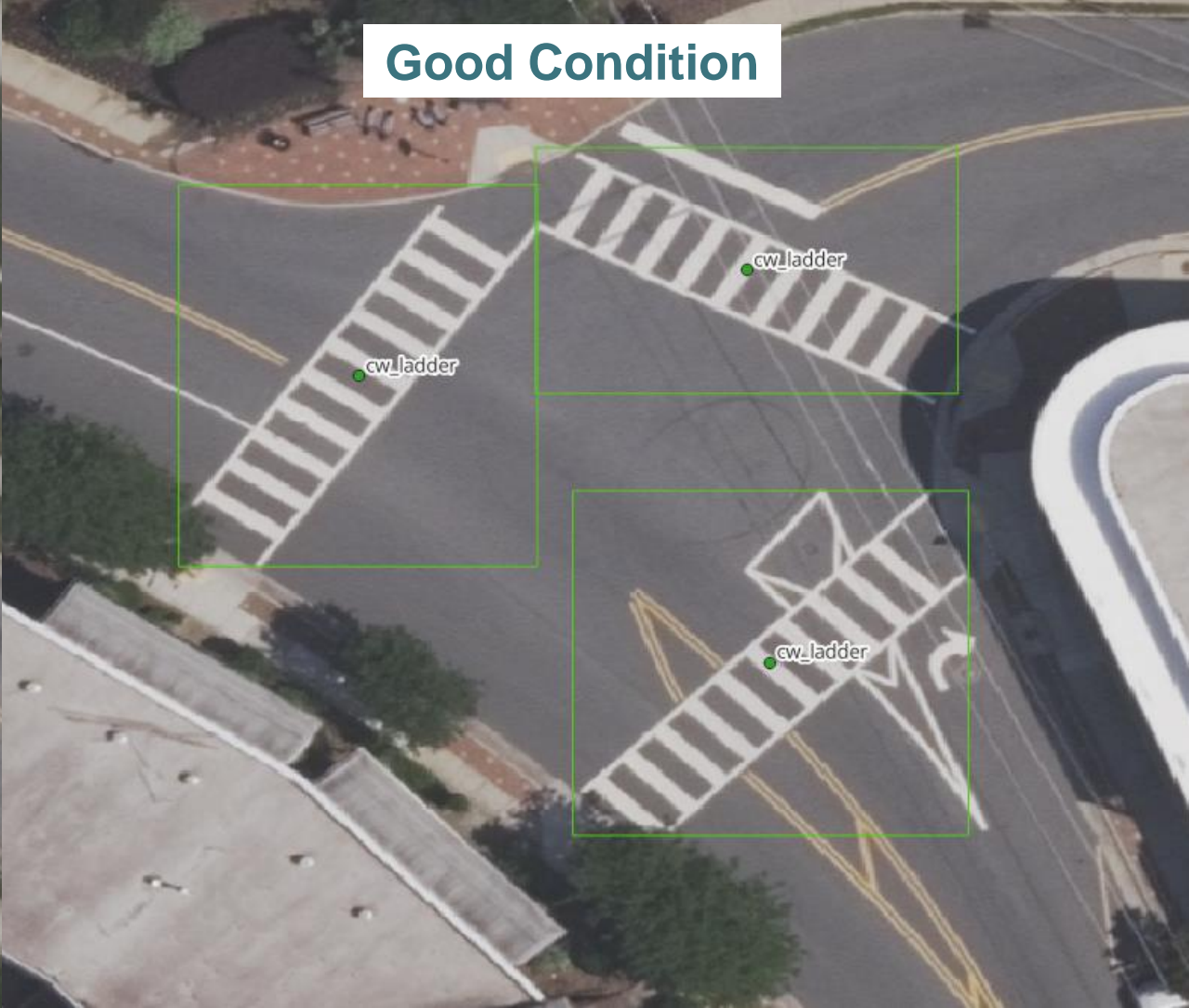


Crosswalk Condition Assessment

Poor Condition



Good Condition



Pavement Condition Scoring



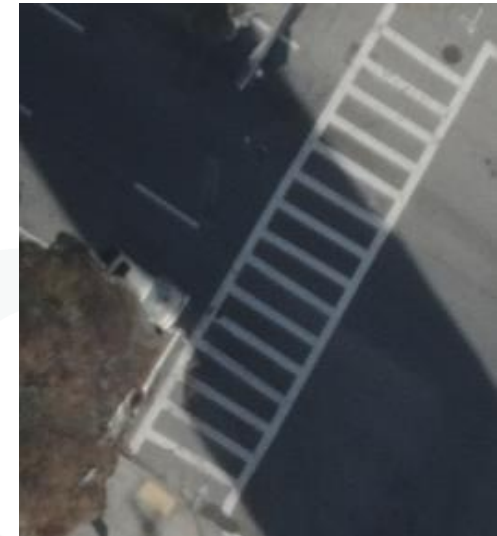
Poor: 1



Fair: 2



Good: 3



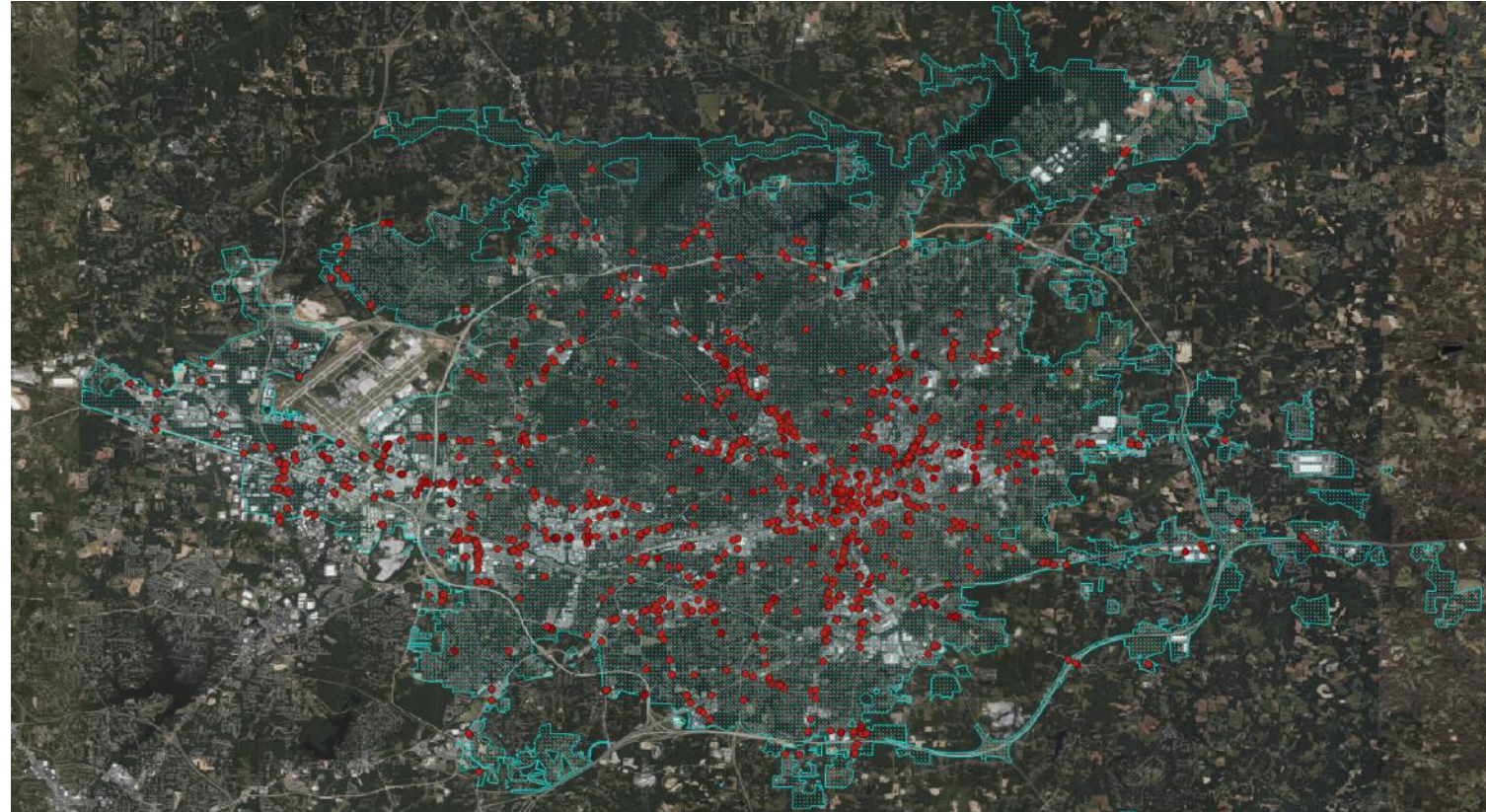
Great: 4

Scored between 1-4 based on pavement marking imagery classified using subjective condition assessment markings.

- 4 = Great. No visible signs of defects.
- 3 = Good. Minimal signs of defects.
- 2 = Fair. Pronounced signs of defects that affect the function of the marking.
- 1 = Poor. Pronounced signs of defects that significantly affect the function of the marking.

Maintenance Planning – Pavement Markings

Item (Tag)	Count	Poor Condition Count	Replacement Cost (Materials)
stopbar	4235	333	32967
straight_arrow	3848	528	78672
leftturn_arrow	5569	154	26180
rightturn_arrow	1870	81	13770
cw_diagonal	123	3	3000
cw_ladder	396	37	37000
cw_zebra	100	3	3000
handicap_symbol	856	0	0
straightleft_arrow	198	8	2592
cw_solid	219	11	8250
cw_standard	1349	196	88200
leftright_arrow	33	5	850
ONLY_text	419	39	10998
STOP_text	122	10	2550
straightright_arrow	522	37	11988
bikesymbol	459	0	0
merge_arrow	299	8	3696
AHEAD_text	7	0	0
allway_arrow	15	1	447
BUS_text	4	0	0
LANE_text	2	0	0
PED_text	1	0	0
RXR	120	17	8364
SCHOOL_text	138	18	6480
sharedlanebike	122	0	0
SIGNAL_text	2	0	0
text_other	28	1	200
uturn_arrow	12	0	0
XING_text	2	0	0
YIELD_text	6	2	558
Yieldbar	30	3	169.5
	21160	1495	\$339,932



Poor condition road markings with quality score of 1 within city limits. Model version 06/07/23



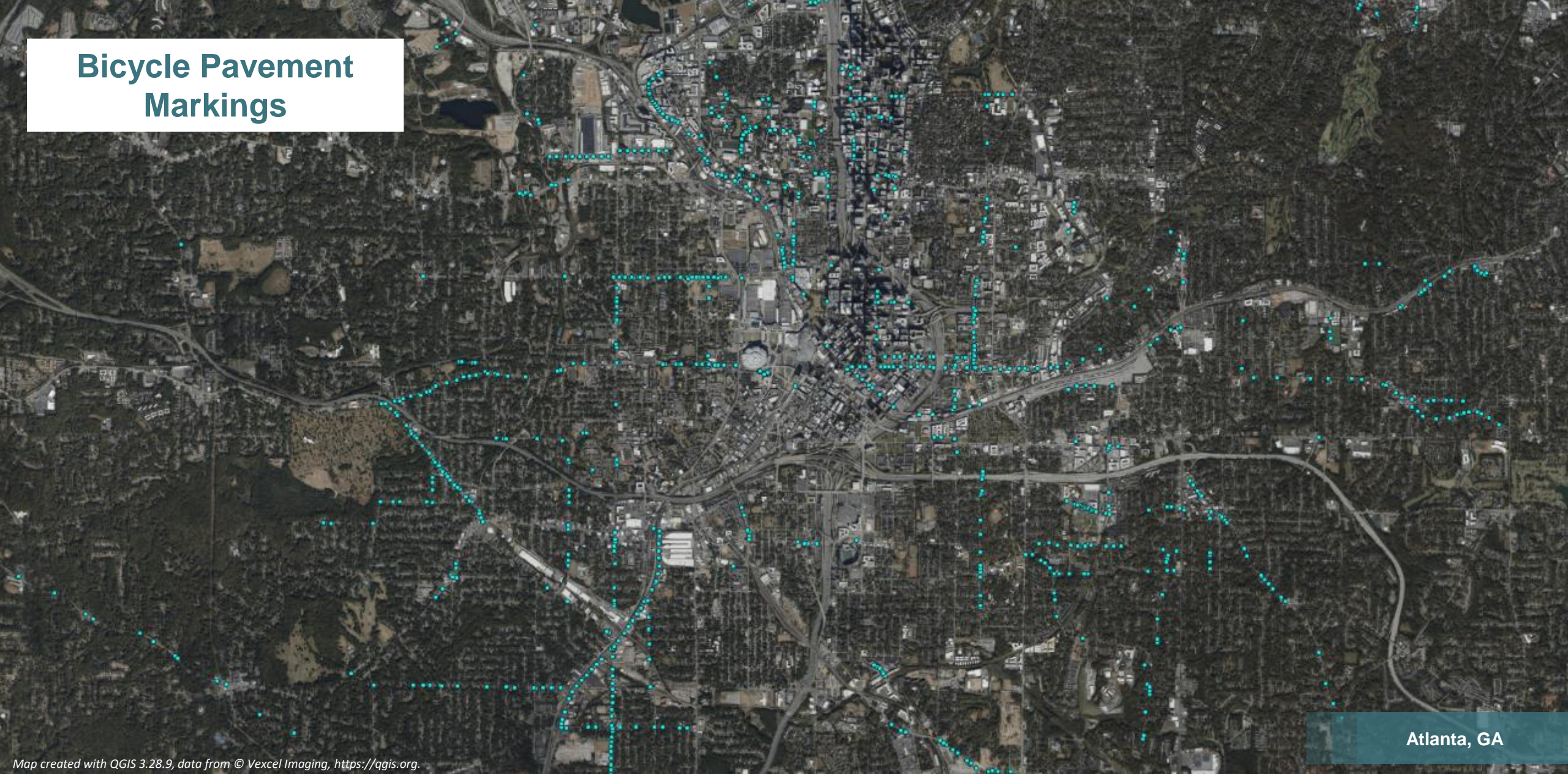
VEXCEL
DATA PROGRAM

Pedestrian and Bicycle Markings



Atlanta, GA

Bicycle Pavement Markings

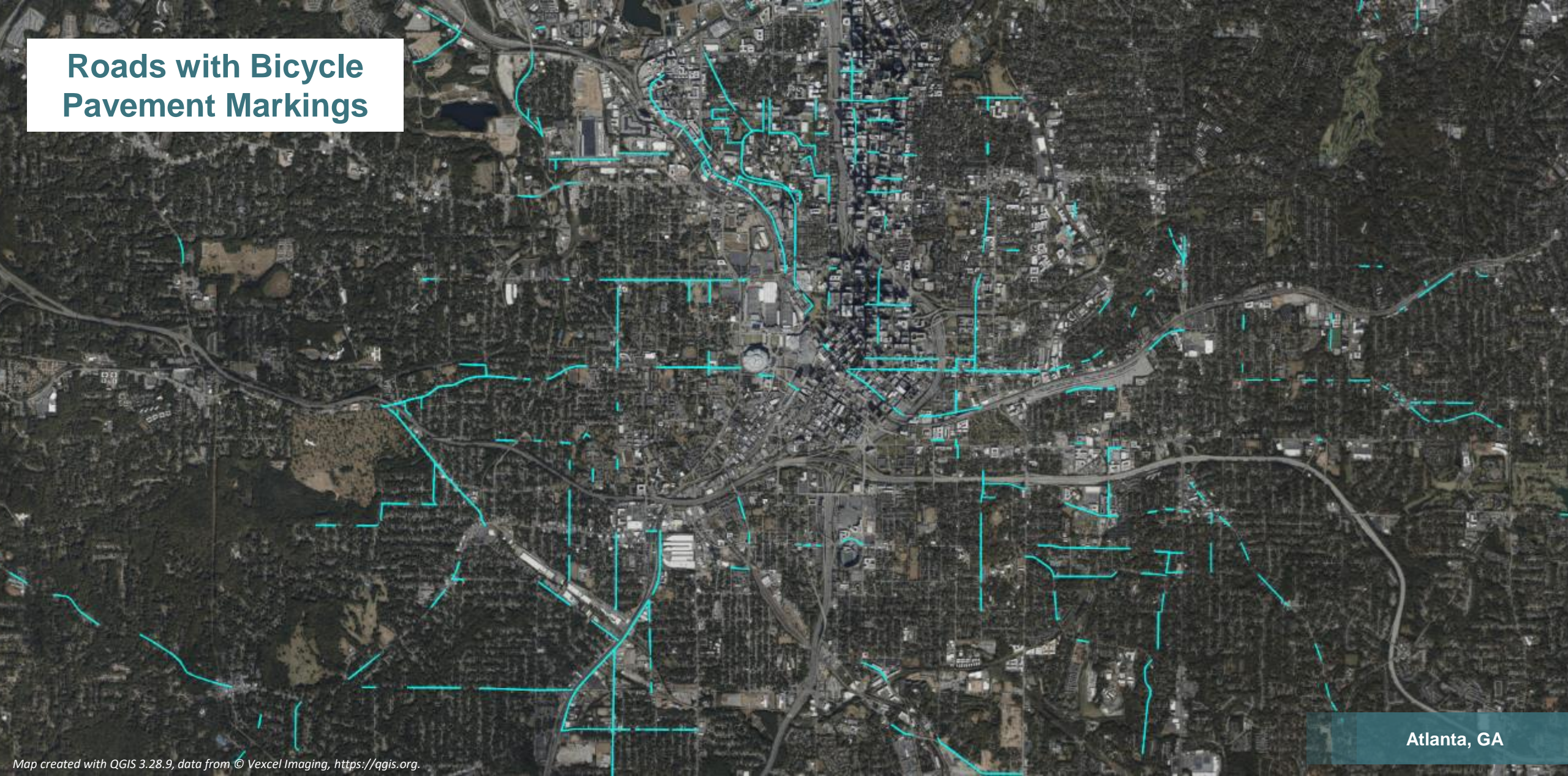


Atlanta, GA

Map created with QGIS 3.28.9, data from © Vexcel Imaging, <https://qgis.org>.



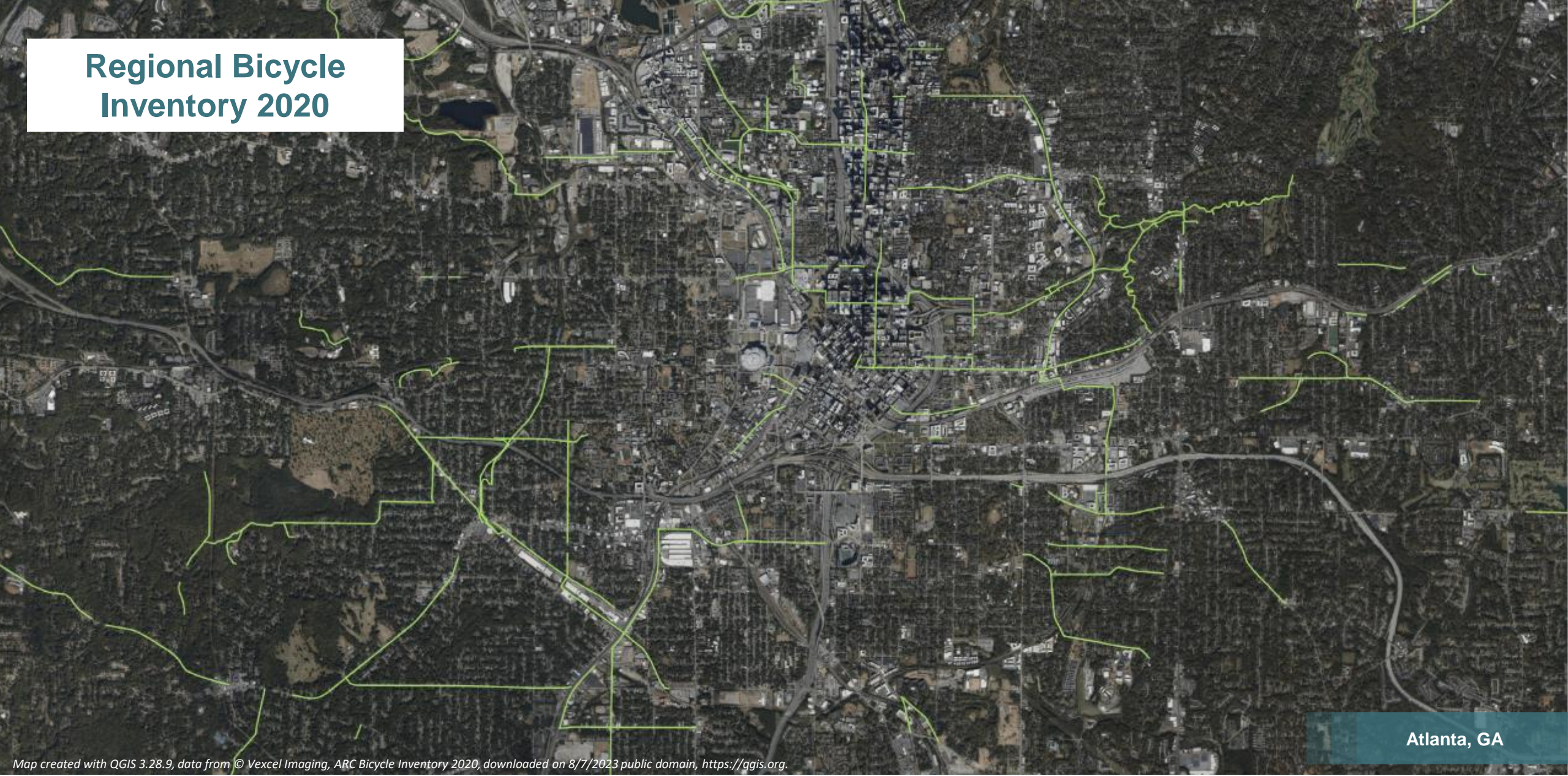
Roads with Bicycle Pavement Markings



Atlanta, GA

Map created with QGIS 3.28.9, data from © Vexcel Imaging, <https://qgis.org>.

Regional Bicycle Inventory 2020



Atlanta, GA

Map created with QGIS 3.28.9, data from © Vexcel Imaging, ARC Bicycle Inventory 2020, downloaded on 8/7/2023 public domain, <https://qgis.org>.

Comparison: Roads with Bicycle Markings 2022 and 2020 Inventory

- 2022 AI-based inventory
- 2020 Regional Inventory

Atlanta, GA

Map created with QGIS 3.28.9, data from © Vexcel Imaging, ARC Bicycle Inventory 2020, downloaded on 8/7/2023 public domain, <https://qgis.org>.

Roadway Data from High-Resolution Aerial Imagery

1. Roadway Inventories for Bike and Pedestrian Facilities

- Crosswalks (standard and high visibility) at intersections and midblock
- Bicycle lanes (symbols, words and green painted lanes)
- ADA detectable curb mats (truncated dome) and pedestrian refuge islands

2. Roadway Inventories for intersections and approaches

- Exclusive Left-turn and Right-turn lanes
- Presence/Absence of crosswalks
- Presence/Absence of bicycle facilities

3. Condition Assessment of Road Markings for Maintenance Prioritization

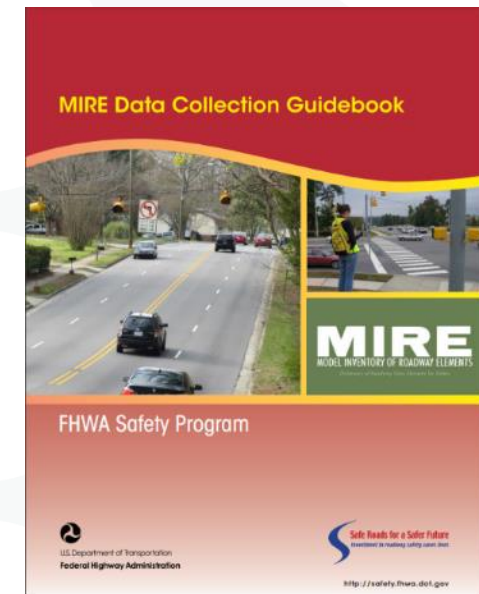
- Identification of faded or worn pavement markings
- Development of predication models based on historic imagery

4. ADA Compliance Assessment

- Mapping of required detectable warnings on curb ramps per DOT ADA standards

5. Confirm and Document Installation of Countermeasures

- Creation of as-builts for FHWA proven Pedestrian/Bicyclist countermeasures¹ (e.g., high-visibility crosswalks, advance stop and yield lines, ped. refuge islands).



Statewide Needs

High value source imagery

Mapping grade quality & accuracy

Increased savings

Buy-up options

Tiered Government & Public Access

Standard formats for easy integration

		Package Items		
		Starter Package	Standard Package	Complete Package
Rural & Urban Blue Sky	6in Wide Area Orthos	✓	✓	✓
	6in Wide Area Derived DTM/DSM			✓
	6in Wide Area Ortho Multispectral	✓	✓	✓
Urban Blue Sky	3in Urban TrueOrthos	✓	✓	✓
	3in Urban Obliques	✓	✓	✓
	3in Urban Ortho	✓	✓	✓
	3in Derived DSM			✓
	3in Urban TrueOrtho Multispectral	✓	✓	✓
	3in Urban Ortho Multispectral	✓	✓	✓
Disaster/ CAT Events Gray Sky	Gray Sky Imagery	✓	✓	✓
	Post disaster property analytics		✓	✓
Elements AI/ML based feature extractions	Building Footprints w/ sq. footage & pools		✓	✓
	Building Attributes			✓
	Property Attributes			✓
	Roadway Attributes			✓
Services, Archives & Data Rights	Historical Data Library	✓	✓	✓
	Connectors (ESRI, WMTS, Map Controls, APIs, Viewer)	✓	✓	✓
	Data viewable in public website views & Government Tier Access	✓	✓	✓
	Professional Services—Vexcel Advocacy	✓	✓	✓

In summary



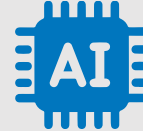
Hi-Res
Aerials



30+
Countries



Post-CAT
Imagery



Optimized
for AI



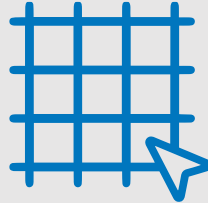
Damage
Assessment



Elevation
Data



Property
Attributes



Unmatched
Accuracy



Flexible
Memberships



Building
Attributes



Support
Across
Property Life
Cycle



API & GIS
Integrations



Top-Class
Support



Partner
Network



Urban +
Rural Areas